

STRYA EIGHT DEPARTURE (RNAV)

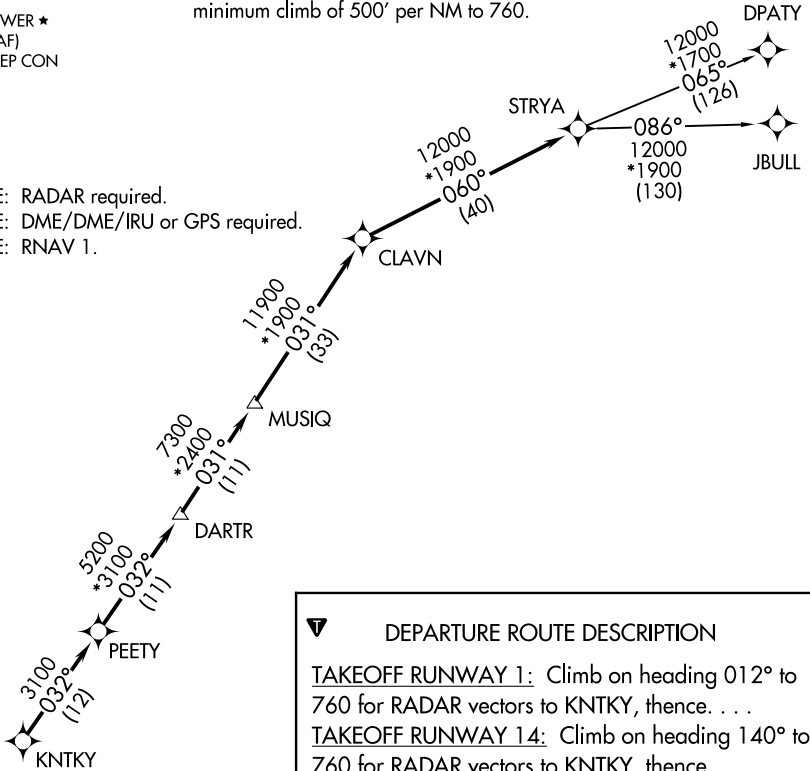
TOP ALTITUDE: ASSIGNED BY ATC

ATIS
118.325
CLNC DEL
120.45
CLNC DEL
119.55 (when twr closed)
GND CON
120.45
CONROE TOWER ★
124.125 (CTAF)
HOUSTON DEP CON
119.7 281.4

TAKEOFF MINIMUMS

Rwys 1, 14, 19, 32: Standard with
minimum climb of 500' per NM to 760.

NOTE: RADAR required.
NOTE: DME/DME/IRU or GPS required.
NOTE: RNAV 1.



DEPARTURE ROUTE DESCRIPTION

TAKEOFF RUNWAY 1: Climb on heading 012° to 760 for RADAR vectors to KNTKY, thence. . .

TAKEOFF RUNWAY 14: Climb on heading 140° to 760 for RADAR vectors to KNTKY, thence. . .

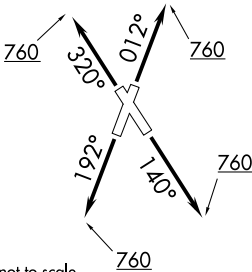
TAKEOFF RUNWAY 19: Climb on heading 192° to 760 for RADAR vectors to KNTKY, thence. . .

TAKEOFF RUNWAY 32: Climb on heading 320° to 760 for RADAR vectors to KNTKY, thence. . .

. . . on track 032° to PEETY, then on track 032° to DARTR, then on track 031° to MUSIQ, then on track 031° to CLAVN, then on track 060° to STRYA, then on (transition). Maintain ATC assigned altitude. Expect filed altitude 10 minutes after departure.

DPATY TRANSITION (STRYA8.DPATY)

JBULL TRANSITION (STRYA8.JBULL)



NOTE: Chart not to scale.

STRYA EIGHT DEPARTURE (RNAV)

SC-5, 26 DEC 2024 to 23 JAN 2025

SC-5, 26 DEC 2024 to 23 JAN 2025