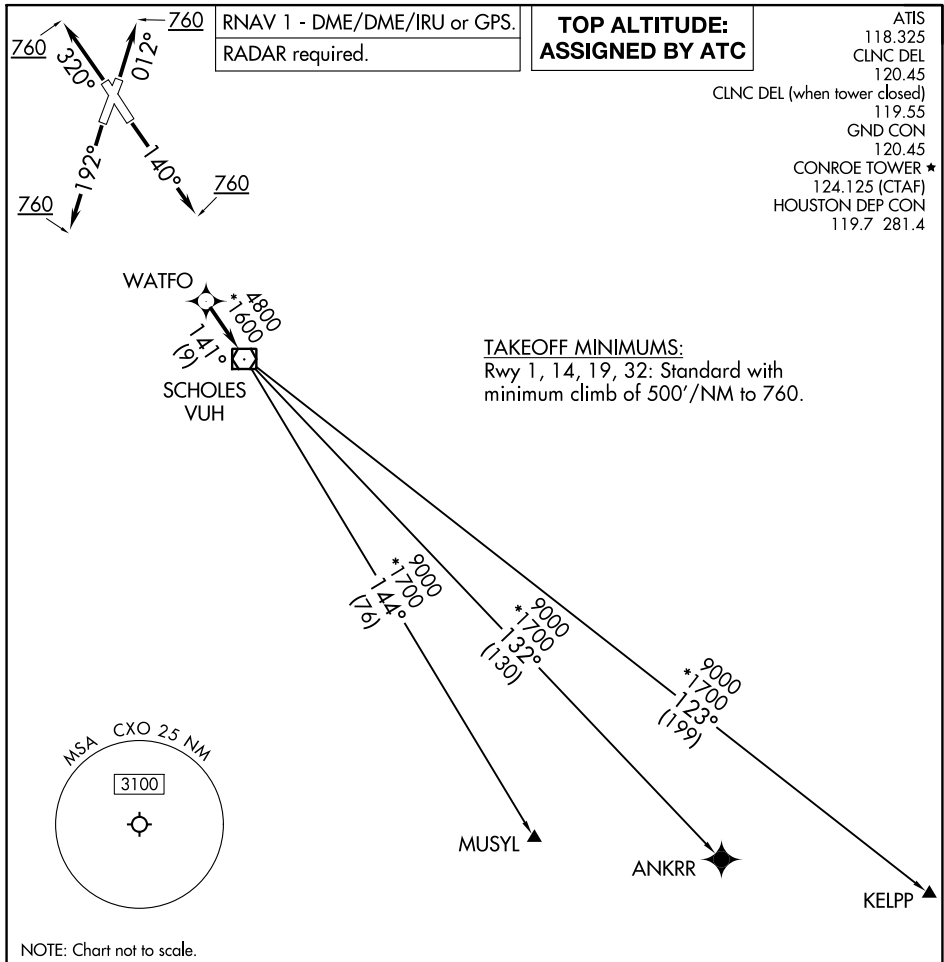


(WATFO6.WATFO) 23222

AL-5573 (FAA)

CONROE/NORTH HOUSTON RGNL (CXO)
HOUSTON, TEXAS

WATFO SIX DEPARTURE (RNAV)



SC-5, 26 DEC 2024 to 23 JAN 2025

SC-5, 26 DEC 2024 to 23 JAN 2025



DEPARTURE ROUTE DESCRIPTION

TAKEOFF RUNWAY 1: Climb on heading 012° to 760, for RADAR vectors to WATFO, thence. . . .

TAKEOFF RUNWAY 14: Climb on heading 140° to 760, for RADAR vectors to WATFO, thence. . . .

TAKEOFF RUNWAY 19: Climb on heading 192° to 760, for RADAR vectors to WATFO, thence. . . .

TAKEOFF RUNWAY 32: Climb on heading 320° to 760, for RADAR vectors to WATFO, thence. . . .

. . . on track 141° to VUH VOR/DME, then on (transition). Maintain ATC assigned altitude.
Expect filed altitude 10 minutes after departure.

- ANKRR TRANSITION (WATFO6.ANKRR)
- KELPP TRANSITION (WATFO6.KELPP)
- MUSYL TRANSITION (WATFO6.MUSYL)

WATFO SIX DEPARTURE (RNAV)
(WATFO6.WATFO) 10AUG23

HOUSTON, TEXAS
CONROE/NORTH HOUSTON RGNL (CXO)