

WAAS CH <b>81906</b> <b>W16A</b>	APP CRS <b>166°</b>	Rwy Idg TDZE Apt Elev	<b>5201</b> <b>3432</b> <b>3459</b>
----------------------------------------	------------------------	-----------------------------	-------------------------------------------

# RNAV (GPS) Z RWY 16

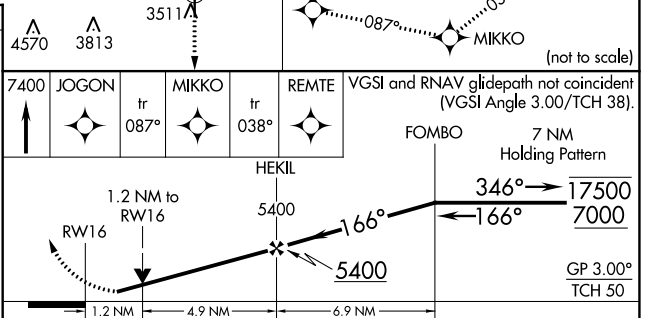
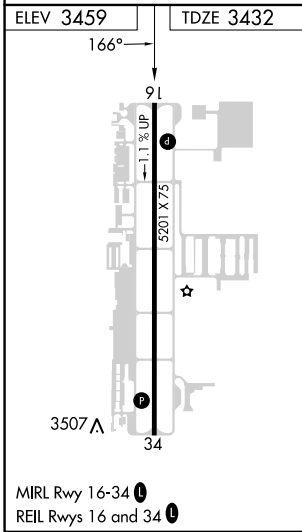
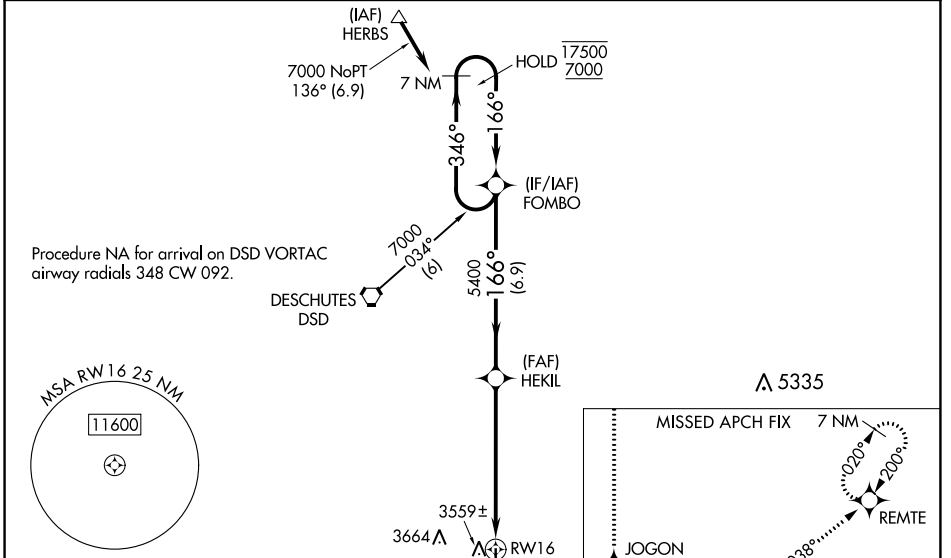
BEND MUNI (BDN)

RNP APCH - GPS.

**⚠** Baro-VNAV and VDP NA when using Redmond altimeter setting. Rwy 16 helicopter visibility reduction below  $\frac{3}{4}$  SM NA. For uncompensated Baro-VNAV systems, LNAV/VNAV NA below -21°C or above 54°C. When local altimeter setting not received, use Redmond altimeter setting: increase LPV DA to 3763 feet and all visibilities  $\frac{1}{4}$  SM; increase LNAV/VNAV DA to 3821 feet and all visibilities  $\frac{1}{4}$  SM; increase all MDAs 100 feet and LNAV visibility Cats C and D  $\frac{1}{4}$  SM, and Circling visibility Cat C  $\frac{1}{2}$  SM.

**MISSED APPROACH:** Climb to 7400 direct JOGON and on track 087° to MIKKO and on track 038° to REMTE and hold, continue climb-in-hold to 7400.

AWOS-3 <b>134.425</b>	SEATTLE CENTER <b>126.15 269.475</b>	UNICOM <b>123.0 (CTAF)</b>
--------------------------	-----------------------------------------	-------------------------------



CATEGORY	A	B	C	D
LPV DA		3682- $\frac{3}{4}$	250 (300- $\frac{3}{4}$ )	
LNAV/VNAV DA		3740- $\frac{7}{8}$	308 (300- $\frac{7}{8}$ )	
LNAV MDA	3820-1	388 (400-1)	3820-1 $\frac{1}{8}$	388 (400-1 $\frac{1}{8}$ )
<b>C</b> CIRCLING	3960-1 501 (600-1)	3980-1 521 (600-1)	4120-1 $\frac{3}{4}$ 661 (700-1 $\frac{3}{4}$ )	4640-3 1181 (1200-3)

NW-1, 26 DEC 2024 to 23 JAN 2025

NW-1, 26 DEC 2024 to 23 JAN 2025