

VOR/DME OAB <b>109.8</b> Chan <b>35</b>	APP CRS <b>118°</b>	Rwy Idg TDZE Apt Elev <b>4579</b>	<b>N/A</b> <b>N/A</b> <b>4579</b>
---	------------------------	--------------------------------------	---

# VOR-A

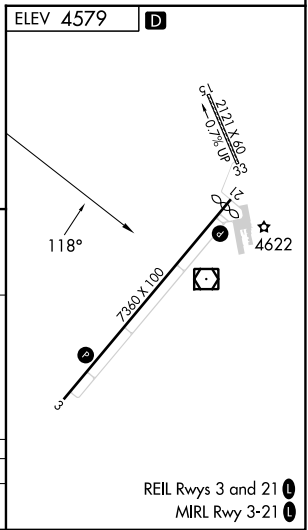
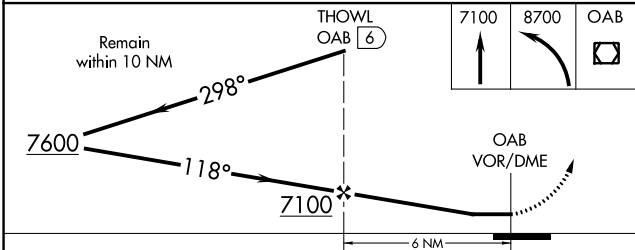
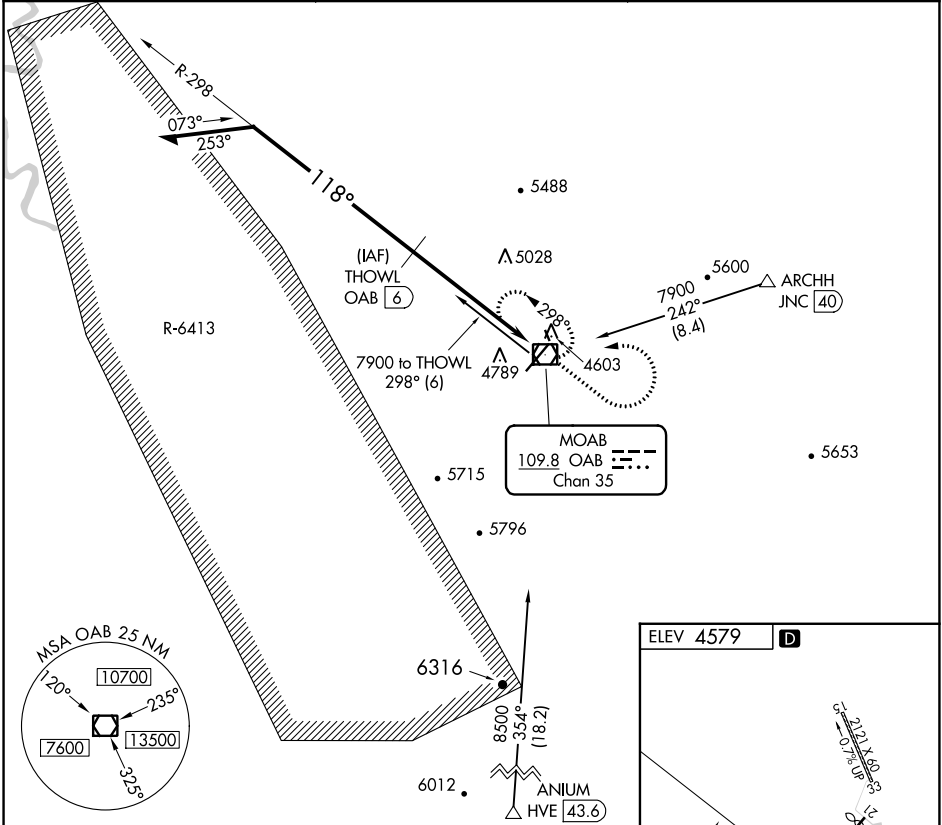
CANYONLANDS RGNL (CNY)

DME required.

**▼** Circling NA to Rwys 15 and 33.  
**▲** Rwy 3 helicopter visibility reduction below 3/4 SM NA.  
 Procedure NA when R-6413 in operation.

MISSED APPROACH: Climb to 7100 then climbing left turn to 8700 direct OAB VOR/DME and hold, continue climb-in-hold to 8700.

ASOS <b>118.525</b>	DENVER CENTER <b>134.5 327.8</b>	UNICOM <b>122.8 (CTAF) 0</b>
------------------------	-------------------------------------	---------------------------------



CATEGORY	A	B	C	D
<b>C</b> CIRCLING	5120-1 541 (600-1)	5200-1 621 (700-1)	5640-3 1061 (1100-3)	6220-3 1641 (1700-3)

SW-4, 26 DEC 2024 to 23 JAN 2025

SW-4, 26 DEC 2024 to 23 JAN 2025

REIL Rwys 3 and 21 0  
MIRL Rwy 3-21 0