

WAAS CH 65936 W18A	APP CRS 183°	Rwy Idg TDZE Apt Elev	4359 539 539
--	------------------------	-----------------------------	---

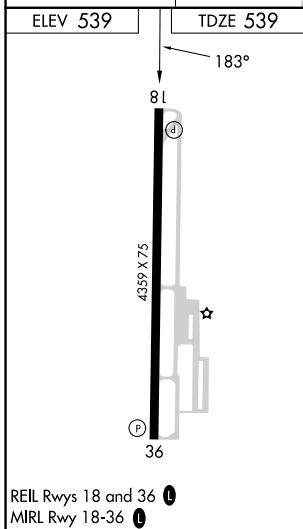
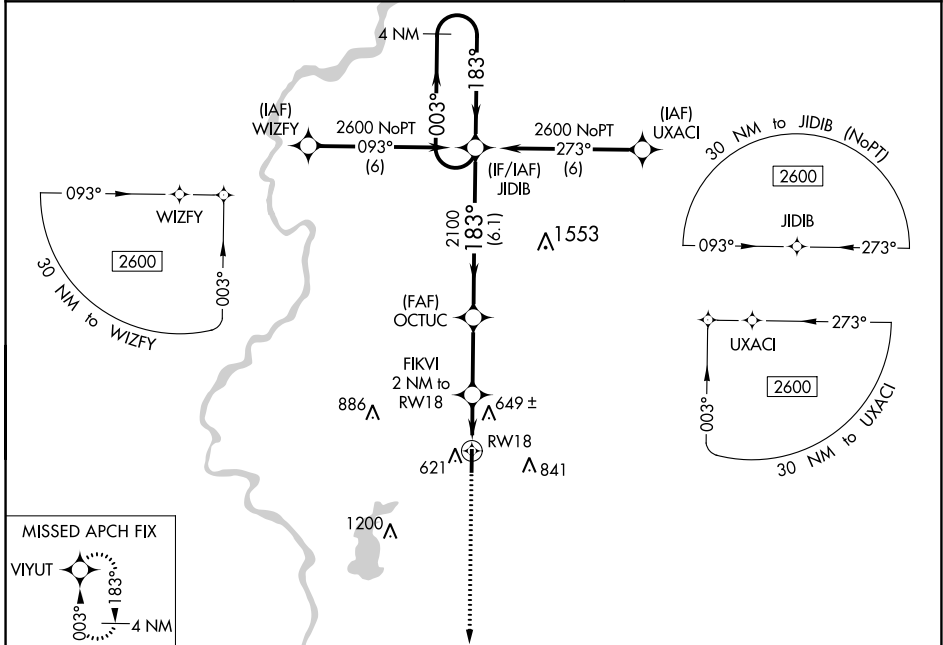
RNAV (GPS) RWY 18

SULLIVAN COUNTY (SIV)

Baro-VNAV NA. DME/DME RNP-0.3 NA. When Robinson altimeter setting is not received, use Terre Haute Intl-Hulman Field altimeter setting and increase all DA/MDA 20 feet.

MISSED APPROACH: Climb to 2500 direct VIYUT and hold.

RSV AWOS-3 120.5	HULMAN APP CON 135.35 339.8	UNICOM 122.8 (CTAF)
----------------------------	---------------------------------------	-------------------------------



ELEV 539	TDZE 539
81	183°
4359 X 75	
36	
REIL Rwy 18 and 36	
MIRL Rwy 18-36	
2500 VIYUT	VGSI and descent angles not coincident (VGSI Angle 3.00/TCH 40).
*LNAV only	4 NM Holding Pattern
FIKVI 2 NM to RW18	OCTUC 2100
RW18	JIDIB 2600
1200*	GP 3.00° TCH 40
2 NM	2.8 NM
6.1 NM	
CATEGORY	A B C D
LPV DA	826-1 287 (300-1) NA
LNAV/VNAV DA	826-1 287 (300-1) NA
LNAV MDA	940-1 401 (500-1) NA
CIRCLING	1000-1 1080-1 NA
	461 (500-1) 541 (600-1)

EC-2, 26 DEC 2024 to 23 JAN 2025

EC-2, 26 DEC 2024 to 23 JAN 2025