

(HENCE1 .HENCE) 24249

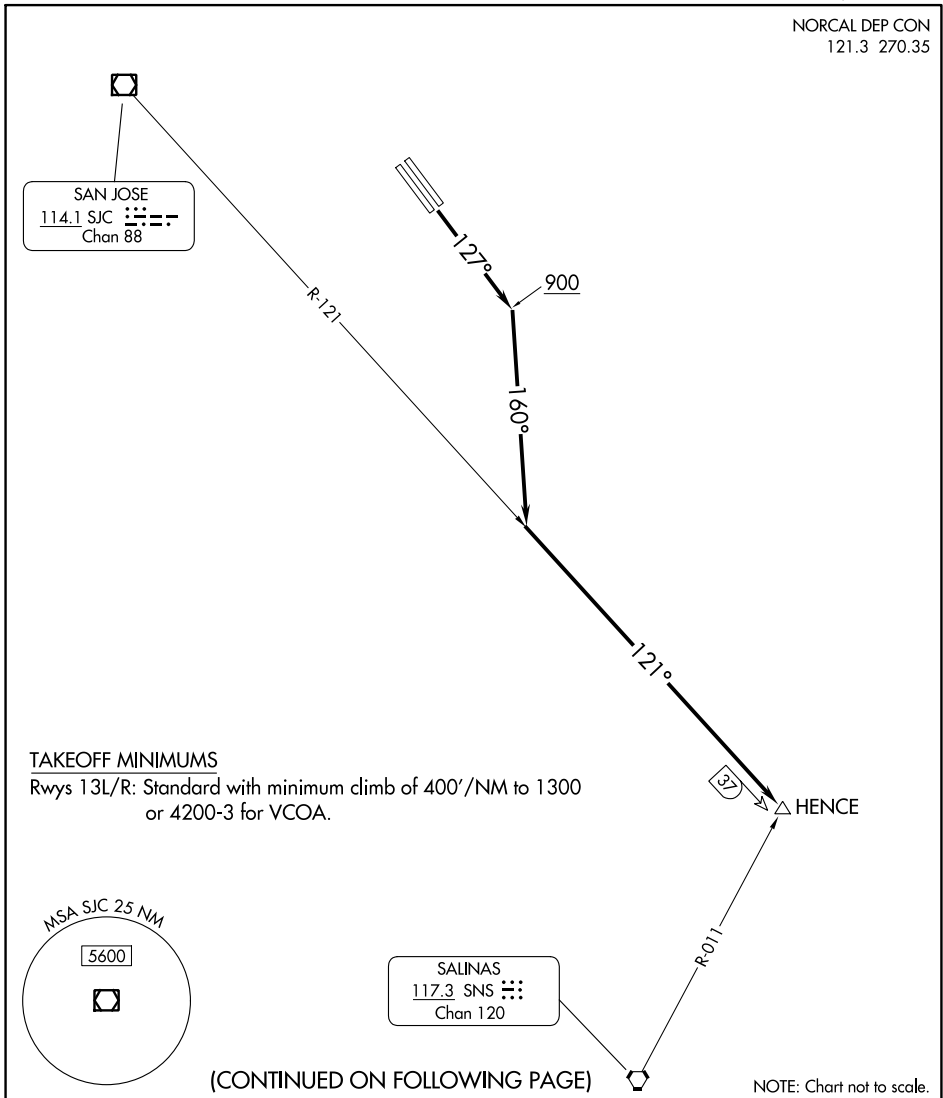
# HENCE ONE DEPARTURE (OBSTACLE)

REID-HILLVIEW OF SANTA CLARA COUNTY (R.H.V)

AL-5591 (FAA)

SAN JOSE, CALIFORNIA

NORCAL DEP CON  
121.3 270.35



### TAKEOFF MINIMUMS

Rwys 13L/R: Standard with minimum climb of 400'/NM to 1300 or 4200-3 for VCOA.

(CONTINUED ON FOLLOWING PAGE)

NOTE: Chart not to scale.

### DEPARTURE ROUTE DESCRIPTION

TAKEOFF RUNWAYS 13L/R: Climb on heading 127° to 900, then climbing right turn to heading 160° to intercept SJC VOR/DME R-121 to HENCE.

VCOA RUNWAYS 13L/R: Obtain ATC approval for VCOA when requesting IFR clearance. Climb in visual conditions to cross Reid-Hillview of Santa Clara County Airport at or above 4200 before proceeding on course.

# HENCE ONE DEPARTURE (OBSTACLE)

(HENCE1 .HENCE) 05SEP24

SAN JOSE, CALIFORNIA

REID-HILLVIEW OF SANTA CLARA COUNTY (R.H.V)

SW-2, 26 DEC 2024 to 23 JAN 2025

SW-2, 26 DEC 2024 to 23 JAN 2025

TAKEOFF OBSTACLE NOTES

Rwy 13L: Pole, vehicles on road beginning 91' from DER, 30' left of centerline, up to 39' AGL/174' MSL.  
 Fence 145' from DER, 292' right of centerline, 4' AGL/140' MSL.  
 Pole, fence beginning 162' from DER, 100' right of centerline, up to 10' AGL/147' MSL.  
 Vehicles on road beginning 176' from DER, 5' right of centerline, up to 151' MSL.  
 Pole 253' from DER, 297' left of centerline, 39' AGL/175' MSL.  
 Vehicle on road 253' from DER, 333' right of centerline, 15' AGL/155' MSL.  
 Pole 383' from DER, 22' right of centerline, 21' AGL/156' MSL.  
 Pole 617' from DER, 438' right of centerline, 20' AGL/158' MSL.  
 Trees, transmission line, pole, building beginning 652' from DER, 238' left of centerline, up to 241' MSL.  
 Tree 659' from DER, 147' right of centerline, 166' MSL.  
 Tree 709' from DER, 269' right of centerline, 168' MSL.  
 Trees, electrical system beginning 859' from DER, 460' right of centerline, up to 183' MSL.  
 Tree, electrical system beginning 1151' from DER, 107' right of centerline, up to 193' MSL.  
 Building 1364' from DER, 421' right of centerline, 198' MSL.  
 Tree, building beginning 1420' from DER, 375' right of centerline, up to 217' MSL.  
 Trees, poles beginning 2204' from DER, 40' right of centerline, up to 246' MSL.  
 Transmission line, tree beginning 2467' from DER, 512' left of centerline, up to 104' AGL/244' MSL.  
 Transmission lines beginning 3217' from DER, 783' left of centerline, up to 112' AGL/255' MSL.  
 Transmission line 4802' from DER, 1350' left of centerline, 110' AGL/266' MSL.

Rwy 13R: Fence 146' from DER, 8' left of centerline, 4' AGL/140' MSL.  
 Pole, fence beginning 163' from DER, 7' left of centerline, up to 10' AGL/147' MSL.  
 Vehicles on road beginning 177' from DER, 15' left of centerline, up to 151' MSL.  
 Electrical system, vehicle on road beginning 185' from DER, 33' right of centerline, up to 34' AGL/168' MSL.  
 Vehicle on road 232' from DER, 330' left of centerline, 15' AGL/155' MSL.  
 Tree, vehicle on road beginning 255' from DER, 315' right of centerline, up to 175' MSL.  
 Pole 384' from DER, 277' left of centerline, 21' AGL/156' MSL.  
 Tree, pole beginning 545' from DER, 138' right of centerline, up to 185' MSL.  
 Tree 660' from DER, 152' left of centerline, 166' MSL.  
 Tree 700' from DER, 425' right of centerline, 200' MSL.  
 Trees, electrical systems, buildings beginning 701' from DER, 75' right of centerline, up to 229' MSL.  
 Tree 709' from DER, 30' left of centerline 168' MSL.  
 Tree 1152' from DER, 192' left of centerline, 193' MSL.  
 Tree 1380' from DER, 852' left of centerline, 214' MSL.  
 Tree, building beginning 1642' from DER, 538' left of centerline, up to 225' MSL.  
 Tree 2134' from DER, 807' left of centerline, 240' MSL.  
 Trees, transmission line beginning 2205' from DER, 96' left of centerline, up to 246' MSL.  
 Trees, poles beginning 2436' from DER, 349' right of centerline, up to 233' MSL.  
 Transmission lines beginning 3218' from DER, 1082' left of centerline, up to 112' AGL/255' MSL.  
 Transmission line 4803' from DER, 1649' left of centerline, 110' AGL/266' MSL.  
 Tower 2.2 NM from DER, 3840' right of centerline, 104' AGL/526' MSL.

SW-2, 26 DEC 2024 to 23 JAN 2025

SW-2, 26 DEC 2024 to 23 JAN 2025