

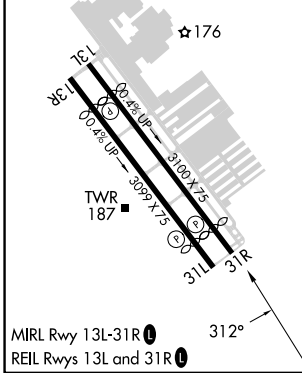
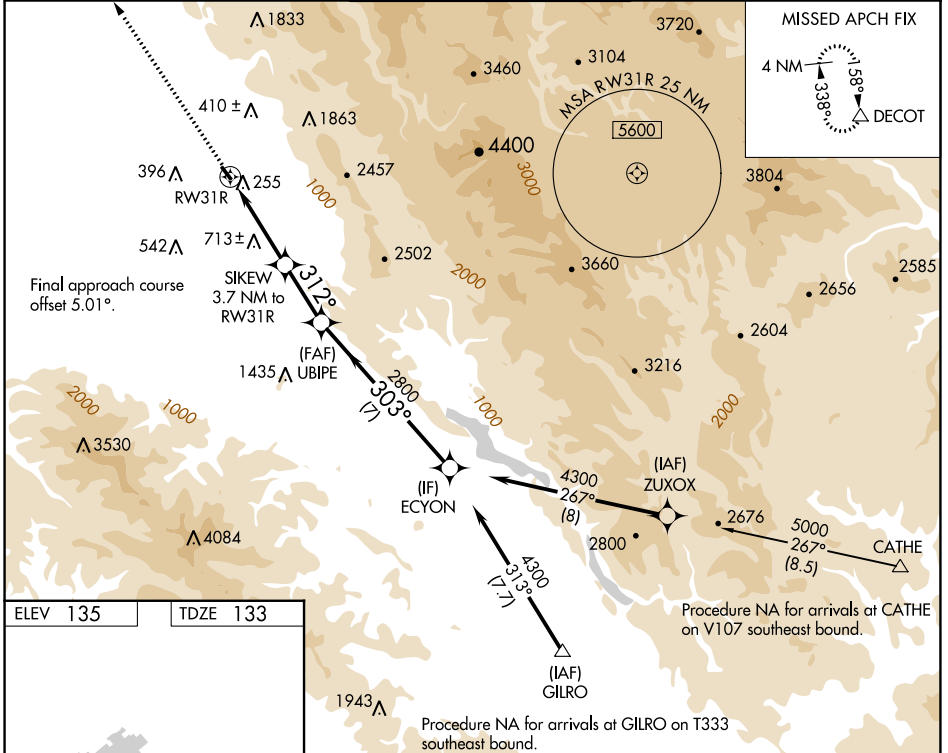
APP CRS	Rwy Idg	2690
312°	TDZE	133
	Apt Elev	135

RNAV (GPS) Y RWY 31R

REID-HILLVIEW OF SANTA CLARA COUNTY (R.H.V)

RNP APCH.		MISSED APPROACH: Climb to 4000 direct DECOT and hold.
⚠ NA Circling Rwy 31L NA at night. Rwy 31R helicopter visibility reduction below 3/4 SM NA. VDP NA when using Norman Y Mineta San Jose Intl altimeter setting. Circling east of Rwy 13L-31R NA at night. When control tower closed, use Norman Y Mineta San Jose Intl altimeter setting and increase all MDAs 40 feet.		

ATIS	NORCAL APP CON	REID-HILLVIEW TOWER * (Rwy 13L-31R) (Rwy 13R-31L)	GND CON	UNICOM
125.2	120.1 290.25	119.8 (CTAF) 126.1	121.65	122.95



ELEV 135	TDZE 133
4000	DECOT
RW31R → 2.6 NM → SIKEW 3.7 NM to RW31R → 1.1 NM → UBIPE → 2.5 NM → ECYON → 7 NM → CATHE	
Procedure NA for arrivals at CATHE on V107 southeast bound.	
Procedure NA for arrivals at GILRO on T333 southeast bound.	
CATEGORY	A
LNAV MDA	1300-1 1/4 1167 (1200-1 1/4)
CIRCLING	1300-1 1/4 1165 (1200-1 1/4)

SW-2, 26 DEC 2024 to 23 JAN 2025

SW-2, 26 DEC 2024 to 23 JAN 2025