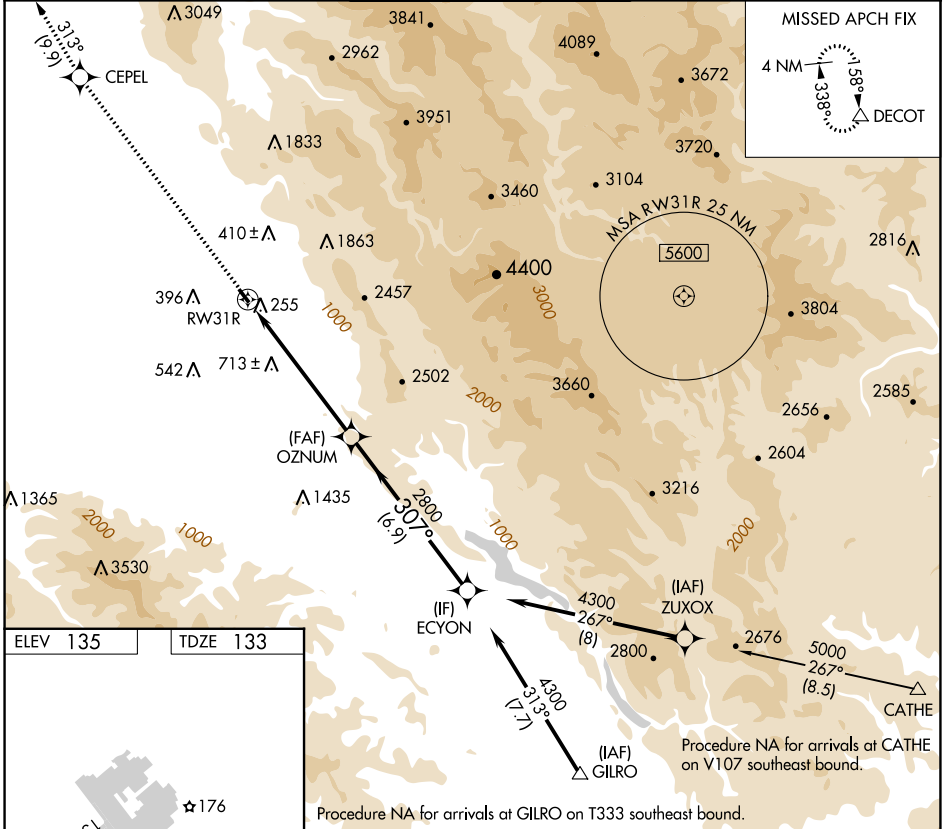


WAAS CH 58316 W31A	APP CRS 307°	Rwy Idg TDZE 133 Apt Elev 135	2690
--	------------------------	---	-------------

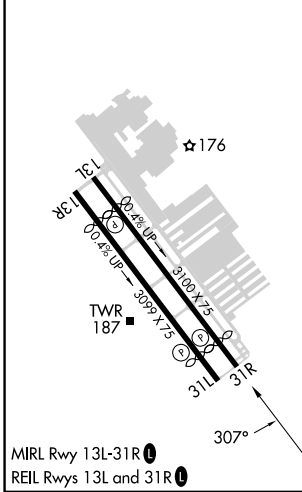
RNAV (GPS) Z RWY 31R

REID-HILLVIEW OF SANTA CLARA COUNTY (R.H.V)

RNP APCH.		REID-HILLVIEW TOWER * (Rwy 13L-31R) (Rwy 13R-31L) 119.8 (CTAF) 0 126.1		GND CON 121.65	UNICOM 122.95
ATIS 125.2	NORCAL APP CON 120.1 290.25	When control tower closed, use Norman Y Mineta San Jose Intl altimeter setting and increase DA to 558 feet and visibility to 1¼ SM. Rwy 31R helicopter visibility reduction below ¾ SM NA.		MISSED APPROACH: Climb to 4000 direct CEPEL and on track 313° to DECOT and hold.	



ELEV 135	TDZE 133
----------	----------



4000	CEPEL	tr 313°	DECOT	OZNUM		ECYON	
↑	✦		△				
				RW31R		4300	
				2800		307°	
				2800		GP 4.00°	
				6.2 NM		6.9 NM	
CATEGORY		A	B	C	D		
LPV	DA	533-1¼ 400 (400-1¼)		NA			

SW-2, 26 DEC 2024 to 23 JAN 2025

SW-2, 26 DEC 2024 to 23 JAN 2025