

WAAS CH 86337 W24A	APP CRS 242°	Rwy Idg TDZE Apt Elev	3300 9 9
--	------------------------	-----------------------------	-------------------------------------

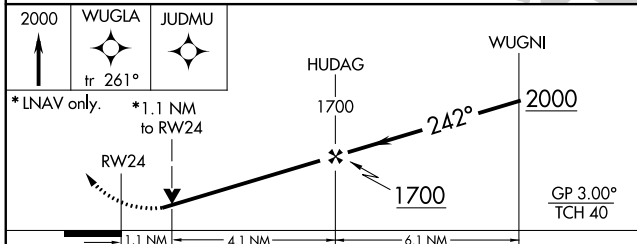
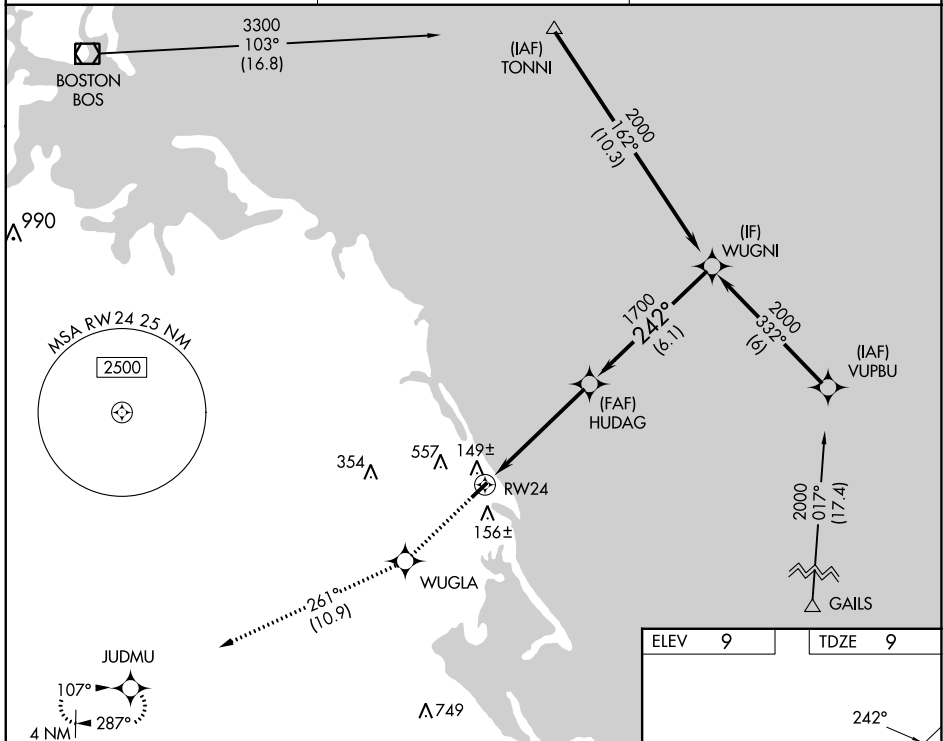
RNAV (GPS) RWY 24

MARSHFIELD MUNI - GEORGE HARLOW FLD (GHG)

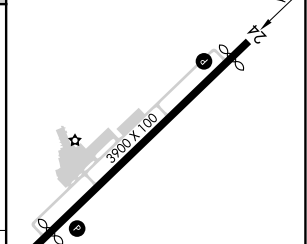
⚠ For uncompensated Baro-VNAV systems, LNAV/VNAV NA below -15°C (5°F) or above 54°C (130°F). DME/DME RNP-0.3 NA. When local altimeter setting not received, use Plymouth altimeter setting and increase all DA 47 feet, and all MDA 60 feet; increase LPV all Cats visibility ¼ mile, increase LNAV/VNAV all Cats visibility ½ mile. Baro VNAV and VDP NA when using Plymouth altimeter setting. Helicopter visibility reduction below ¾ SM NA.

MISSED APPROACH: Climb to 2000 direct WUGLA and on track 261° to JUDMU and hold.

AWOS-3 120.0	BOSTON APP CON 124.1	UNICOM 122.8 (CTAF) 0
------------------------	--------------------------------	---------------------------------



ELEV 9	TDZE 9
--------	--------



CATEGORY	A	B	C	D
LPV DA	359-1½	350 (400-1½)		NA
LNAV/VNAV DA	403-1¾	394 (400-1¾)		NA
LNAV MDA	400-1	391 (400-1)		NA
C CIRCLING	500-1 491 (500-1)	880-1¼ 871 (900-1¼)		NA

REIL Rwy 6 and 24
MIRL Rwy 6-24

RNAV (GPS) RWY 24

NE-1, 26 DEC 2024 to 23 JAN 2025

NE-1, 26 DEC 2024 to 23 JAN 2025