

LOC I-CNO <b>111.5</b>	APP CRS <b>255°</b>	Rwy Idg <b>4858</b>
		TDZE <b>636</b>
		Apt Elev <b>650</b>

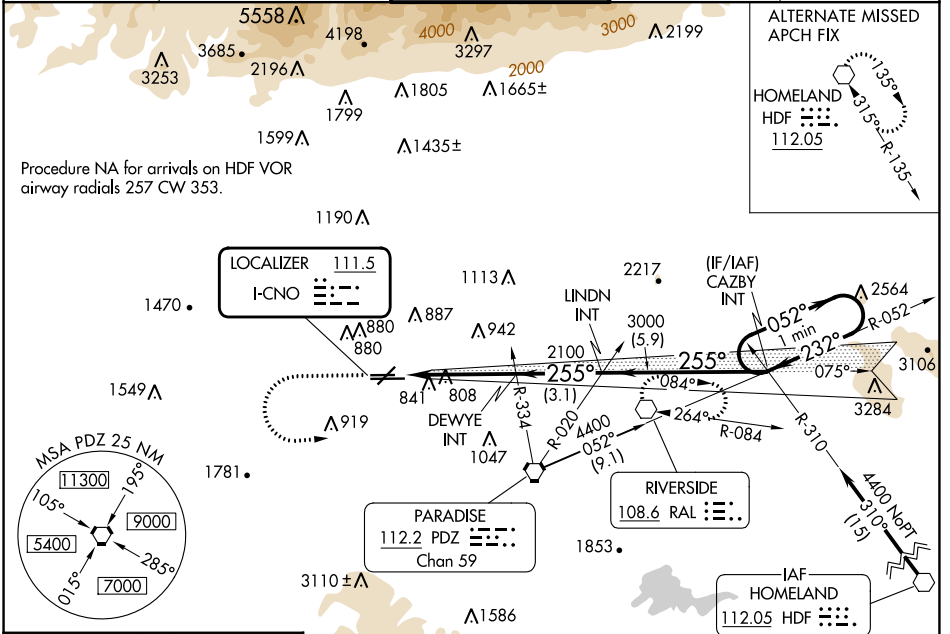
# ILS or LOC RWY 26R

CHINO (CNO)

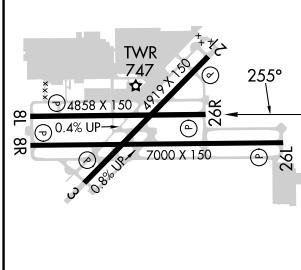
**▼** Helicopter visibility reduction below 3/4 SM NA.  
**▲** When local altimeter setting not received, use Ontario altimeter setting and increase DA to 940 feet and all visibilities 1/4 SM; increase all MDAs 60 feet and visibility S-LOC 26R and Circling Cat C and D 1/4 SM.

MISSED APPROACH: Climb to 1100 then climbing left turn to 4500 direct RAL VOR and hold, continue climb-in-hold to 4500.

ATIS <b>125.85</b>	SOCAL APP CON <b>135.4 377.125</b>	CHINO TOWER * <b>118.5 (CTAF)</b>	GND CON <b>121.6</b>	UNICOM <b>122.95</b>
-----------------------	---------------------------------------	--------------------------------------	-------------------------	-------------------------



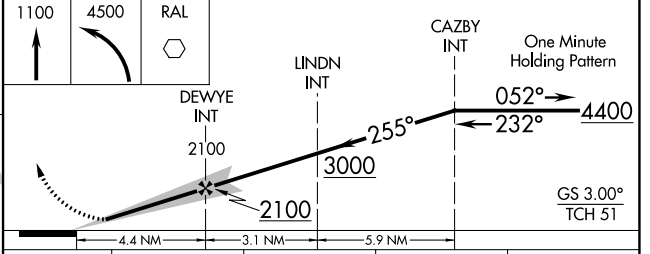
ELEV 650	TDZE 636
----------	----------



REIL Rwy 3 and 21  
 MIRL Rwy 3-21 and 8R-26L  
 HIRL Rwy 8L-26R

FAF to MAP 4.4 NM

Knots	60	90	120	150	180
Min:Sec	4:24	2:56	2:12	1:46	1:28



CATEGORY	A	B	C	D
S-ILS 26R	886-3/4 250 (300-3/4)			
S-LOC 26R	1060-1	424 (500-1)	1060-1 1/4	424 (500-1 1/4)
CIRCLING	1180-1 530 (600-1)	1200-1 550 (600-1)	1240-1 1/2 590 (600-1 1/2)	1340-2 1/4 690 (700-2 1/4)

SW-3, 26 DEC 2024 to 23 JAN 2025

SW-3, 26 DEC 2024 to 23 JAN 2025