

APP CRS	Rwy ldg	5271
063°	TDZE	20
	Apt Elev	20

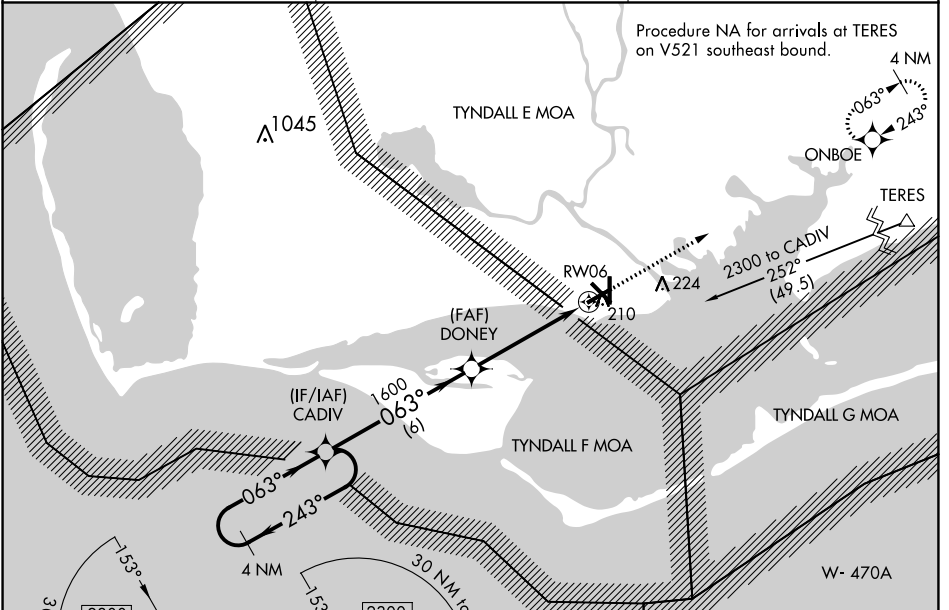
RNAV (GPS) RWY 6

APALACHICOLA RGNL-CLEVE RANDOLPH FLD (AAF)

▼ DME/DME RNP-0.3 NA. Helicopter visibility reduction below 1 SM NA. When local altimeter setting not received, use Northwest Florida Beaches Intl altimeter setting and increase all MDAs 140 feet, increase LNAV Cats C/D visibility 3/8 SM and Circling Cats C/D visibility 1/2 SM. Straight-in Rwy 6 NA at night, Circling Rwy 6, 14, 18, 24, 32 NA at night.

MISSED APPROACH: Climb to 3000 direct ONBOE and hold.

ASOS 119.925	TYNDALL APP CON * 124.15	UNICOM 122.8 (CTAF) 0
------------------------	------------------------------------	---------------------------------

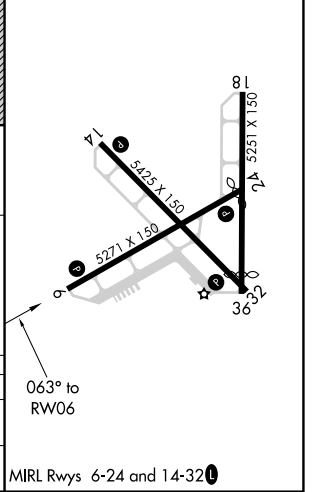
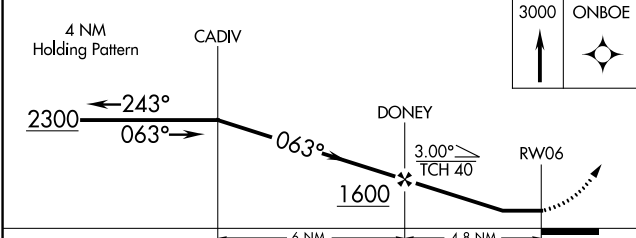


Procedure NA for arrivals at TERES on V521 southeast bound.

SE-3, 26 DEC 2024 to 23 JAN 2025

SE-3, 26 DEC 2024 to 23 JAN 2025

ELEV	20	TDZE	20
------	----	------	----



CATEGORY	A	B	C	D
LNAV MDA	460-1	440 (500-1)	460-1 3/8	440 (500-1 3/8)
CIRCLING	520-1	500 (500-1)	680-1 3/4 660 (700-1 3/4)	680-2 660 (700-2)

RNAV (GPS) RWY 6