

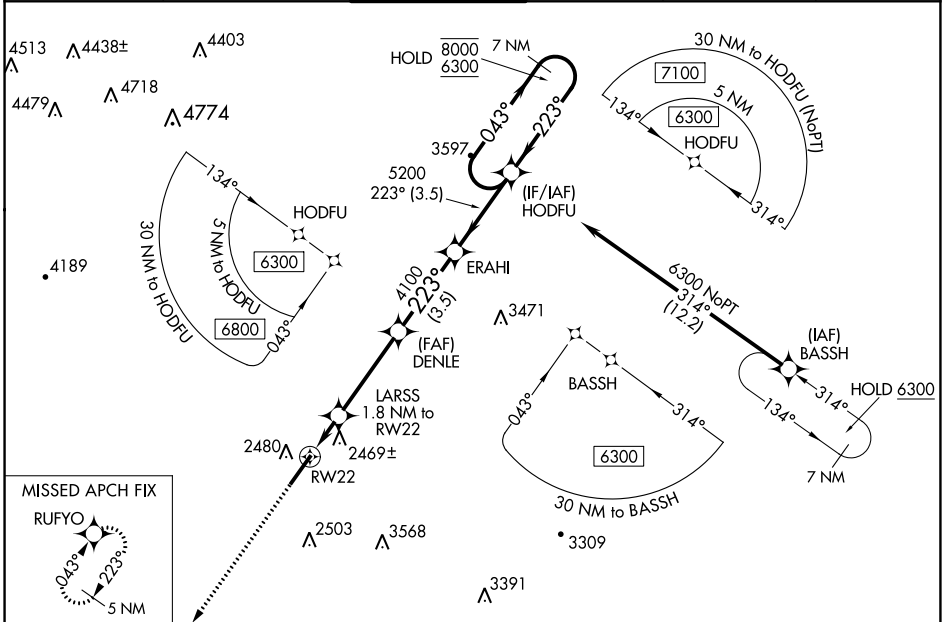
WAAS CH 99441 W22A	APP CRS 223°	Rwy Idg TDZE Apt Elev	7003 2302 2302
--	------------------------	-----------------------------	---

RNAV (GPS) RWY 22

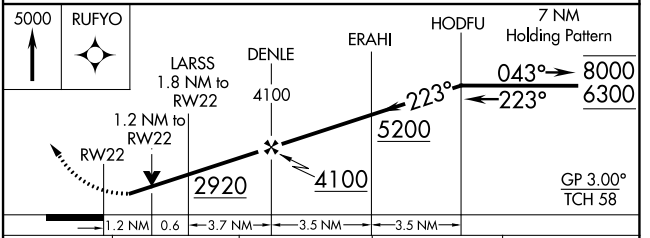
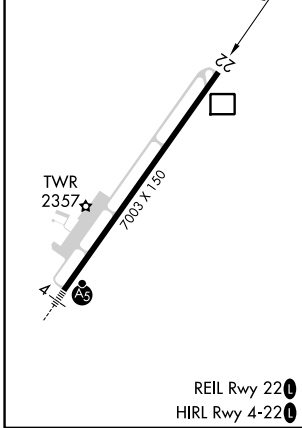
GREENBRIER VALLEY (LWB)

RNP APCH - GPS.		MISSED APPROACH: Climb to 5000 direct RUFYO and hold.			
▽ Rwy 22 helicopter visibility reduction below 3/4 SM NA. △ For uncompensated Baro-VNAV systems, LNAV/VNAV NA below -19°C or above 54°C.					

ATIS* 121.4	WASHINGTON CENTER 134.4 353.9	LEWISBURG TOWER* 118.9 (CTAF) 0	GND CON 121.9	CLNC DEL 125.725 (When twr closed)	UNICOM 122.95
-----------------------	---	---	-------------------------	---	-------------------------



ELEV 2302	D	TDZE 2302
-----------	----------	-----------



CATEGORY	A	B	C	D
LPV DA		2614-7/8	312 (400-7/8)	
LNAV/VNAV DA		2723-1/4	421 (500-1/4)	
LNAV MDA	2720-1	418 (500-1)	2720-1/8	418 (500-1/8)
C CIRCLING	2840-1 538 (600-1)	3040-1 738 (800-1)	3280-3 978 (1000-3)	3700-3 1398 (1400-3)

NE-4, 26 DEC 2024 to 23 JAN 2025

NE-4, 26 DEC 2024 to 23 JAN 2025