

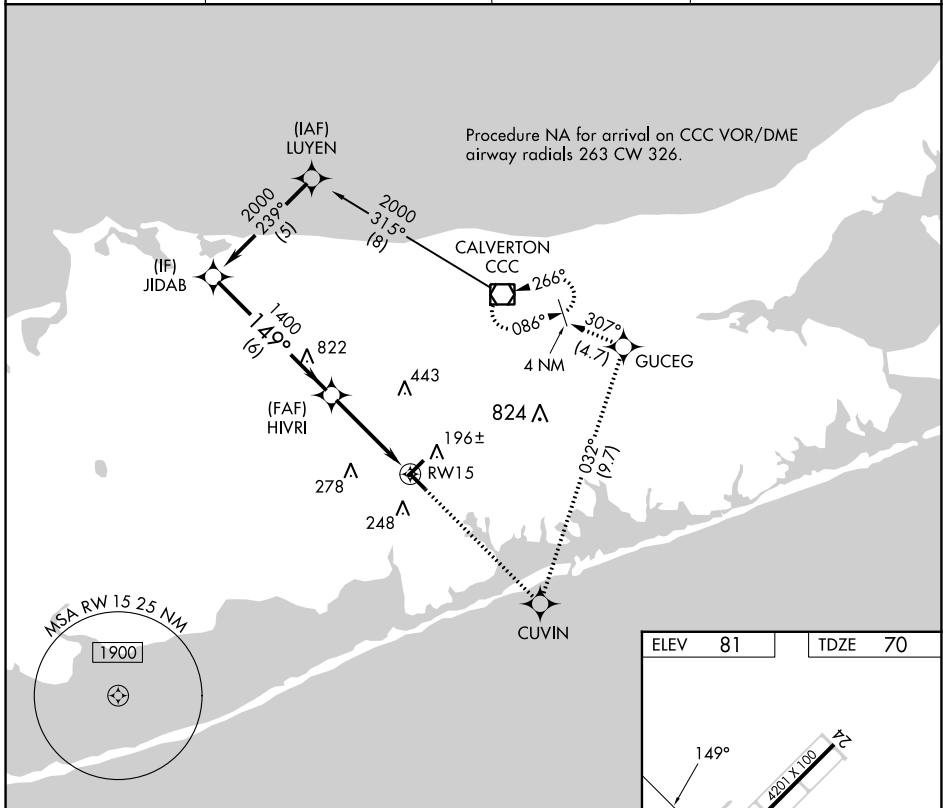
APP CRS	Rwy Idg	<b>4222</b>
<b>149°</b>	TDZE	<b>70</b>
	Apt Elev	<b>81</b>

# RNAV (GPS) RWY 15

BROOKHAVEN (HWV)

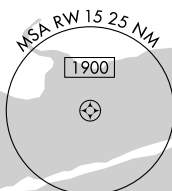
RNP APCH - GPS.	MISSED APPROACH: Climb to 2000 direct CUVIN and left turn on track 032° to GUCEG and on track 307° to CCC VOR/DME and hold.
<p>▼ Rwy 15 helicopter visibility reduction below 1 SM NA.</p> <p>▲ Straight-in Rwy 15 NA at night, Circling Rwy 6, 15 NA at night.</p>	

ASOS <b>119.625</b>	NEW YORK APP CON <b>120.05 343.75</b>	CLNC DEL <b>133.2</b>	UNICOM <b>122.8 (CTAF) 0</b>
------------------------	--	--------------------------	---------------------------------

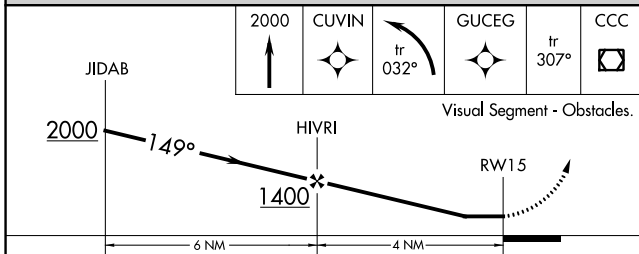
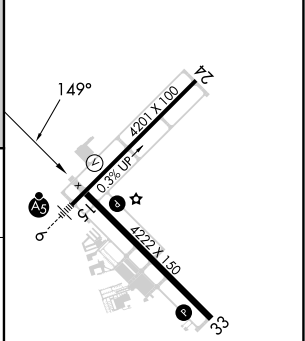


NE-2, 26 DEC 2024 to 23 JAN 2025

NE-2, 26 DEC 2024 to 23 JAN 2025



ELEV	81	TDZE	70
------	----	------	----



CATEGORY	A	B	C	D
LNVA MDA	640-1	570 (600-1)		NA
<b>C</b> CIRCLING	640-1	559 (600-1)		NA

REIL Rwy 15, 24 and 33 0

MIRL Rwy 6-24 and 15-33 0