

WAAS CH 81927 W07A	APP CRS 073°	Rwy Idg TDZE Apt Elev	4491 730 730
--	------------------------	-----------------------------	---

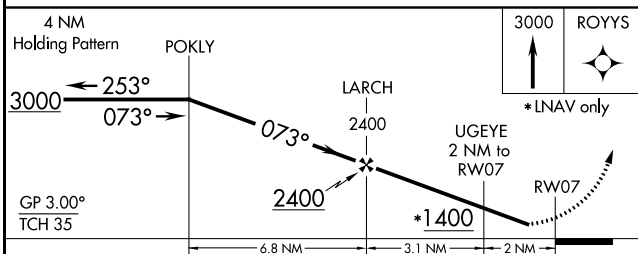
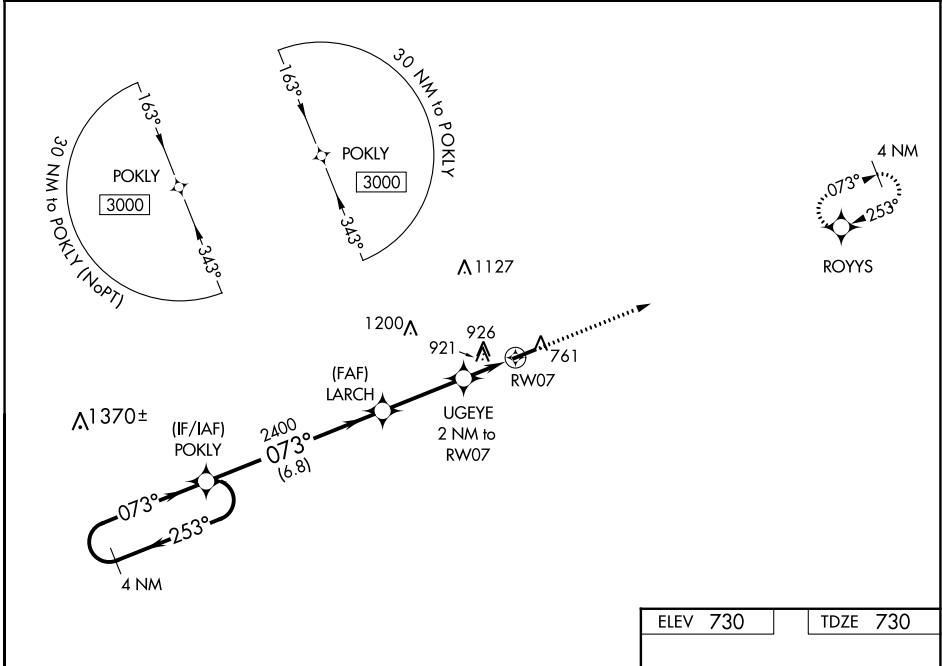
RNAV (GPS) RWY 7

WILLIAMS COUNTY (ØG6)

▼ Baro-VNAV NA. When VGSI inop, Straight-in/Circling Rwy 7 procedure NA at night.
▲NA DME/DME RNP-0.3 NA. Visibility reduction by helicopters NA. Use Defiance Meml altimeter setting; when not received, use De Kalb County altimeter setting; increase LPV DA to 1063 and all visibilities 1/8 SM, LNAV/VNAV DA to 1300 and all visibilities 1/4 SM; increase all MDAs 60 feet and LNAV and Circling visibility Cats C/D 1/4 SM.

MISSED APPROACH: Climb to 3000 direct ROYYS and hold.

DFI ASOS 121.425	TOLEDO APP CON 134.35 307.0	UNICOM 122.8 (CTAF)	123.0
----------------------------	---------------------------------------	-------------------------------	--------------



ELEV 730	TDZE 730
3000	ROYYS
*LNAV only	
MIRL Rwy 7-25	
REIL Rws 7 and 25	

CATEGORY	A	B	C	D
LPV DA	1003-1		273 (300-1)	
LNAV/VNAV DA	1240-1¾		510 (600-1¾)	
LNAV MDA	1260-1	530 (600-1)	1260-1½	530 (600-1½)
CIRCLING	1300-1	570 (600-1)	1300-1½	1520-2½
			570 (600-1½)	790 (800-2½)

EC-2, 26 DEC 2024 to 23 JAN 2025

EC-2, 26 DEC 2024 to 23 JAN 2025