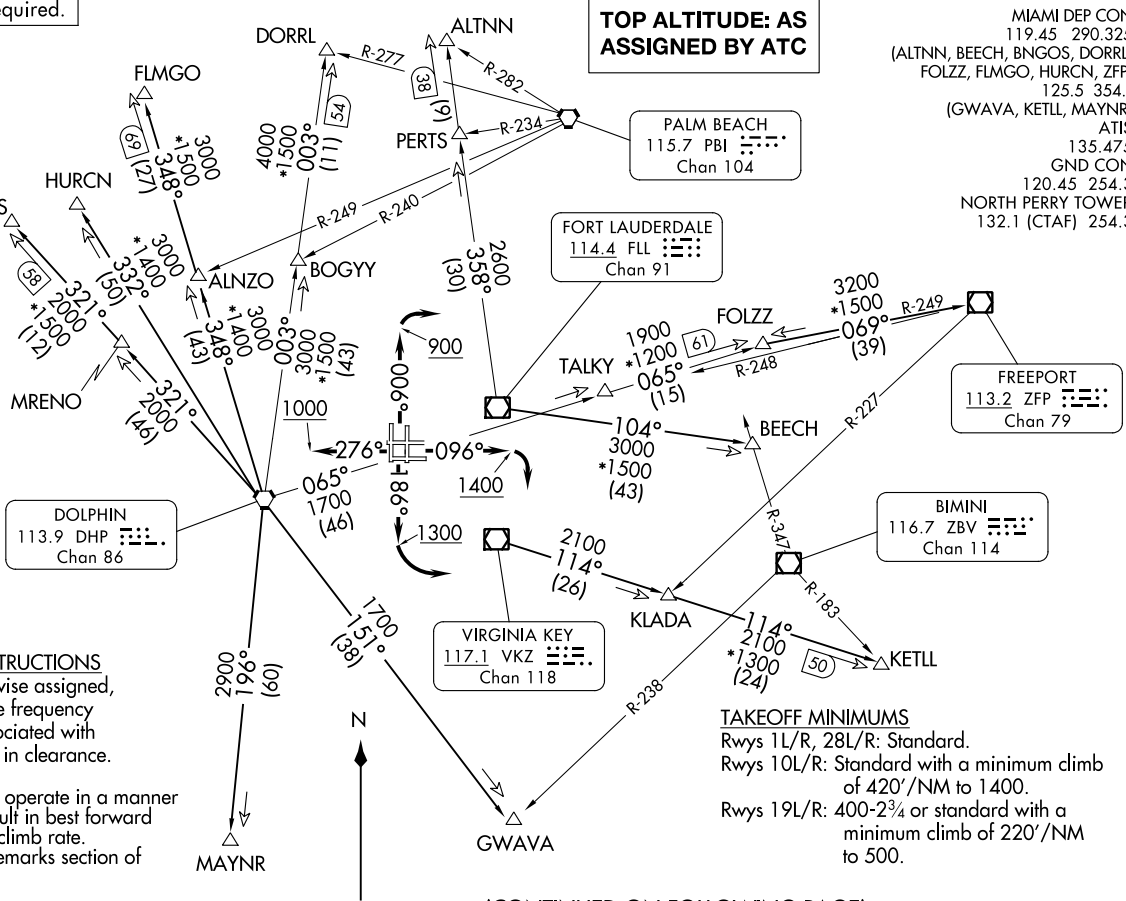
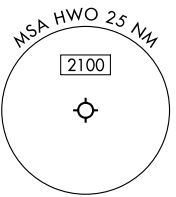


RADAR and DME required.

**TOP ALTITUDE: AS
ASSIGNED BY ATC**

MIAMI DEP CON
119.45 290.325
(ALTNN, BEECH, BNGOS, DORRL,
FOLZZ, FLMGO, HURCN, ZFP)
125.5 354.1
(GWAVA, KETLL, MAYNR)
ATIS
135.475
GND CON
120.45 254.3
NORTH PERRY TOWER*
132.1 (CTAF) 254.3



SPECIAL INSTRUCTIONS
Unless otherwise assigned,
use departure frequency
depicted associated with
the transition in clearance.

NOTE: Turboprops operate in a manner
that will result in best forward
speed and climb rate.

NOTE: File DP in remarks section of
flight plan.

NOTE: Chart not to scale.

TAKEOFF MINIMUMS

Rwys 1L/R, 28L/R: Standard.
Rwys 10L/R: Standard with a minimum climb
of 420'/NM to 1400.
Rwys 19L/R: 400-2¾ or standard with a
minimum climb of 220'/NM
to 500.

(CONTINUED ON FOLLOWING PAGE)

MIAMI TWO DEPARTURE
(MIA2.MIA) 260DEC24

(MIA2.MIA) 24361
MIAMI TWO DEPARTURE

AL-5606 (FAA)

HOLLYWOOD, FLORIDA
NORTH PERRY (HWO)

NORTH PERRY (HWO)
HOLLYWOOD, FLORIDA

MIAMI TWO DEPARTURE



DEPARTURE ROUTE DESCRIPTION

TAKEOFF RUNWAYS 1L/R: Climb on heading 006° to 900 before turning right, thence...
TAKEOFF RUNWAYS 10L/R: Climb on heading 096° to 1400 before turning right, thence...
TAKEOFF RUNWAYS 19L/R: Climb on heading 186° to 1300 before turning left, thence...
TAKEOFF RUNWAYS 28L/R: Climb on heading 276° to 1000, thence...

... on transition, maintain ATC assigned altitude. Expect filed altitude 10 minutes after departure.

ALTNN TRANSITION (MIA2.ALTNN): From over FLL VOR/DME on FLL R-358 to ALTNN.

BEECH TRANSITION (MIA2.BEECH): From over FLL VOR/DME on FLL R-104 to BEECH.

BNGOS TRANSITION (MIA2.BNGOS): From over DHP VORTAC on DHP R-321 to BNGOS.

DORRL TRANSITION (MIA2.DORRL): From over DHP VORTAC on DHP R-003 to DORRL.

FLMGO TRANSITION (MIA2.FLMGO): From over DHP VORTAC on DHP R-348 to FLMGO.

FOLZZ TRANSITION (MIA2.FOLZZ): From over DHP VORTAC on DHP R-065 to FOLZZ.

FREEPORT TRANSITION (MIA2.ZFP): From over DHP VORTAC on DHP R-065 to FOLZZ then on ZFP R-249 to ZFP VOR/DME.

GWAVA TRANSITION (MIA2.GWAVA): From over DHP VORTAC on DHP R-151 to GWAVA.

HURCN TRANSITION (MIA2.HURCN): From over DHP VORTAC on DHP R-332 to HURCN.

KETLL TRANSITION (MIA2.KETLL): From over VKZ VOR/DME on VKZ R-114 to KETLL.

MAYNR TRANSITION (MIA2.MAYNR): From over DHP VORTAC on DHP R-196 to MAYNR.

SE-3, 26 DEC 2024 to 23 JAN 2025

SE-3, 26 DEC 2024 to 23 JAN 2025