

LOC I-BJC 111.7	APP CRS 295°	Rwy Idg 9000 7002 TDZE 5599 5628 Apt Elev 5673 5673	30R 9000 7002 5599 5628 5673 5673	30L 7002 5628 5673
---------------------------	------------------------	---	---	--

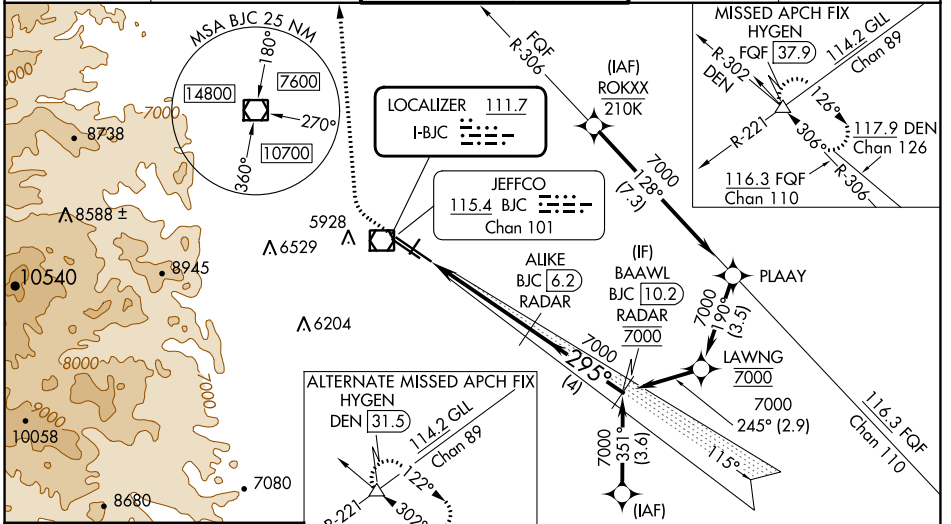
ILS or LOC RWY 30R

ROCKY MOUNTAIN METRO (BJC)

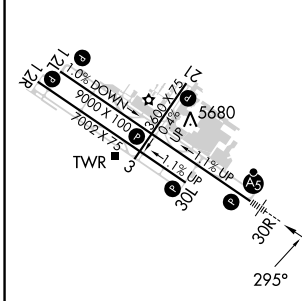
▼ DME from BJC VOR/DME. Simultaneous reception of I-BJC and BJC DME required. DME or **▲**NA RADAR required. When local altimeter setting not received, use Denver Intl altimeter setting and increase all DA 82 feet and all MDA 100 feet. Increase S-ILS 30R all Cats visibility 3/8 mile. Increase S-LOC 30R Cats B/C/D visibility 1/4 mile. Increase Sidestep R30L Cats A/B visibility 1/4 mile, Cats C/D visibility 1/2 mile and Circling Cat C visibility 1/4 mile. For inoperative MALSRL, increase S-ILS 30R all Cats visibility 1/2 mile and increase S-LOC 30R Cat C/D visibility 3/8 mile. For inoperative MALSRL, when using Denver Intl altimeter setting, increase S-ILS 30R all Cats visibility to 2 1/4 miles. Increase S-LOC 30R Cat B visibility to 1 1/4 mile and Cats C/D visibility to 2 1/2 miles. For inoperative MALSRL, when using Denver Intl altimeter setting, increase S-ILS 30R* all Cats visibility to 1 mile.
* Missed approach requires a minimum climb of 240 feet per NM to 9700.

MALSRL
Climb to 6380 then climbing right turn to 10200 on heading 360° and on FQF VORTAC R-306 to HYGEN INT/FQF 37.9 DME and hold, continue climb-in-hold to 10200.

ATIS 126.25	DENVER APP CON 125.12 263.02	METRO TOWER* 118.6 (CTAF) 233.7	GND CON 121.7	CLNC DEL 132.6
-----------------------	--	---	-------------------------	--------------------------



ELEV 5673	D TDZE 30R 5599	TDZE 30L 5628
-----------	------------------------	---------------



RADAR OR GPS REQUIRED

6380	10200	FQF R-306	HYGEN	ALIKE BJC 6.2 RADAR	BAAWL BJC 10.2 RADAR
↑	hdg 360°		△		
7000	7000				
BJC 1.9					
		295°		7000	
		4.3 NM		4 NM	
					GS 3.00° TCH 52

HIRL Rwy's 12L-30R
MIRL Rwy's 3-21 and 12R-30L
REIL Rwy's 12L, 12R and 30L

FAF to MAP 4.3 NM

Knots	60	90	120	150	180
Min:Sec	4:18	2:52	2:09	1:43	1:26

C CIRCLING

CATEGORY	A	B	C	D
S-ILS 30R		*5799-1/2	200 (200-1/2)	
S-ILS 30R		6124-1 3/8	525 (500-1 3/8)	
S-LOC 30R	6300-1/2	701 (700-1/2)	6300-1 5/8	701 (700-1 5/8)
SIDESTEP 30L	6340-1	712 (700-1)	6340-2 712 (700-2)	6340-2 1/4 712 (700-2 1/4)
C CIRCLING	6340-1	667 (700-1)	6360-2 687 (700-2)	6860-3 1187 (1200-3)

SW-1, 26 DEC 2024 to 23 JAN 2025

SW-1, 26 DEC 2024 to 23 JAN 2025