


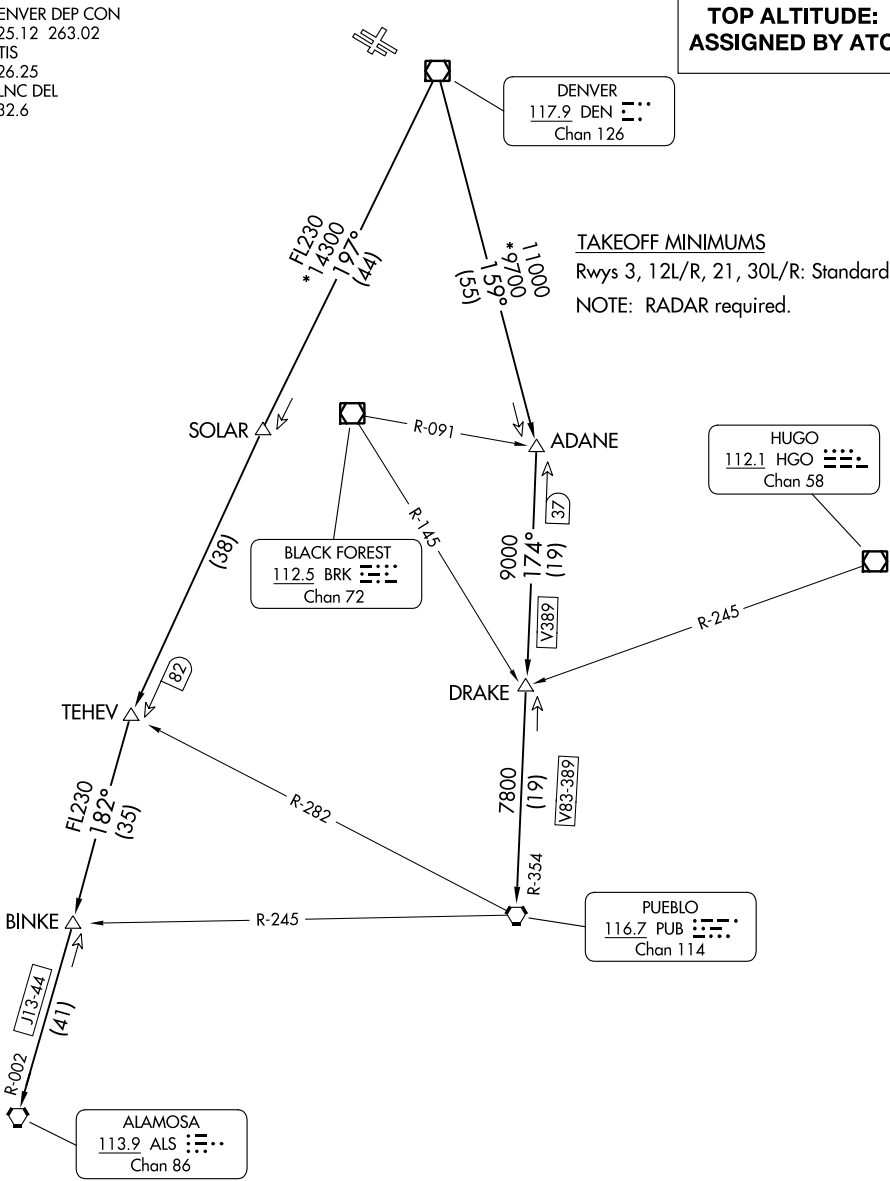
DENVER DEP CON
125.12 263.02
ATIS
126.25
CLNC DEL
132.6

**TOP ALTITUDE:
ASSIGNED BY ATC**


DENVER
117.9 DEN 
Chan 126

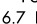
TAKEOFF MINIMUMS
Rwys 3, 12L/R, 21, 30L/R: Standard.
NOTE: RADAR required.

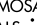
SW-1, 26 DEC 2024 to 23 JAN 2025



HUGO
112.1 HGO 
Chan 58

BLACK FOREST
112.5 BRK 
Chan 72

PUEBLO
116.7 PUB 
Chan 114

ALAMOSA
113.9 ALS 
Chan 86

NOTE: Chart not to scale.

(CONTINUED ON FOLLOWING PAGE)

SW-1, 26 DEC 2024 to 23 JAN 2025



DEPARTURE ROUTE DESCRIPTION

TAKEOFF RUNWAY 3: Climb to assigned altitude and heading between 350° CW 150° from DER, thence

TAKEOFF RUNWAYS 12L/R: Climb to assigned altitude and heading between 150° CCW 350° from DER, thence

TAKEOFF RUNWAY 21: Climbing left turn to assigned altitude and heading between 150° CCW 024° from DER, thence

TAKEOFF RUNWAYS 30L/R: Climbing right turn to assigned altitude and heading between 350° CW 113° from DER, thence

. . . .RADAR vectors to assigned route. Expect filed altitude 10 minutes after departure.

LOST COMMUNICATIONS: If no transmissions are received within one minute after departure, maintain assigned heading until 7000 feet, then climb to filed altitude via direct DEN VOR/DME, thence via assigned transition. If filed altitude is above 10000 feet, cross DEN VOR/DME at or above 11000 feet.

ALAMOSA TRANSITION (PIKES2.ALS): From over DEN VOR/DME on DEN R-197 to TEHEV, then on ALS R-002 to ALS VORTAC.

BINKE TRANSITION (PIKES2.BINKE): From over DEN VOR/DME on DEN R-197 to TEHEV, then on ALS R-002 to BINKE.

PUEBLO TRANSITION (PIKES2.PUB): From over DEN VOR/DME on DEN R-159 to ADANE, then on PUB R-354 to PUB VORTAC.

SW-1, 26 DEC 2024 to 23 JAN 2025

SW-1, 26 DEC 2024 to 23 JAN 2025