

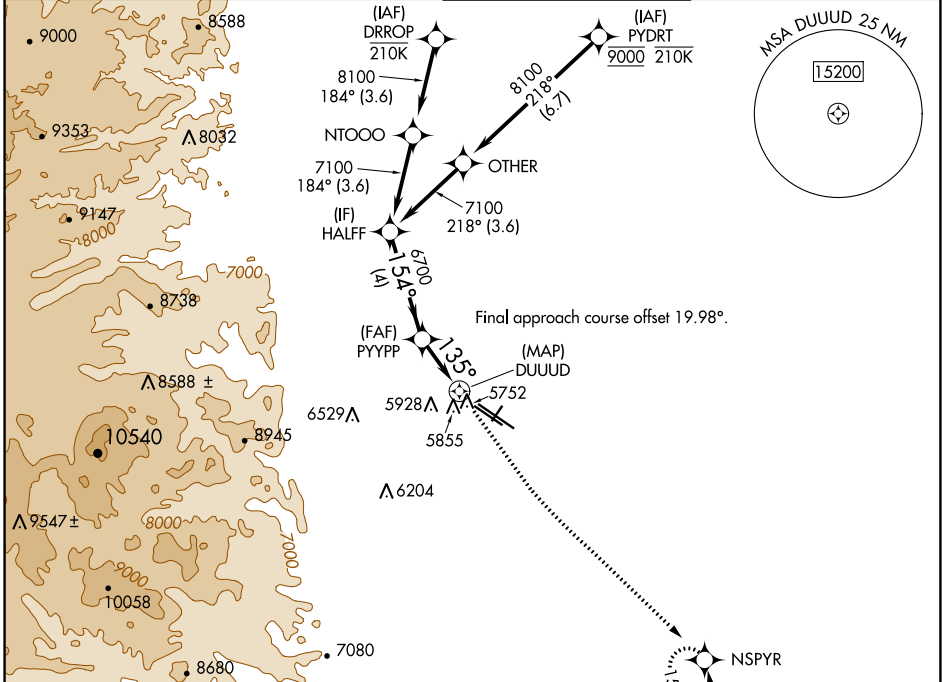
WAAS CH <b>77938</b> <b>W12A</b>	APP CRS <b>135°</b>	Rwy Idg TDZE Apt Elev	<b>9000</b> <b>5661</b> <b>5673</b>
--	------------------------	-----------------------------	---

# RNAV (GPS) RWY 12L

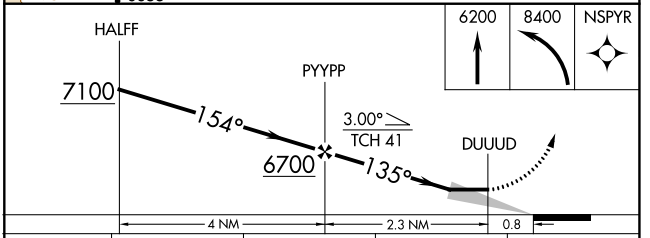
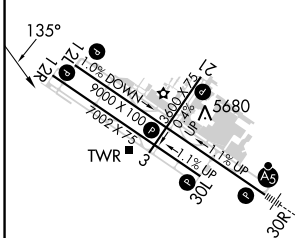
ROCKY MOUNTAIN METRO (B.JC)

RNP APCH.	MISSED APPROACH: Climb to 6200 then climbing left turn to 8400 direct NSPYR and hold.
Circling NA for Cat D southwest of Rwy 12R-30L	

ATIS <b>126.25</b>	DENVER APP CON <b>125.12 263.02</b>	METRO TOWER ★ <b>118.6 (CTAF) 233.7</b>	GND CON <b>121.7</b>	CLNC DEL <b>132.6</b>
-----------------------	--	--	-------------------------	--------------------------



ELEV 5673	<b>D</b>	TDZE 5661
-----------	----------	-----------



CATEGORY	A	B	C	D
LP MDA	6020-1 359 (400-1)			
LNAV MDA	6120-1	459 (500-1)	6120-1 3/8	459 (500-1 1/8)
<b>C</b> CIRCLING	6180-1 507 (600-1)	6240-1 567 (600-1)	6360-2 687 (700-2)	6360-2 1/4 687 (700-2 1/4)

HIRL Rwy 12L-30R   
MIRL Rwy 3-21 and 12R-30L   
REIL Rwy 12L, 12R and 30L

SW-1, 26 DEC 2024 to 23 JAN 2025

SW-1, 26 DEC 2024 to 23 JAN 2025