

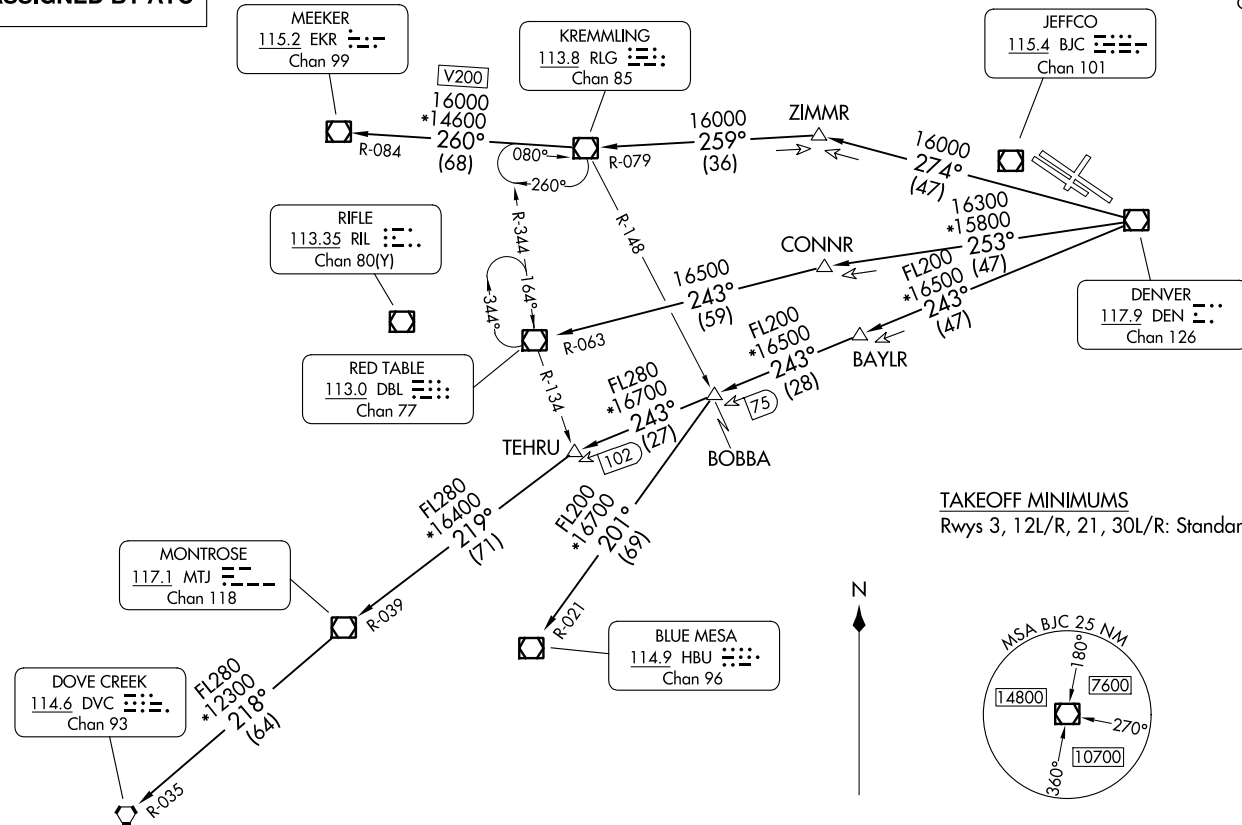
ROCKIES SIX DEPARTURE  
(ROCKI6, DEN) 16MAY24

ROCKY MOUNTAIN METRO (BJC)  
DENVER, COLORADO

**TOP ALTITUDE:  
ASSIGNED BY ATC**

RADAR required.

DENVER DEP CON  
125.12 263.02  
CLNC DEL  
132.6



ROCKIES SIX DEPARTURE  
(ROCKI6, DEN) 24137

AL-5612 (FAA)

ROCKY MOUNTAIN METRO (BJC)  
DENVER, COLORADO

**TAKEOFF MINIMUMS**  
Rwys 3, 12L/R, 21, 30L/R: Standard.

(CONTINUED ON FOLLOWING PAGE)

NOTE: Chart not to scale.



DEPARTURE ROUTE DESCRIPTION

TAKEOFF RUNWAY 3: Climb to assigned altitude and heading between 350° CW 150° from DER, thence. . . .

TAKEOFF RUNWAYS 12L/R: Climb to assigned altitude and heading between 150° CCW 350° from DER, thence. . . .

TAKEOFF RUNWAY 21: Climbing left turn to assigned altitude and heading between 150° CCW to 024° from DER, thence. . . .

TAKEOFF RUNWAYS 30L/R: Climbing right turn to assigned altitude and heading between 350° CW 113° from DER, thence. . . .

. . . . RADAR vectors to assigned route, maintain ATC assigned altitude. Expect filed altitude 10 minutes after departure.

LOST COMMUNICATIONS: If no transmissions are received within one minute after departure, maintain assigned heading until 7000 feet, then climb to filed altitude direct DEN VOR/DME, then on assigned transition. If filed altitude is above 10000 feet, cross DEN VOR/DME at or above 11000 feet.

BLUE MESA TRANSITION (ROCKI6.HBU): From over DEN VOR/DME on DEN R-243 and HBU R-021 to HBU VOR/DME.

DOVE CREEK TRANSITION (ROCKI6.DVC): From over DEN VOR/DME on DEN R-243 and MTJ R-039 to MTJ VOR/DME, then on MTJ R-218 and DVC R-035 to DVC VORTAC.

KREMMLING TRANSITION (ROCKI6.RLG): From over DEN VOR/DME on DEN R-274 and RLG R-079 to RLG VOR/DME.

MEEKER TRANSITION (ROCKI6.EKR): From over DEN VOR/DME on DEN R-274 and RLG R-079 to RLG VOR/DME, then on RLG R-260 and EKR R-084 to EKR VOR/DME.

MONTROSE TRANSITION (ROCKI6.MTJ): From over DEN VOR/DME on DEN R-243 and MTJ R-039 to MTJ VOR/DME.

RED TABLE TRANSITION (ROCKI6.DBL): From over DEN VOR/DME on DEN R-253 and DBL R-063 to DBL VOR/DME.

SW-1, 26 DEC 2024 to 23 JAN 2025

SW-1, 26 DEC 2024 to 23 JAN 2025