

# SKYEE ONE DEPARTURE (RNAV)

AL-5612 (FAA)

ROCKY MOUNTAIN METRO (BJC)  
DENVER, COLORADO

**TOP ALTITUDE:  
FL230**

ATIS  
126.25  
CLNC DEL  
132.6  
DENVER DEP CON  
125.12 263.02



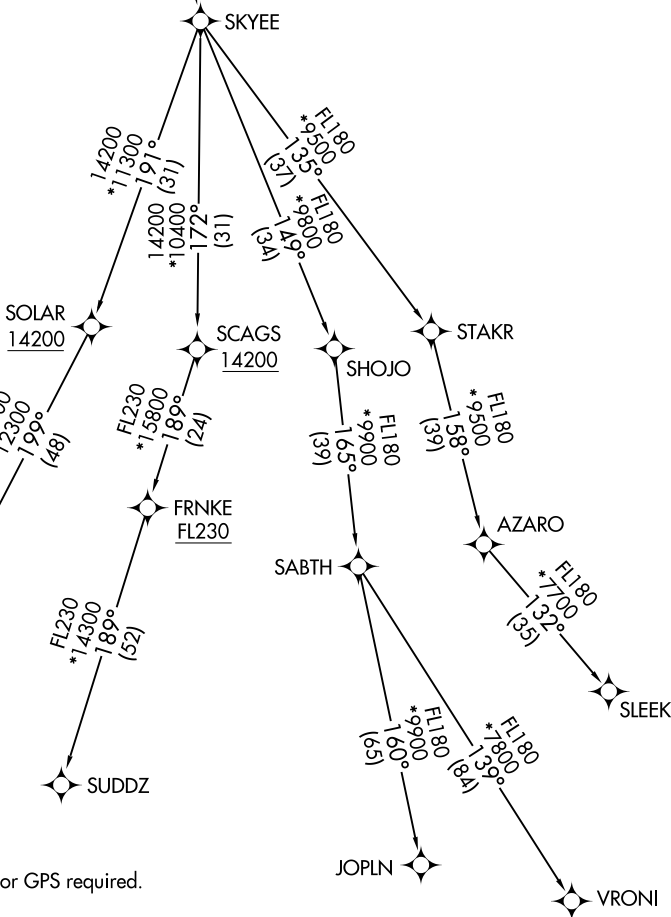
SATLE  
8000

SKYEE

### TAKEOFF MINIMUMS

Rwys 3, 21: NA.

Rwys 12L/R, 30L/R: Standard.



NOTE: DME/DME/IRU or GPS required.

NOTE: RNAV 1.

NOTE: Turbojets only.

NOTE: RADAR required.

NOTE: Chart not to scale.

(NARRATIVE ON FOLLOWING PAGE)

SW-1, 26 DEC 2024 to 23 JAN 2025

SW-1, 26 DEC 2024 to 23 JAN 2025

# SKYEE ONE DEPARTURE (RNAV)

(SKYEE1 .SKYEE) 26MAR20

DENVER, COLORADO  
ROCKY MOUNTAIN METRO (BJC)



DEPARTURE ROUTE DESCRIPTION

TAKEOFF RUNWAYS 12L/R: Climb on a heading between 350° CW 150° as assigned by ATC. Thence. . . .

TAKEOFF RUNWAYS 30L/R: Climbing right turn on a heading between 350° CW 113° as assigned by ATC. Thence. . . .

. . . .expect RADAR vectors to cross SATLE at 8000 then on track 160° to SKYEE then on (transition) maintain FL230 or filed lower altitude. Expect higher filed altitude ten minutes after departure.

DAAYE TRANSITION (SKYEE1 .DAAYE)

JOPLN TRANSITION (SKYEE1 .JOPLN)

SLEEK TRANSITION (SKYEE1 .SLEEK)

SUDDZ TRANSITION (SKYEE1 .SUDDZ)

VRONI TRANSITION (SKYEE1 .VRONI)

SW-1, 26 DEC 2024 to 23 JAN 2025

SW-1, 26 DEC 2024 to 23 JAN 2025