

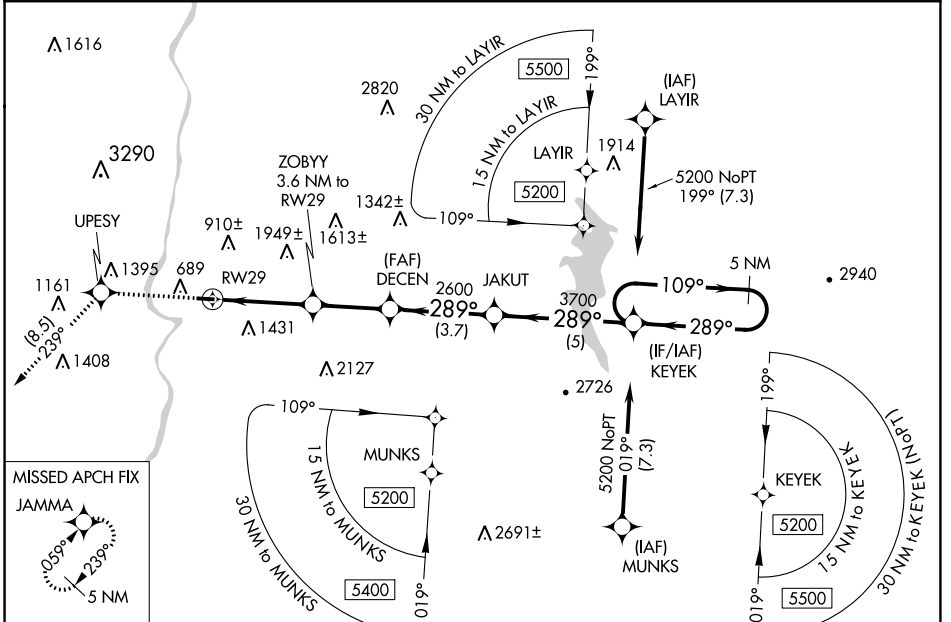
APP CRS Rwy Idg **3098**  
 289° TDZE **543**  
 Apt Elev **544**

**RNAV (GPS) RWY 29**  
 CLAREMONT MUNI (CNH)

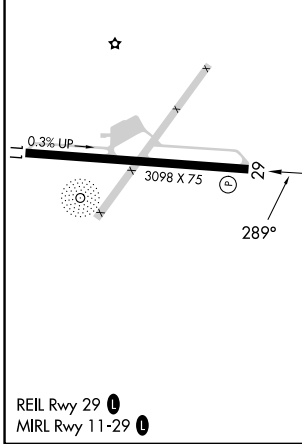
**NA** When local altimeter setting not received, use Hartsness State altimeter setting and increase all MDAs 20 feet. DME/DME RNP-0.3 NA. Procedure NA at night. Rwy 11, 29 helicopter visibility reduction below 1 SM NA.

**MISSED APPROACH:** Climb to 5400 direct UPESY and on track 239° to JAMMA and hold, continue climb-in-hold to 5400.

BOSTON CENTER **134.7 269.475** UNICOM **122.7 (CTAF)**



ELEV **544** TDZE **543**



|          |                          |                           |        |                             |
|----------|--------------------------|---------------------------|--------|-----------------------------|
| 5400     | UPESY                    | tr 239°                   | JAMMA  | Visual Segment - Obstacles. |
|          |                          |                           |        | KEYEK 5 NM Holding Pattern  |
|          | ZOBYY 3.6 NM to RWY 29   | DECEN                     | JAKUT  | KEYEK 5200                  |
|          | RWY 29                   | 1720                      | 2600   | 3700                        |
|          | 3.6 NM                   | 2.8 NM                    | 3.7 NM | 5 NM                        |
| CATEGORY | A                        | B                         | C      | D                           |
| LNAV MDA | 1520-1¼<br>977 (1000-1¼) | 1520-1½<br>977 (1000-1½)  |        | NA                          |
| CIRCLING | 1520-1¼<br>976 (1000-1¼) | 1740-1½<br>1196 (1200-1½) |        | NA                          |

NE-1, 26 DEC 2024 to 23 JAN 2025

NE-1, 26 DEC 2024 to 23 JAN 2025