

LOC/DME I-PSG <b>110.5</b> Chan <b>42</b>	APP CRS <b>164°</b>	Rwy Ldg TDZE Apt Elev <b>113</b>	<b>N/A</b> <b>N/A</b> <b>113</b>
---	------------------------	--	--

# LDA-D

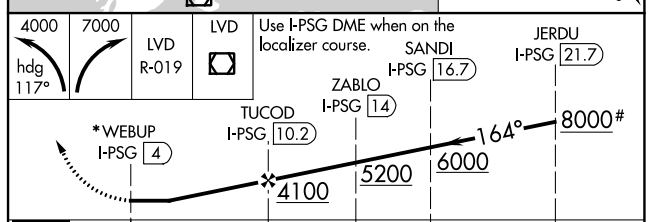
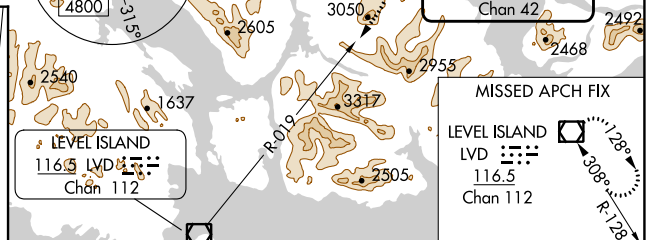
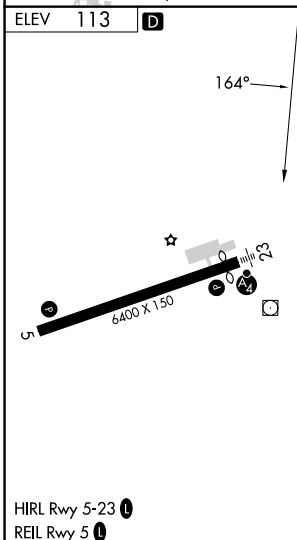
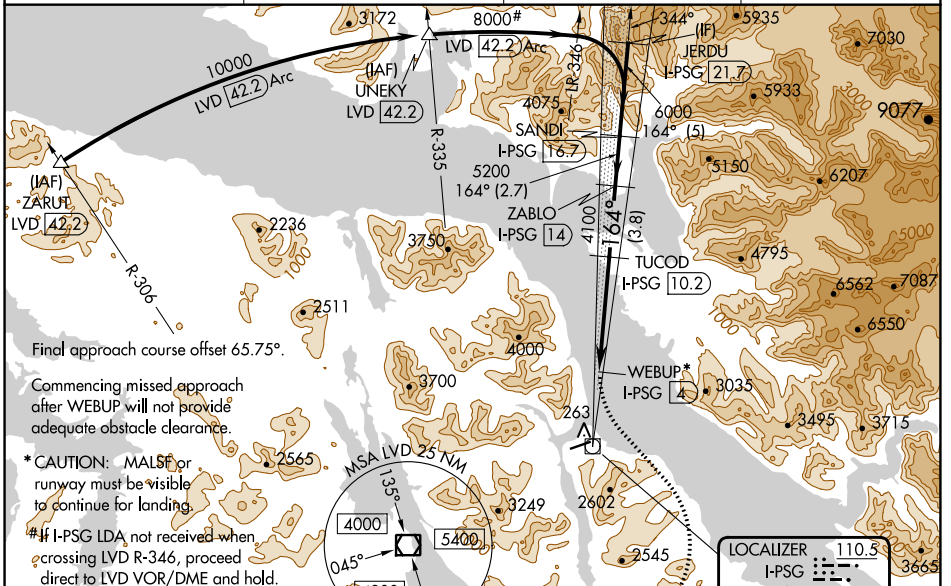
## PETERSBURG JAMES A JOHNSON (PSG) (PAPG)

DME required.

**V** Circling NA southeast of Rwy 5-23. Inop table does not apply.  
**A** Circling Rwy 5 NA at night. When local altimeter setting not received, use PSG/PAPG altimeter setting and increase all MDAs 80 feet.  
**38** -10°C

**MISSED APPROACH:** Climbing left turn to 4000 on heading 117° then climbing right turn to 7000 on LVD VOR/DME R-019 to LVD VOR/DME and hold, continue climb-in-hold to 7000.

AWOS-3P <b>125.8</b>	ANCHORAGE CENTER <b>118.0</b>	SITKA RADIO <b>122.35</b>	CTAF <b>122.50</b>
-------------------------	----------------------------------	------------------------------	-----------------------



CATEGORY	A	B	C	D
<b>C</b> CIRCLING	1800-5 1687 (1700-5)	1880-5 1767 (1800-5)	3080-5 2967 (3000-5)	NA

AK, 26 DEC 2024 to 20 FEB 2025

AK, 26 DEC 2024 to 20 FEB 2025