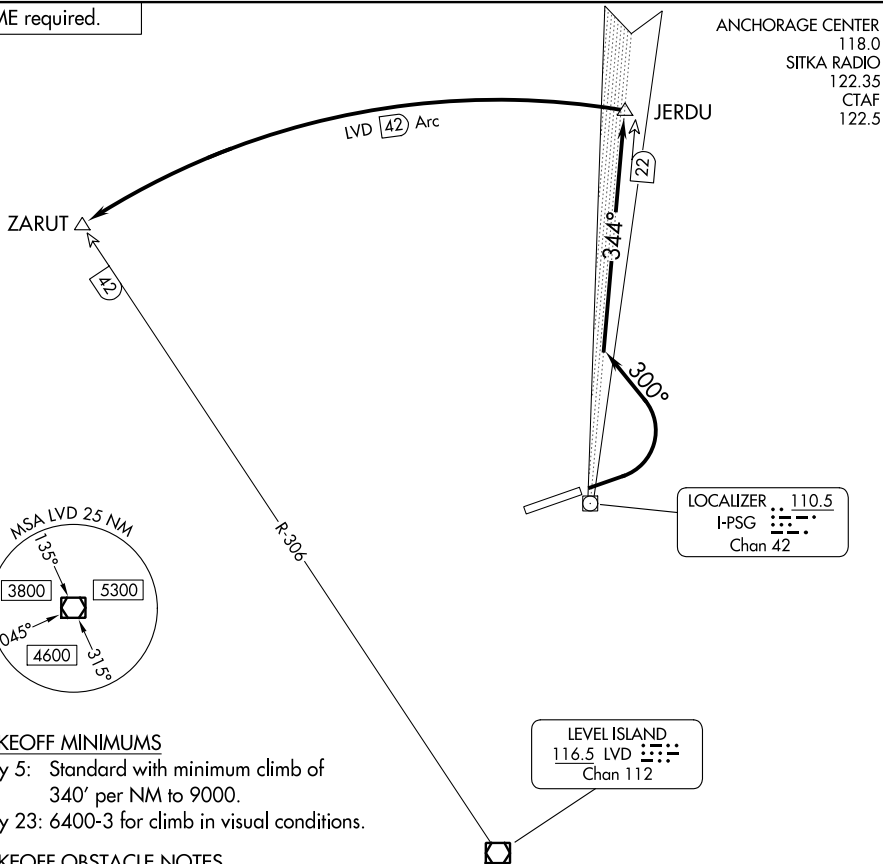


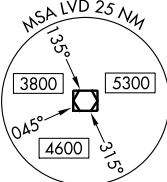
DME required.



ANCHORAGE CENTER 118.0
 SITKA RADIO 122.35
 CTAF 122.5

LOCALIZER 110.5
 I-PSG
 Chan 42

LEVEL ISLAND
 116.5 LVD
 Chan 112



TAKEOFF MINIMUMS

- Rwy 5: Standard with minimum climb of 340' per NM to 9000.
- Rwy 23: 6400-3 for climb in visual conditions.

TAKEOFF OBSTACLE NOTES

- Rwy 5: Multiple trees beginning 883' from DER, 560' left of centerline, up to 65' AGL/144' MSL.
 Multiple trees beginning 170' from DER, 353' right of centerline, up to 100' AGL/193' MSL.
 Navaid light 10' from DER, 55' left of centerline, 3' AGL/107' MSL.
 Navaid light 10' from DER, 55' right of centerline, 3' AGL/107' MSL.
- Rwy 23: Multiple trees beginning 896' from DER, 199' left of centerline, up to 58' AGL/177' MSL.
 Multiple trees beginning 532' from DER, 559' right of centerline, up to 122' AGL/240' MSL.
 Fence 801' from DER, 178' left of centerline, up to 8' AGL/146' MSL.

NOTE: Chart not to scale.

DEPARTURE ROUTE DESCRIPTION

TAKEOFF RUNWAY 5: Climbing left turn heading 300° to intercept I-PSG LDA north course (344°) to JERDU/I-PSG 22 DME, then on LVD 42 DME Arc CCW to ZARUT/LVD 42 DME, thence. . . .

TAKEOFF RUNWAY 23: Obtain ATC approval for VCOA when requesting IFR clearance. Climb in visual conditions to cross Petersburg James A Johnson Airport at or above 6400 before proceeding on course. When executing VCOA, thence. . . .

. . . . climb to MEA for direction of flight. Expect filed altitude 10 minutes after departure.