

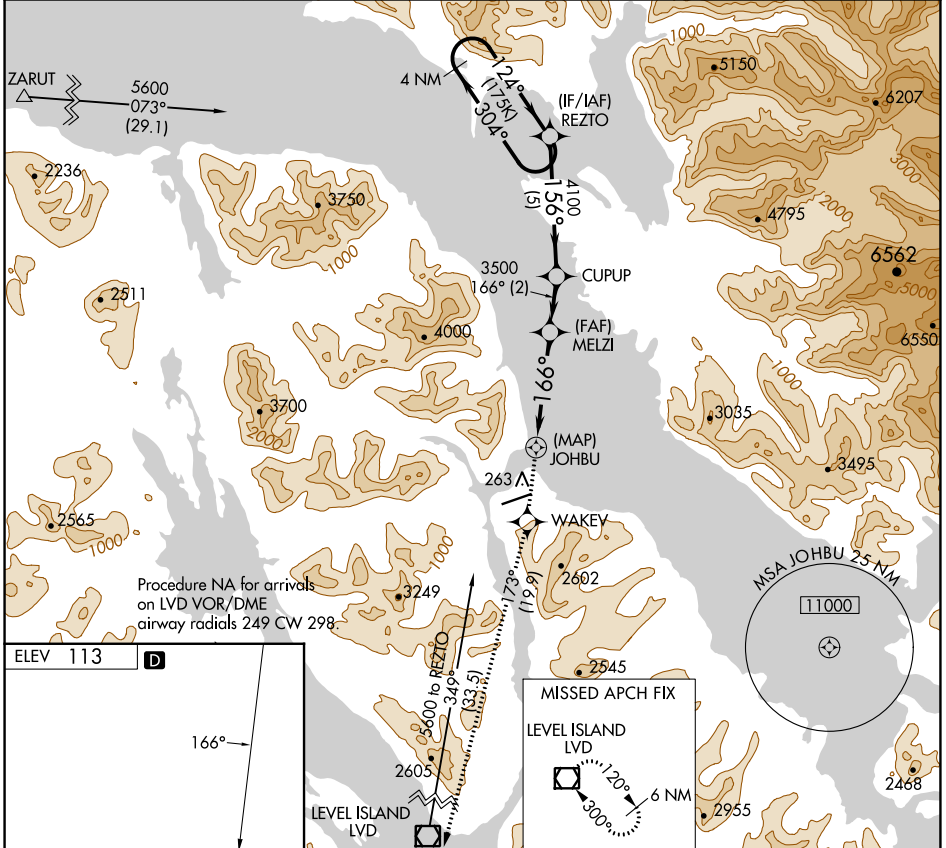
APP CRS	Rwy Idg	N/A
166°	TDZE	N/A
	Apt Elev	113

RNAV (GPS)-B

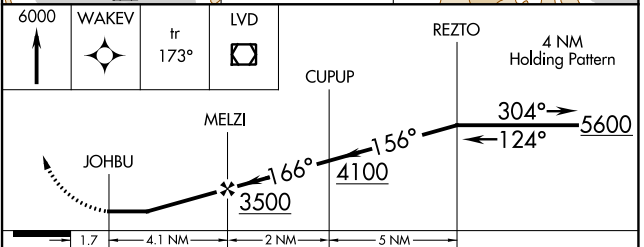
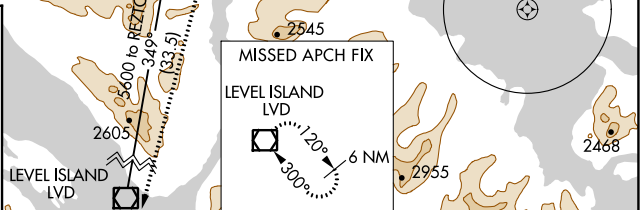
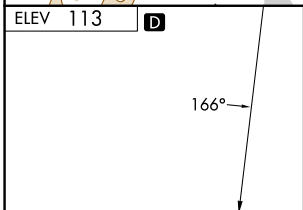
PETERSBURG JAMES A JOHNSON (PSG) (PAPG)

	When local altimeter setting not received, use Wrangell altimeter setting and increase all MDA 80 feet. Circling NA southeast of Rwy 5-23. DME/DME RNP-0.3 NA.	MISSED APPROACH: Climb to 6000 direct WAKEV and on track 173° to LVD VOR/DME and hold, continue climb-in-hold to 6000.
--	--	--

AWOS-3P 125.8	ANCHORAGE CENTER 118.0	SITKA RADIO 122.35	CTAF 122.5
-------------------------	----------------------------------	------------------------------	----------------------



Procedure NA for arrivals on LVD VOR/DME airway radials 249 CW 298.



HIRL Rwy 5-23	REIL Rwy 5	CATEGORY	A	B	C	D
		CIRCLING	2460-2	2347 (2400-2)	3080-3 2967 (3000-3)	NA

AK, 26 DEC 2024 to 20 FEB 2025

AK, 26 DEC 2024 to 20 FEB 2025