

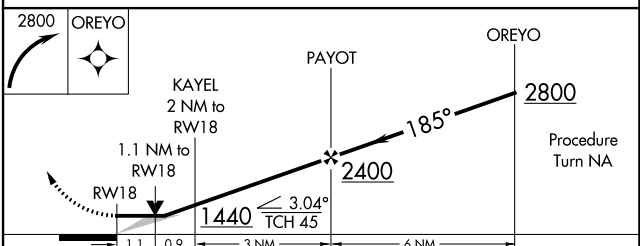
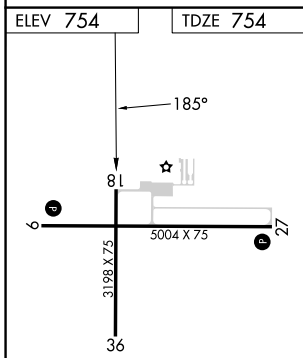
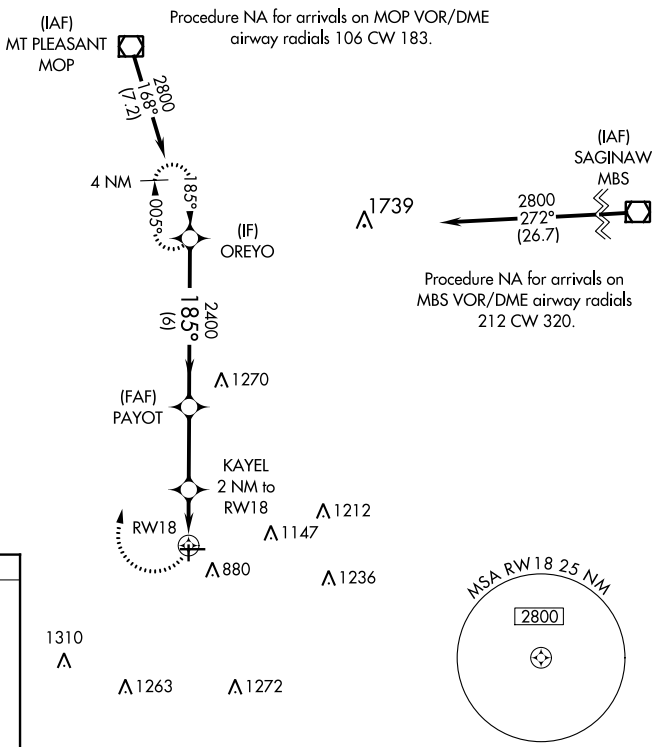
APP CRS 185°	Rwy Idg TDZE Apt Elev	3198 754 754
------------------------	-----------------------------	---

RNAV (GPS) RWY 18

GRATIOT COMMUNITY (A.MN)

RNP APCH.	MISSED APPROACH: Climbing right turn to 2800 direct OREYO WP and hold.
▼ ▲ NA	Procedure NA at night.

AWOS-3P 124.175	GREAT LAKES APP CON* 126.45 235.625	UNICOM 122.8 (CTAF) 0
---------------------------	---	---------------------------------



REIL Rwy 9 and 27 MIRL Rwy 9-27 and 18-36	CATEGORY	A	B	C	D
	LNAV MDA	1160-1	406 (500-1)	1160-1¼ 406 (500-1¼)	NA

EC-1, 26 DEC 2024 to 23 JAN 2025

EC-1, 26 DEC 2024 to 23 JAN 2025