

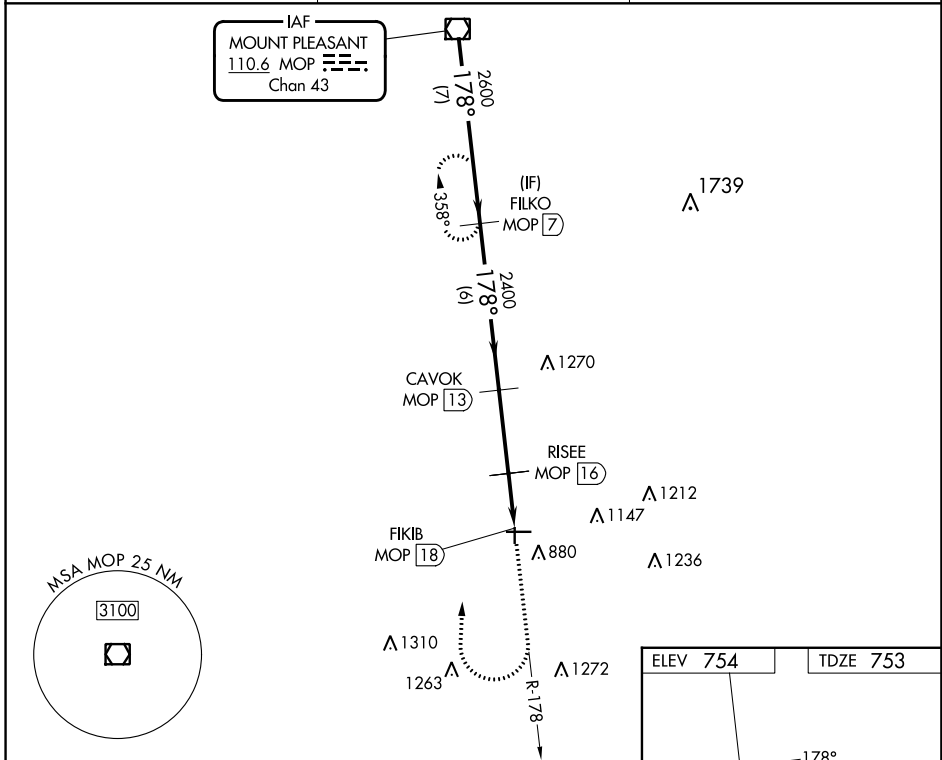
VOR/DME MOP 110.6 Chan 43	APP CRS 178°	Rwy ldg 3198 TDZE 753 Apt Elev 754
---	------------------------	---

VOR RWY 18
GRATIOT COMMUNITY (AMN)

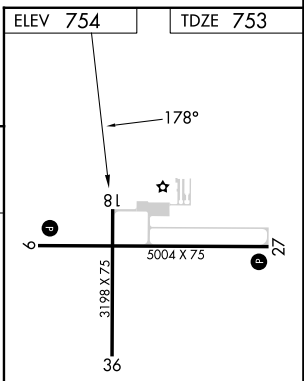
⚠ NA Night landing: Rwy 18, 36 NA. DME required. Straight-in Rwy 18 NA at night, Circling Rwy 18, 36 NA at night. Rwy 18 helicopter visibility reduction below 1 SM NA.

MISSED APPROACH: Climb to 2600 then climbing right turn to 2600 on MOP VOR/DME R-178 direct FILKO/MOP VOR/DME 7 DME and hold.

AWOS-3P 124.175	GREAT LAKES APP CON* 126.45 235.625	UNICOM 122.8 (CTAF) 0
---------------------------	---	---------------------------------



	MOP VOR/DME 3000	FILKO MOP 7 2600	CAVOK MOP 13 2400	RISEE MOP 16 2400	FIKIB MOP 18 2400
	7 NM	6 NM	3 NM	2 NM	
CATEGORY	A	B	C	D	
S-18	1140-1	387 (400-1)	1140-1¼ 387 (400-1¼)	NA	
CIRCLING	1180-1 426 (500-1)	1220-1 466 (500-1)	1460-2 706 (800-2)	NA	



EC-1, 26 DEC 2024 to 23 JAN 2025

EC-1, 26 DEC 2024 to 23 JAN 2025