

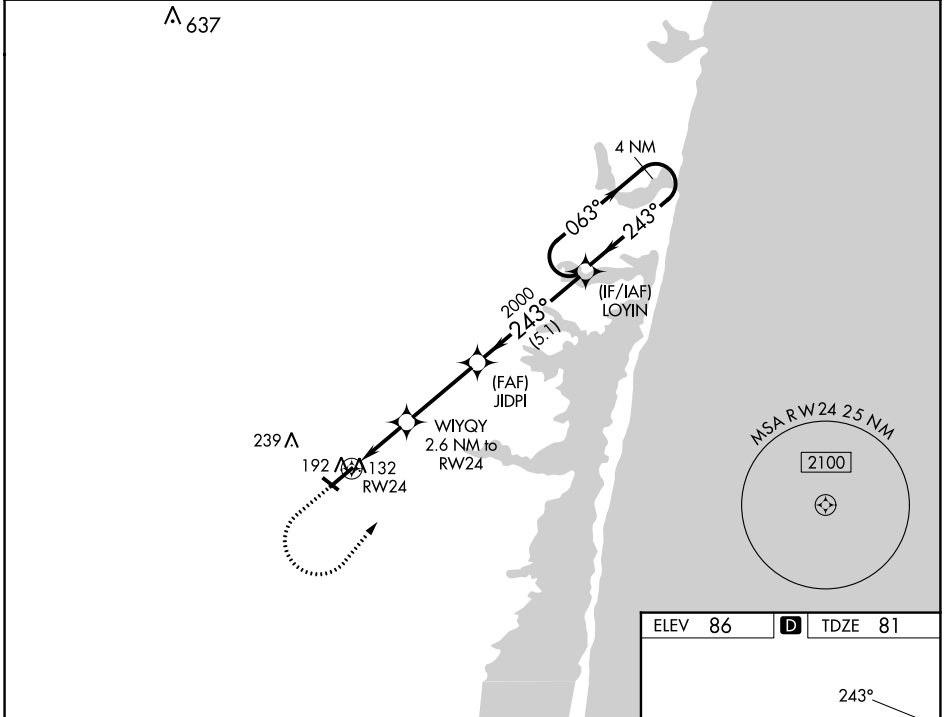
WAAS CH <b>86433</b> <b>W24A</b>	APP CRS <b>243°</b>	Rwy Idg TDZE Apt Elev	<b>5835</b> <b>81</b> <b>86</b>
--	------------------------	-----------------------------	---------------------------------------

# RNAV (GPS) RWY 24

OCEAN COUNTY (MJX)

RNP APCH - GPS.	MISSED APPROACH: Climb to 600 then climbing left turn to 2000 direct to LOYIN and hold.
-----------------	---

AWOS-3PT <b>119.875</b>	MC GUIRE APP CON <b>126.475 363.8</b>	UNICOM <b>122.7 (CTAF)</b>
----------------------------	--	-------------------------------



600 2000 LOYIN VGSI and RNAV glidepath not coincident (VGSI Angle 3.00/TCH 55).

WYQY 2.6 NM to RWY 24

JIDPI 2000

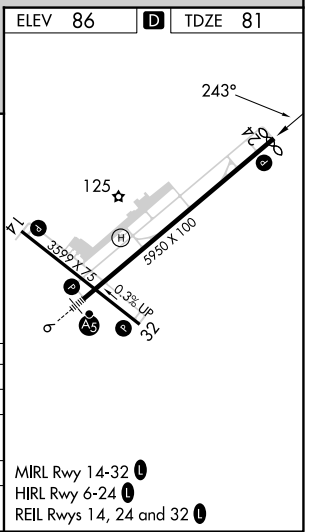
LOYIN 4 NM Holding Pattern

243° 063° 2000

940 2000 GP 3.00° TCH 40

1.1 NM to RWY 24 1.5 NM 3.3 NM 5.1 NM

CATEGORY	A	B	C	D
LPV DA		331-3/4	250 (300-3/4)	
LNAV/VNAV DA		358-7/8	277 (300-7/8)	
LNAV MDA		460-1	379 (400-1)	
CIRCLING	540-1	560-1	580-1 1/2	700-2
	454 (500-1)	474 (500-1)	494 (500-1 1/2)	614 (700-2)



NE-2, 26 DEC 2024 to 23 JAN 2025

NE-2, 26 DEC 2024 to 23 JAN 2025