

APP CRS	Rwy Idg	4002
076°	TDZE	1228
	Apt Elev	1228

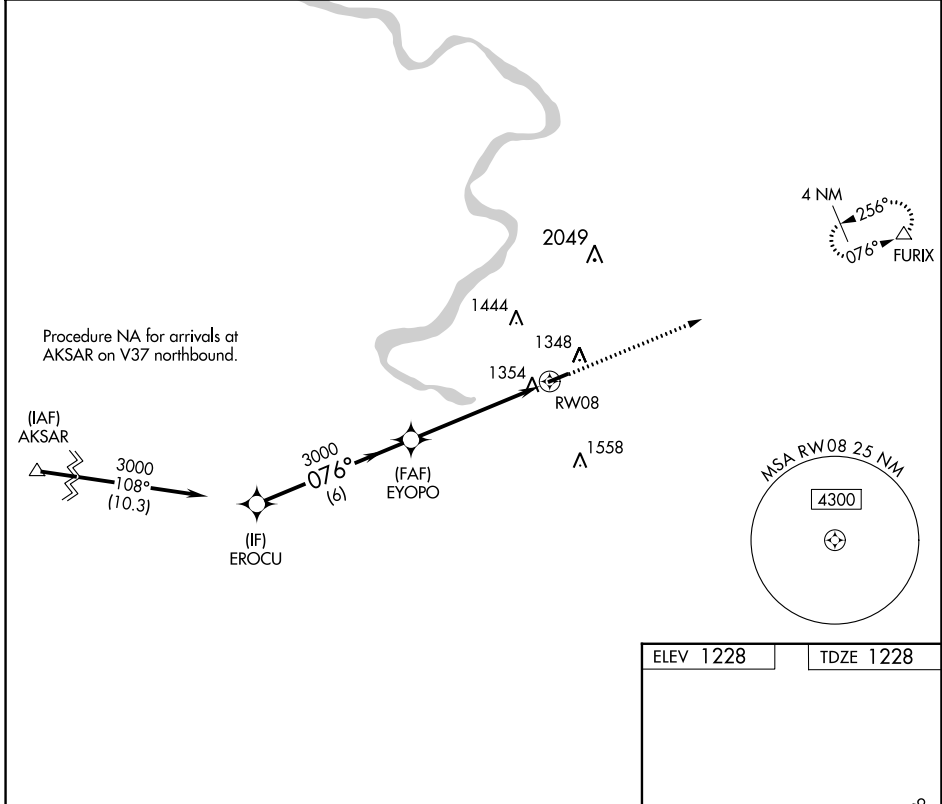
RNAV (GPS) RWY 8

ROSTRAVER (FWQ)

▼ When VGSI inop, Straight-in/Circling Rwy 8 procedure NA at night. DME/DME RNP-0.3 NA. When local altimeter setting not received, use Allegheny County altimeter setting and increase all MDA 40 feet; increase LNAV Cats C/D visibility 1/8 mile. Rwy 8 helicopter visibility reduction below 1 SM NA. Rwy 26 helicopter visibility reduction below 3/4 SM NA.

MISSED APPROACH:
Climb to 3700 direct FURIX and hold.

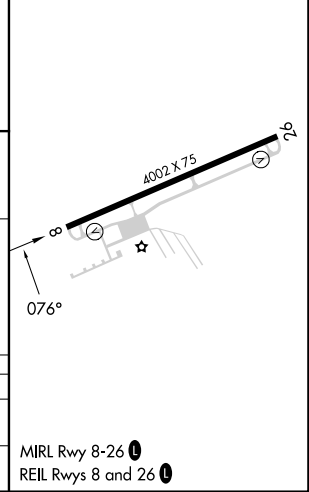
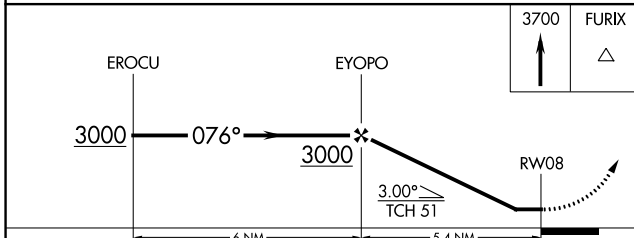
AWOS-3 118.475	PITTSBURGH APP CON 119.35 337.4	UNICOM 122.8 (CTAF) 0
--------------------------	---	---------------------------------



NE-4, 26 DEC 2024 to 23 JAN 2025

NE-4, 26 DEC 2024 to 23 JAN 2025

ELEV 1228	TDZE 1228
-----------	-----------



CATEGORY	A	B	C	D
LNAV MDA	1720-1	492 (500-1)	1720-1 ³ / ₈	492 (500-1 ³ / ₈)
CIRCLING	1720-1 492 (500-1)	1760-1 532 (600-1)	1760-1 ¹ / ₂ 532 (600-1 ¹ / ₂)	1920-2 ¹ / ₄ 692 (700-2 ¹ / ₄)