

APP CRS	Rwy Idg	<b>5320</b>
<b>038°</b>	TDZE	<b>161</b>
	Apt Elev	<b>163</b>

# RNAV (GPS) RWY 4

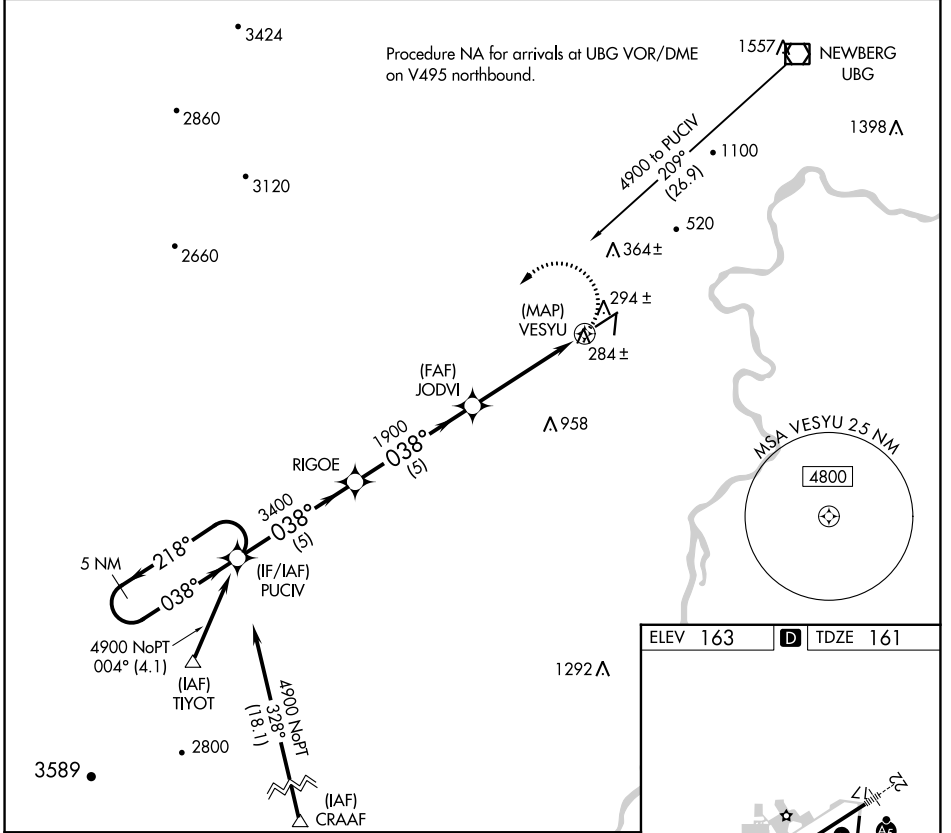
MC MINNVILLE MUNI (MMV)

RNP APCH.

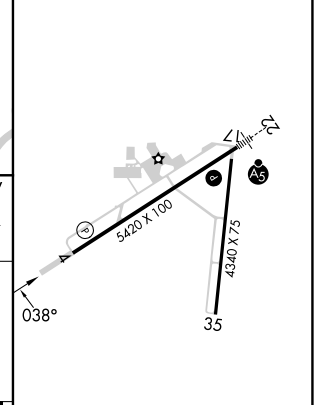
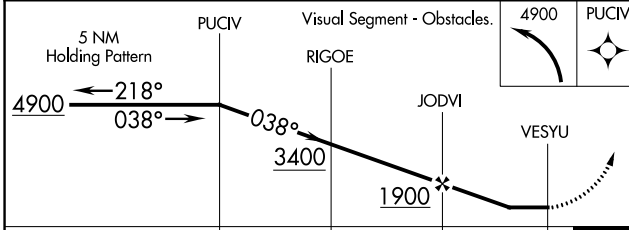
▼ When local altimeter setting not received, use Aurora State altimeter setting and increase all MDA 60 feet and visibility Cts C/D to 1 $\frac{1}{2}$ .  
 ▲ Rwy 4 helicopter visibility reduction below  $\frac{3}{4}$  SM NA.

MISSED APPROACH: Climbing left turn to 4900 direct PUCIV and hold, continue climb-in-hold to 4900.

ASOS <b>135.675</b>	PORTLAND APP CON <b>126.0 284.6 (NORTH)</b>	SEATTLE CENTER <b>125.8 291.7 (SOUTH)</b>	CLNC DEL <b>118.35</b>	UNICOM <b>123.0 (CTAF) 0</b>
------------------------	--	--	---------------------------	---------------------------------



ELEV 163	<b>D</b> TDZE 161
----------	-------------------



CATEGORY	A	B	C	D
LNAV MDA	600-1	439 (500-1)	600-1 $\frac{1}{4}$	439 (500-1 $\frac{1}{4}$ )

REIL Rwy 4 0  
 HIRL Rwy 4-22 0

NW-1, 26 DEC 2024 to 23 JAN 2025

NW-1, 26 DEC 2024 to 23 JAN 2025