

WAAS CH <b>86801</b> <b>W03A</b>	APP CRS <b>026°</b>	Rwy Idg <b>5502</b> TDZE <b>315</b> Apt Elev <b>315</b>
--	------------------------	---

# RNAV (GPS) RWY 3

SIKESTON MEML MUNI (SIK)

RNP APCH.

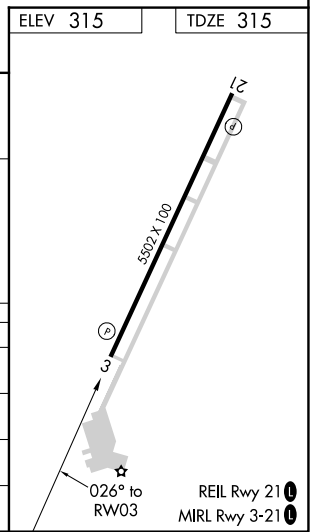
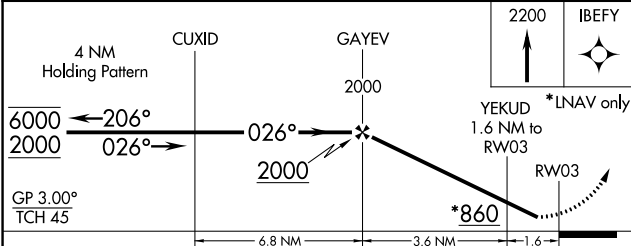
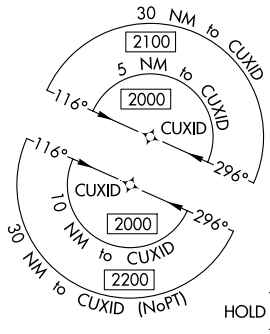
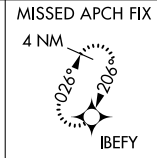
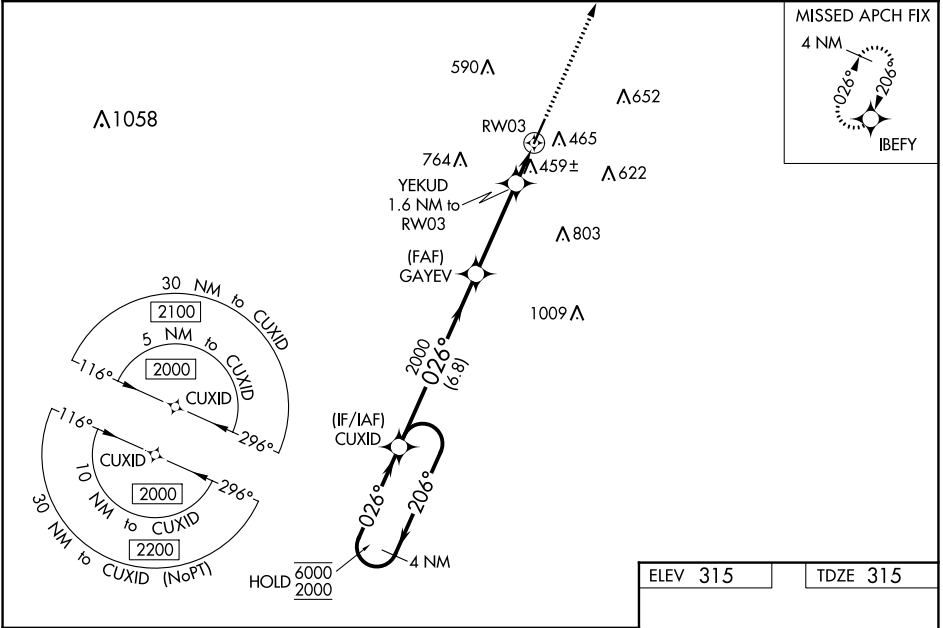
**▽** Rwy 3 helicopter visibility reduction below  $\frac{3}{4}$  SM NA. Baro-VNAV NA when using Cape Girardeau altimeter setting. For uncompensated Baro-VNAV systems, procedure NA below  $-1.5^{\circ}\text{C}$  or above  $54^{\circ}\text{C}$ . When local altimeter setting not received, use Cape Girardeau altimeter setting and increase all DA 49 feet and all MDA 60 feet. Increase LNAV and Circling Cat C/D visibility  $\frac{1}{4}$  SM.

MISSED APPROACH: Climb to 2200 direct IBEFY and hold.

AWOS-3  
**119.175**

MEMPHIS CENTER  
**133.65 292.15**

UNICOM  
**122.8 (CTAF)**



CATEGORY	A	B	C	D
LPV DA	629-1 314 (400-1)			
LNAV/VNAV DA	769-1 $\frac{3}{8}$ 454 (500-1 $\frac{1}{2}$ )			
LNAV MDA	720-1	405 (500-1)	720-1 $\frac{1}{8}$	405 (500-1 $\frac{1}{2}$ )
<b>C</b> CIRCLING	840-1 525 (600-1)	860-1 545 (600-1)	1080-2 $\frac{1}{4}$ 765 (800-2 $\frac{1}{4}$ )	1160-2 $\frac{3}{4}$ 845 (900-2 $\frac{3}{4}$ )

NC-3, 26 DEC 2024 to 23 JAN 2025

NC-3, 26 DEC 2024 to 23 JAN 2025