

VOR/DME DTL 111.2 Chan 49	APP CRS 314°	Rwy Idg TDZE 1372 Apt Elev 1396	5201
---	------------------------	---	-------------

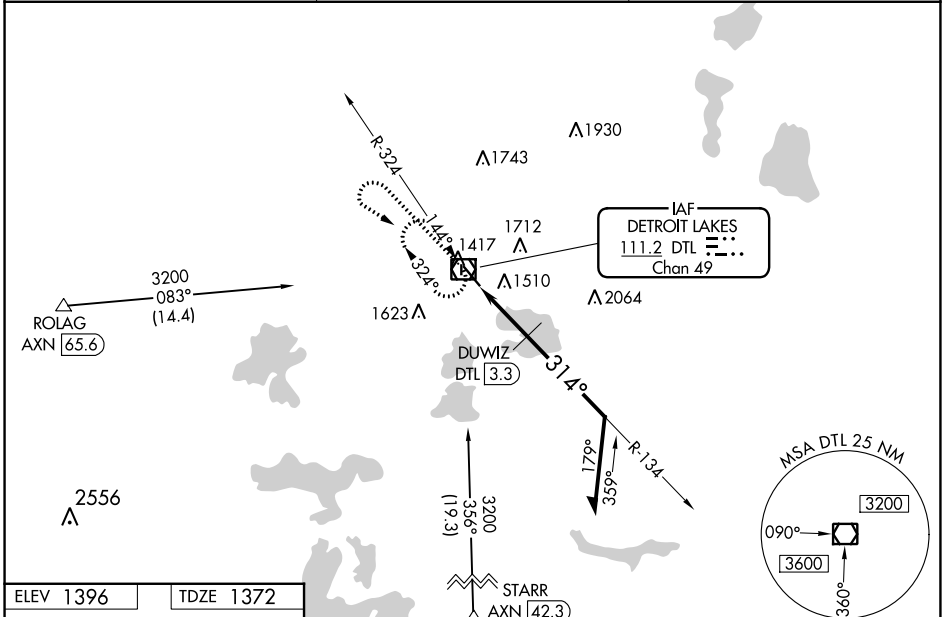
VOR RWY 32

DETROIT LAKES/WETHING FLD (DTL)

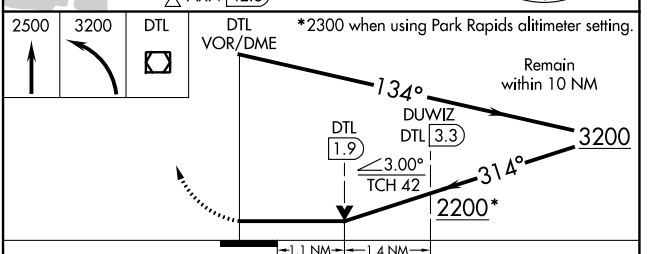
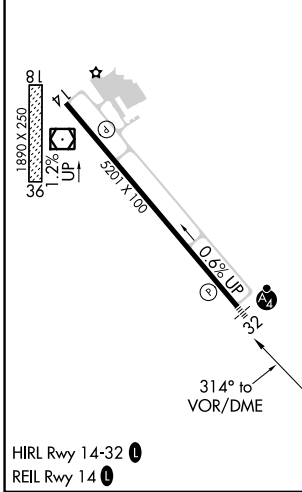
NA Circling NA to Rwy 18 and 36. VDP NA with Park Rapids altimeter setting. When local altimeter setting not received, use Park Rapids altimeter setting and increase all MDA 100 feet and visibility Cat A ¼ SM, Cats C and D ½ SM and Circling Cats A and C ¼ SM, Cat D ½ SM. DUWIZ fix minimums: increase visibility Cats C and D ¼ SM. For inop ALS, increase S-32 Cats C and D visibility to 2½ SM. Inop table does not apply to S-32 Cats C and D when using Park Rapids altimeter setting.

MALSF
MISSED APPROACH: Climb to 2500 then climbing left turn to 3200 direct DTL VOR/DME and hold, continue climb-in-hold 3200.

AWOS-3PT 119.075	MINNEAPOLIS CENTER 126.1 269.2	UNICOM 122.8 (CTAF)
----------------------------	--	-------------------------------



ELEV 1396	TDZE 1372
-----------	-----------



CATEGORY	A	B	C	D
S-32	2200-¾ 828 (900-¾)	2200-1 828 (900-1)	2200-2	828 (900-2)
C CIRCLING	2200-1 804 (900-1)	2200-1¼ 804 (900-1¼)	2200-2½	804 (900-2½)
DUWIZ FIX MINIMUMS				
S-32	1760-¾ 388 (400-¾)	1760-7/8	388 (400-7/8)	
C CIRCLING	1820-1 424 (500-1)	1860-1 464 (500-1)	2080-2 684 (700-2)	2140-2½ 744 (800-2½)

NC-1, 26 DEC 2024 to 23 JAN 2025

NC-1, 26 DEC 2024 to 23 JAN 2025