

APP CRS	Rwy Idg	3889
167°	TDZE	1165
	Apt Elev	1165

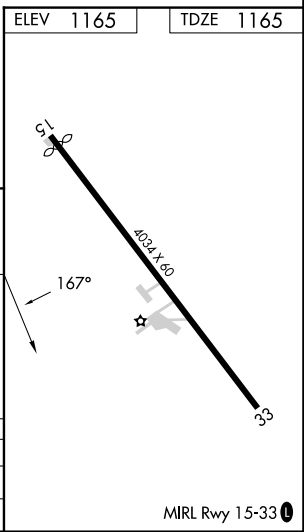
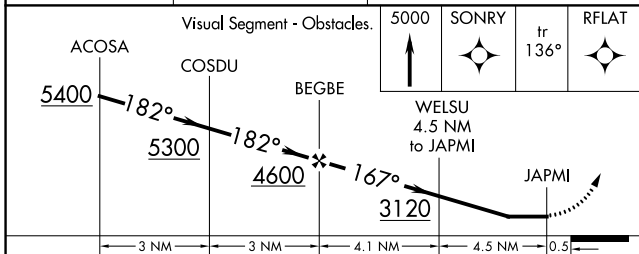
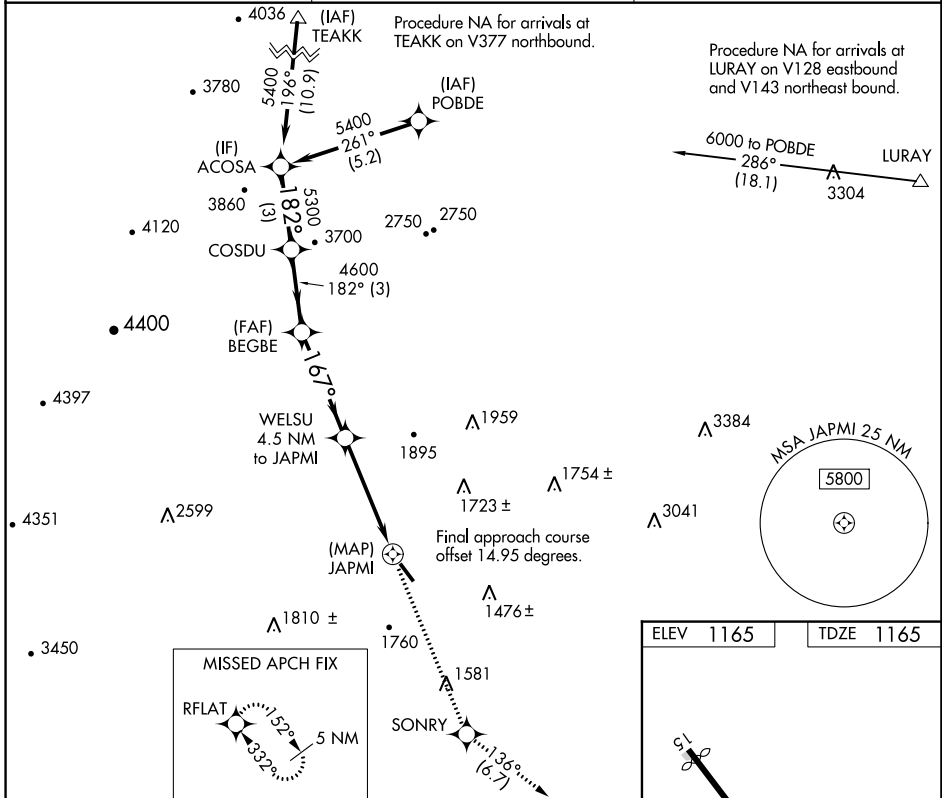
RNAV (GPS) RWY 15

BRIDGEWATER AIR PARK (VBW)

NA DME/DME RNP-0.3 NA. Helicopter visibility reduction below 3/4 SM NA. When local altimeter setting not received, use Staunton/Waynesboro/Harrisonburg altimeter setting and increase all MDA 40 feet and visibility Cat B 1/4 mile.

MISSED APPROACH: Climb to 5000 direct SONRY and on track 136° to RFLAT and hold, continue climb-in-hold to 5000.

AWOS-3 119.55	POTOMAC APP CON 132.85 323.125	UNICOM 122.7 (CTAF) 0
-------------------------	--	---------------------------------



CATEGORY	A	B	C	D
RNAV MDA	2080-1 1/4	915 (1000-1 1/4)	NA	NA
CIRCLING	2080-1 1/4	915 (1000-1 1/4)	NA	NA

NE-3, 26 DEC 2024 to 23 JAN 2025

NE-3, 26 DEC 2024 to 23 JAN 2025