

(HHOWE4.HHOWE) 24137

# HHOWE FOUR DEPARTURE (RNAV) AL-5642 (FAA)

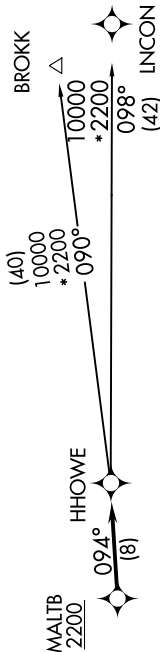
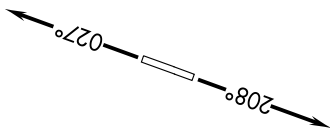
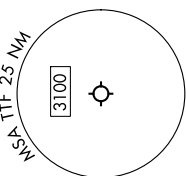
CUSTER (TTF)  
MONROE, MICHIGAN

EC-1, 26 DEC 2024 to 23 JAN 2025

**TOP ALTITUDE:  
ASSIGNED BY ATC**

RNAV-1 DME/DME/IRU or GPS.  
RADAR required.

DETROIT DEP CON  
134.3 284.0  
AWOS-3  
119.075  
CTAF  
122.7



NOTE: Turbojet departures at/above 10000, maintain 280K until advised by ATC.  
NOTE: BROKK TRANSITION: For use by flights filed at or below FL270, or as assigned by ATC.

TAKEOFF MINIMUMS:  
Rwy 3, 21: Standard.

NOTE: Chart not to scale.

## DEPARTURE ROUTE DESCRIPTION

**TAKEOFF RUNWAY 3:** Climb on heading 027° or as assigned by ATC, thence....  
**TAKEOFF RUNWAY 21:** Climb on heading 208° or as assigned by ATC, thence....

....for RADAR vectors to cross MALTB at or above 2200, then on track 094° to HHOWE, then on (transition).  
Maintain ATC assigned altitude, expect filed altitude 10 minutes after departure.

**BROKK TRANSITION (HHOWE4, BROKK):**  
**LINCON TRANSITION (HHOWE4, LINCON):**

HHOWE FOUR DEPARTURE (RNAV)  
(HHOWE4.HHOWE) 16MAY24

MONROE, MICHIGAN  
CUSTER (TTF)

EC-1, 26 DEC 2024 to 23 JAN 2025