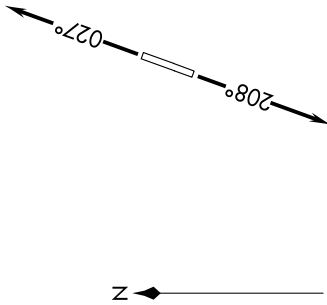


EC-1, 26 DEC 2024 to 23 JAN 2025

DETROIT DEP CON
134.3 284.0
AWOS-3
119.075
CTAF
122.7

RNAV 1 - DME/DME/IRU or GPS.
RADAR required.

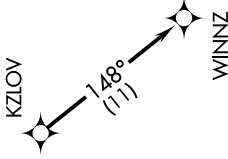
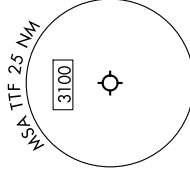
TOP ALTITUDE:
ASSIGNED BY ATC



TAKEOFF MINIMUMS:
Rwy 3, 21: Standard.

NOTE: Turbojet departures at/above 10000,
maintain 280K until advised by ATC.

NOTE: For use by Cleveland terminal arrivals only.



NOTE: Chart not to scale.

DEPARTURE ROUTE DESCRIPTION

TAKEOFF RUNWAY 3: Climb on heading 027° or as assigned by ATC, thence....
TAKEOFF RUNWAY 21: Climb on heading 208° or as assigned by ATC, thence....

....for RADAR vectors to KZLOV, then on track 148° to WINNZ. Maintain ATC assigned altitude, expect filed altitude ten minutes after departure.

EC-1, 26 DEC 2024 to 23 JAN 2025