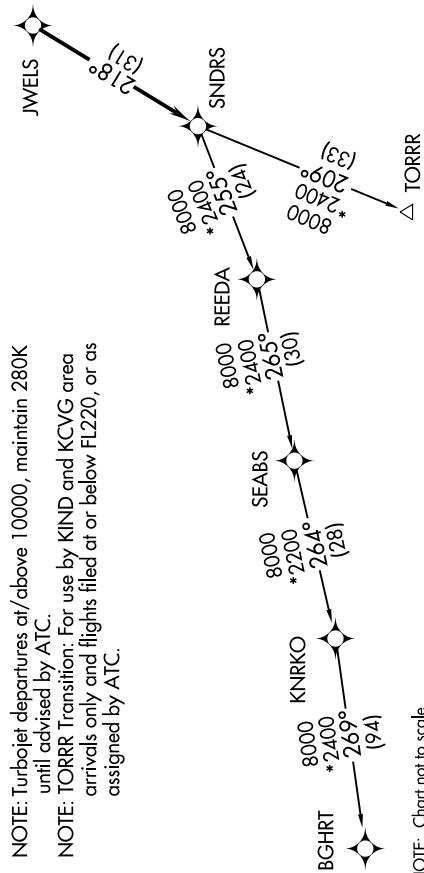


EC-1, 26 DEC 2024 to 23 JAN 2025

<p>DEPARTURE ROUTE DESCRIPTION</p> <p>TAKEOFF RUNWAY 3: Climb on heading 027° or as assigned by ATC, thence....</p> <p>TAKEOFF RUNWAY 21: Climb on heading 208° or as assigned by ATC, thence....</p> <p>....for RADAR vectors to JWELS, then on track 218° to SNDRS, then on (transition). Maintain ATC assigned altitude, expect filed altitude 10 minutes after departure.</p> <p>BGHR T TRANSITION (SNDRS3.BGHR T): <u>TORR T TRANSITION (SNDRS3.TORR T):</u></p>	<p>TOP ALTITUDE: ASSIGNED BY ATC</p> <table border="1" style="width: 100%; border-collapse: collapse;"> <tr> <td style="width: 50%;">RNAV-1 DME/DME/IRU or GPS.</td> </tr> <tr> <td>RADAR required.</td> </tr> </table> <p style="text-align: center;">N</p>	RNAV-1 DME/DME/IRU or GPS.	RADAR required.
RNAV-1 DME/DME/IRU or GPS.			
RADAR required.			

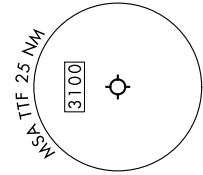
NOTE: Turbojet departures at/above 10000, maintain 280K until advised by ATC.

NOTE: TORR T Transition: For use by KIND and KCVG area arrivals only and flights filed at or below FL220, or as assigned by ATC.



DETROIT DEP CON
134.3 284.0
AWOS-3
119.075
CTAF
122.7

TAKEOFF MINIMUMS:
Rwys 3, 21: Standard.



NOTE: Chart not to scale.

EC-1, 26 DEC 2024 to 23 JAN 2025