

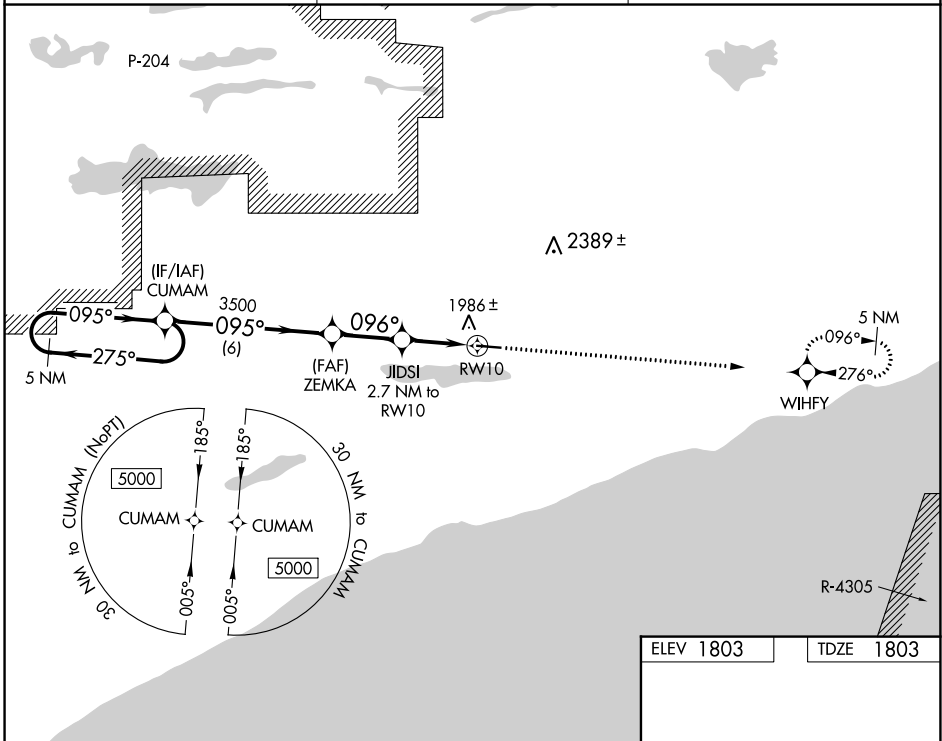
WAAS CH 45920 W10A	APP CRS 096°	Rwy Idg TDZE Apt Elev	5002 1803 1803
--	------------------------	-----------------------------	---

RNAV (GPS) RWY 10

GRAND MARAIS/COOK COUNTY (CKC)

RNP APCH.	MISSED APPROACH: Climb to 7000 direct WIHFY and hold, continue climb-in-hold to 7000.
<p>▼ Rwy 10 helicopter visibility reduction below 1 SM NA. ▲ Procedure NA at night.</p>	

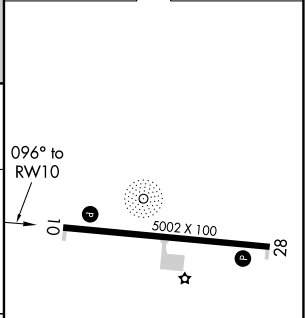
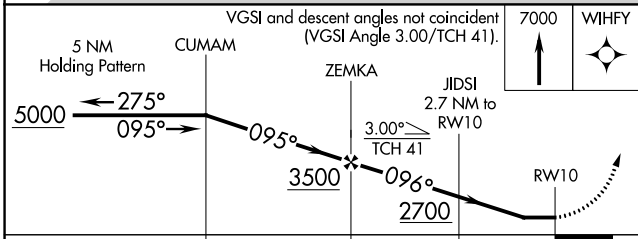
AWOS-3 119.925	MINNEAPOLIS CENTER 127.9 281.45	UNICOM 122.8 (CTAF) ①
--------------------------	---	---------------------------------



NC-1, 26 DEC 2024 to 23 JAN 2025

NC-1, 26 DEC 2024 to 23 JAN 2025

ELEV 1803	TDZE 1803
-----------	-----------



CATEGORY	A	B	C	D
LP MDA	2200-1	397 (400-1)	2200-1 $\frac{1}{8}$	397 (400-1 $\frac{1}{8}$)
RNAV MDA	2240-1	437 (500-1)	2240-1 $\frac{1}{4}$	437 (500-1 $\frac{1}{4}$)
C CIRCLING	2300-1	497 (500-1)	2380-1 $\frac{1}{2}$ 577 (600-1 $\frac{1}{2}$)	2640-2 $\frac{3}{4}$ 837 (900-2 $\frac{3}{4}$)

MIRL Rwy 10-28 ①
REIL Rwy 10 and 28 ①