

WAAS CH 53742 W17A	APP CRS 177°	Rwy Idg TDZE Apt Elev	3598 1411 1411
--	------------------------	-----------------------------	---

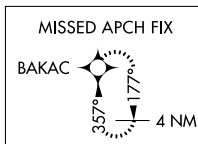
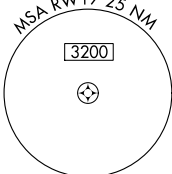
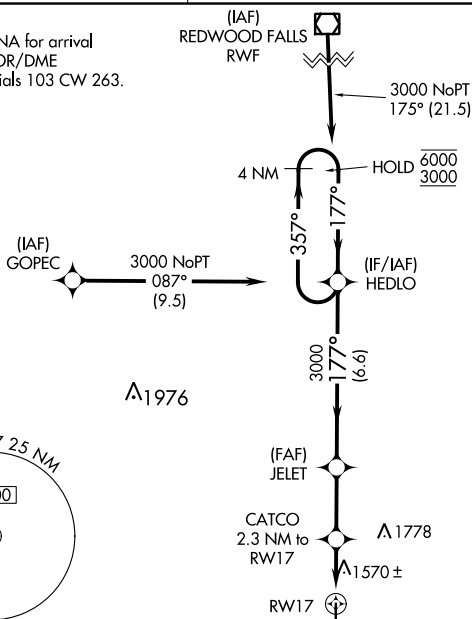
RNAV (GPS) RWY 17

WINDOM MUNI (MWM)

RNP APCH.	MISSED APPROACH: Climb to 3100 direct BAKAC and hold.
<p>▼ For uncompensated Baro-VNAV systems, LNAV/VNAV NA</p> <p>▲ below -17°C or above 54°C.</p>	

AWOS-3PT 119.325	MINNEAPOLIS CENTER 127.1 290.2	CTAF 122.9
----------------------------	--	----------------------

Procedure NA for arrival on RWF VOR/DME airway radials 103 CW 263.



ELEV 1411	TDZE 1411
-----------	-----------

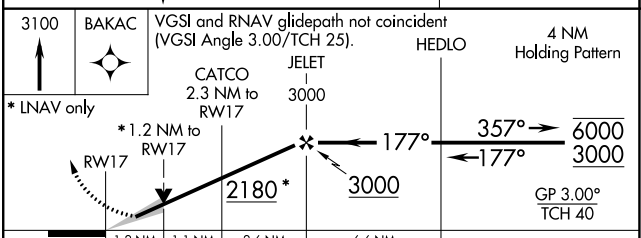
177°

3598 X 75

35

MIRL Rwy 17-35

REIL Rwy 17 and 35



CATEGORY	A	B	C	D
LPV DA	1661-1 250 (300-1)			NA
LNAV/VNAV DA	1858-1 ³ / ₈ 447 (500-1 ³ / ₈)			NA
LNAV MDA	1820-1	409 (500-1)	1820-1 ¹ / ₈ 409 (500-1 ¹ / ₈)	NA
<input checked="" type="checkbox"/> CIRCLING	1880-1 469 (500-1)	1900-1 489 (500-1)	1920-1 ¹ / ₂ 509 (600-1 ¹ / ₂)	NA

NC-1, 26 DEC 2024 to 23 JAN 2025

NC-1, 26 DEC 2024 to 23 JAN 2025