

APP CRS **173°**
 Rwy ldg **5000**
 TDZE **343**
 Apt Elev **343**

RNAV (GPS) RWY 18

NACOGDOCHES A L MANGHAM JR RGNL (OCH)

RNP APCH-GPS.

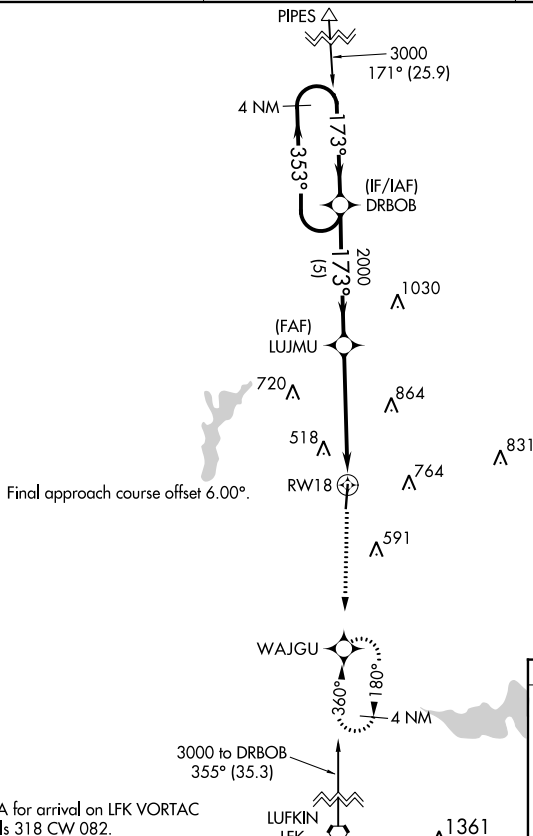
⚠ Rwy 18 helicopter visibility reduction below 1 SM NA. When local altimeter setting not received, use Lufkin altimeter setting and increase all MDA 60 feet and visibility LNAV Cat C and Circling Cat C ¼ SM.

MISSED APPROACH: Climb to 2400 direct WAJGU and hold.

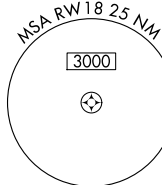
AWOS-3PT
135.625

HOUSTON CENTER
125.175 285.575

UNICOM
123.0(CTAF) 0

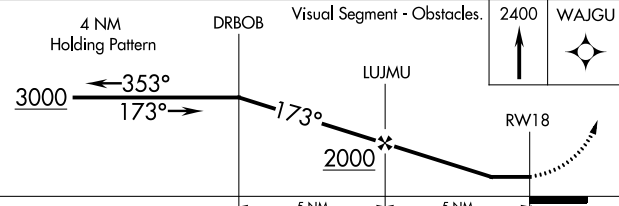
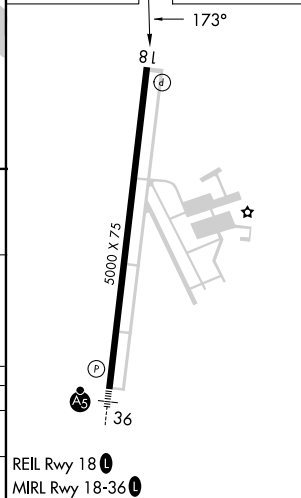


Final approach course offset 6.00°.



Procedure NA for arrival on LFK VORTAC airway radials 318 CW 082.

ELEV 343 | TDZE 343



CATEGORY	A	B	C	D
LNAV MDA	980-1	637 (700-1)	980-1¾ 637 (700-1¾)	NA
CIRCLING	980-1	637 (700-1)	1080-2 737 (800-2)	NA

RNAV (GPS) RWY 18

SC-5, 26 DEC 2024 to 23 JAN 2025

SC-5, 26 DEC 2024 to 23 JAN 2025