

WAAS CH <b>93528</b> <b>W36A</b>	APP CRS <b>359°</b>	Rwy Idg TDZE Apt Elev	<b>5000</b> <b>343</b> <b>343</b>
--	------------------------	-----------------------------	---

# RNAV (GPS) RWY 36

NACOGDOCHES A L MANGHAM JR RGNL (OCH)

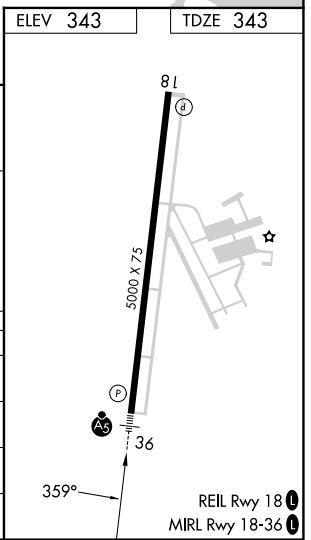
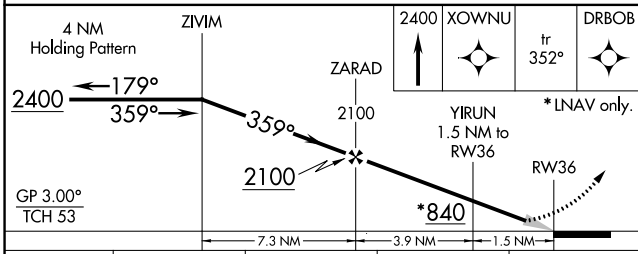
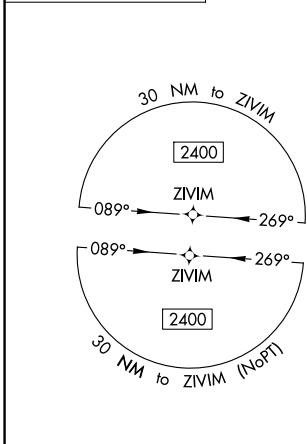
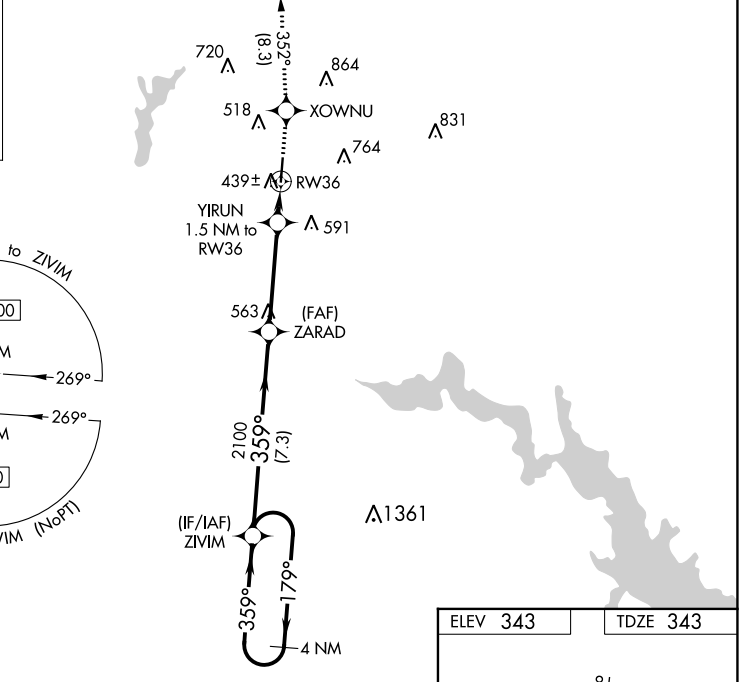
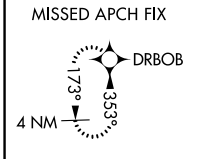
RNP APCH-GPS.

▼ Baro-VNAV NA when using Lufkin altimeter setting. For uncompensated Baro-VNAV systems, LNAV/VNAV NA below -15°C or above 54°C. When local altimeter setting not received, use Lufkin altimeter setting: increase LPV DA to 599 feet, LNAV/VNAV DA to 681 feet, and visibility LNAV/VNAV all Cats ½ SM, increase all MDA 60 feet and visibility LNAV Cat C ½ SM and Circling Cat C ½ SM.



MISSED APPROACH: Climb to 2400 direct XOWNU and on track 352° to DRBOB and hold.

AWOS-3PT <b>135.625</b>	HOUSTON CENTER <b>125.175 285.575</b>	UNICOM <b>123.0 (CTAF)</b>
----------------------------	--	-------------------------------



CATEGORY	A	B	C	D
LPV DA	543-½	200 (200-½)		NA
LNAV/VNAV DA	625-½	282 (300-½)		NA
LNAV MDA	700-½	357 (400-½)	700-⅝ 357 (400-⅝)	NA
CIRCLING	860-1	517 (600-1)	1080-2 737 (800-2)	NA

SC-5, 26 DEC 2024 to 23 JAN 2025

SC-5, 26 DEC 2024 to 23 JAN 2025