

LOC/DME I-UVM 111.3 Chan 50	APP CRS 305°	Rwy Idg 5002 TDZE 925 Apt Elev 941
---	------------------------	---

LOC RWY 31

BLUE RIDGE (MTV)

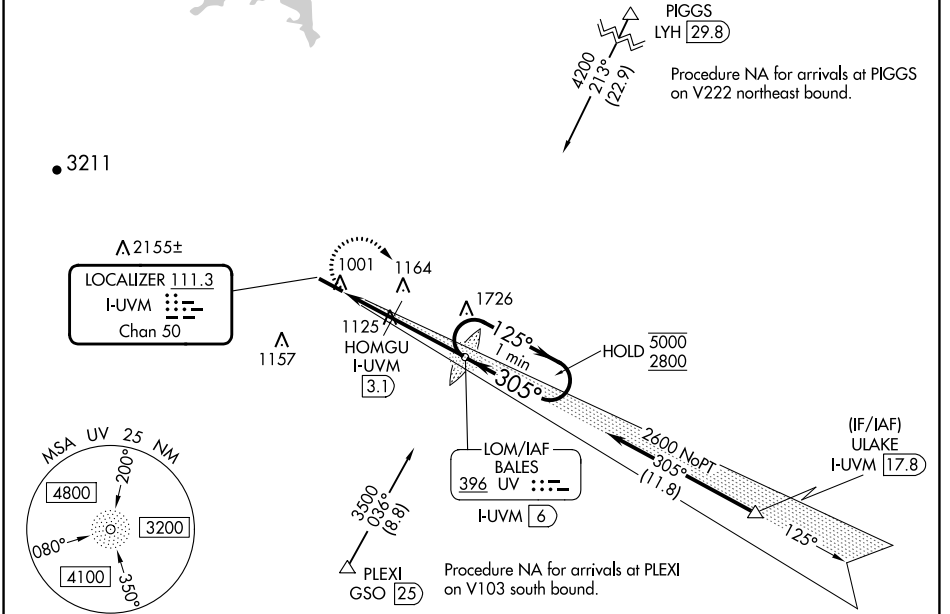
ADF or DME required for procedure entry. ADF required.

ODALS MISSED APPROACH: Climbing right turn to 2800 direct BALES LOM/I-UVM 6 DME and hold, continue climb in hold to 2800.

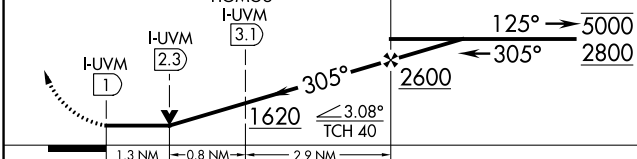
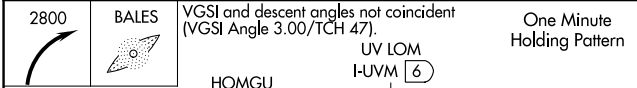
Rwy 31 helicopter visibility reduction below 3/4 SM NA. For inop ALS while using HOMGU fix minimums, increase Cat C/D visibility to 1 1/2 SM.

-17°C

AWOS-3 118.45	GREENSBORO APP CON 124.35 269.225	CLNC DEL 124.85	UNICOM 122.7 (CTAF)
-------------------------	---	---------------------------	-------------------------------



ELEV 941 TDZE 925



CATEGORY	A	B	C	D
S-31	1620-3/4	695 (700-3/4)	1620-1 1/8	695 (700-1 1/8)
C CIRCLING	1620-1	679 (700-1)	1620-2	1800-2 3/4
HOMGU FIX MINIMUMS				
S-31	1380-3/4	455 (500-3/4)	1380-1 1/8	455 (500-1 1/8)
C CIRCLING	1420-1	1440-1	1540-1 1/2	1800-2 3/4
	479 (500-1)	499 (500-1)	599 (600-1 1/2)	859 (900-2 3/4)

MIRL Rwy 13-31
REIL Rwys 13 and 31

FAF to MAP 5 NM

Knots	60	90	120	150	180
Min:Sec	5:00	3:20	2:30	2:00	1:40

NE-3, 26 DEC 2024 to 23 JAN 2025

NE-3, 26 DEC 2024 to 23 JAN 2025