

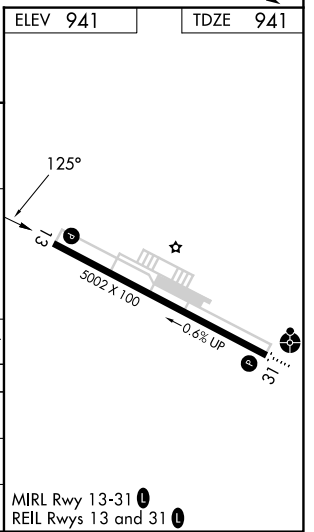
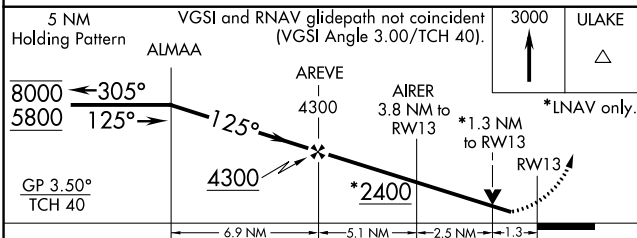
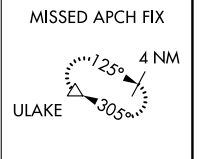
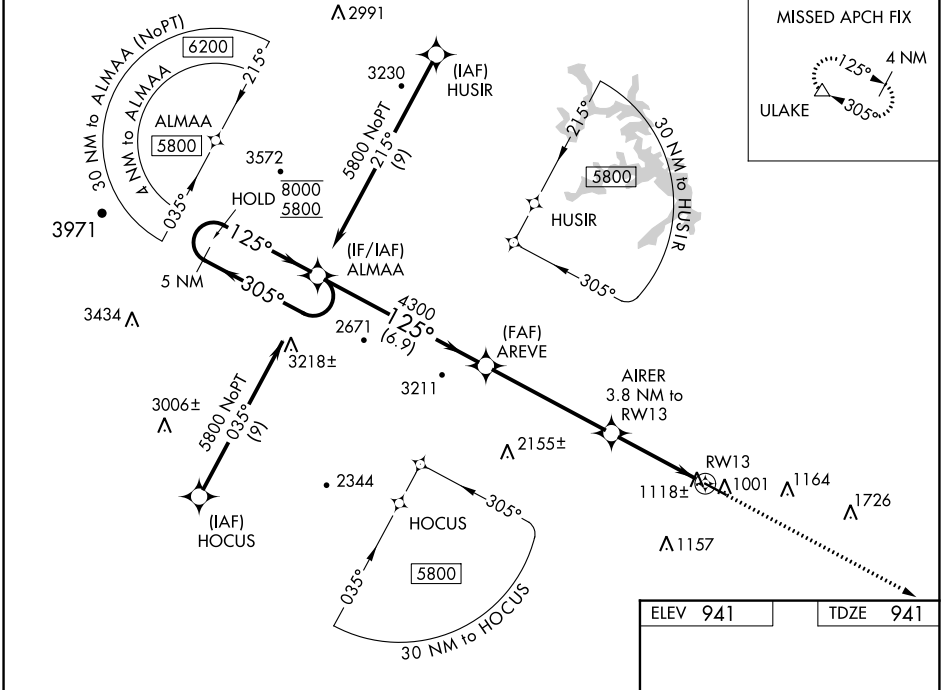
WAAS CH <b>50218</b> <b>W13A</b>	APP CRS <b>125°</b>	Rwy Idg TDZE Apt Elev	<b>5002</b> <b>941</b> <b>941</b>
--	------------------------	-----------------------------	---

# RNAV (GPS) RWY 13

BLUE RIDGE (MTV)

RNP APCH-GPS.		MISSED APPROACH: Climb to 3000 direct ULAKE and hold.
<p><b>⚠</b> Rwy 13 helicopter visibility reduction below 3/4 SM NA. For uncompensated Baro-VNAV systems, LNAV/VNAV NA below -1.6°C or above 4.6°C.</p> <p><b>❄</b> -17°C</p>		

AWOS-3 <b>118.45</b>	GREENSBORO APP CON <b>124.35 269.225</b>	CINC DEL <b>124.85</b>	UNICOM <b>122.7 (CTAF) 0</b>
-------------------------	---	---------------------------	---------------------------------



CATEGORY	A	B	C	D
LPV DA		1301-1	360 (400-1)	
LNAV/ VNAV DA		1324-1 1/8	383 (400-1 1/8)	
LNAV MDA	1380-1	439 (500-1)	1380-1 1/4	439 (500-1 1/4)
<b>C</b> CIRCLING	1420-1 479 (500-1)	1440-1 499 (500-1)	1540-1 1/2 599 (600-1 1/2)	1800-2 3/4 859 (900-2 3/4)

NE-3, 26 DEC 2024 to 23 JAN 2025

NE-3, 26 DEC 2024 to 23 JAN 2025