

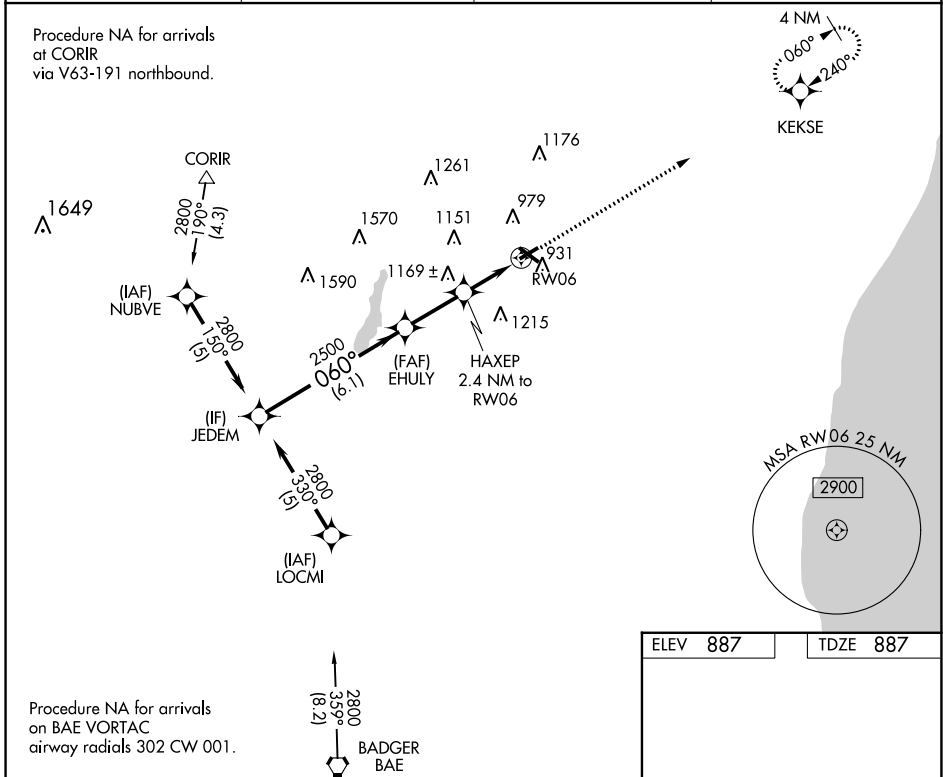
APP CRS 060°	Rwy Idg 3898
	TDZE 887
	Apt Elev 887

RNAV (GPS) RWY 6

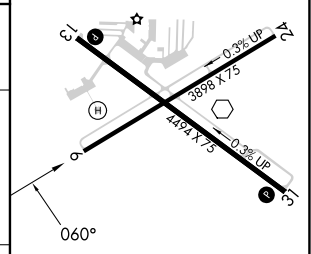
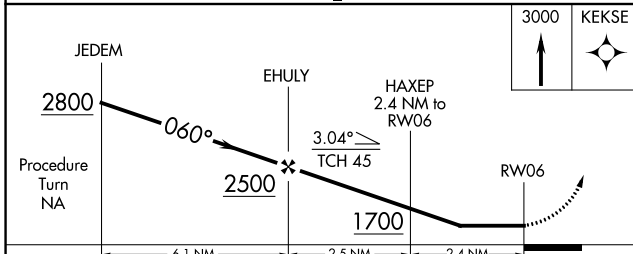
WEST BEND MUNI (ETB)

RNP APCH - GPS.		MISSED APPROACH: Climb to 3000 direct KEKSE and hold.
<p>▼ When local altimeter setting not received, use Milwaukee/Lawrence J. Timmerman altimeter setting and increase all MDA 80 feet and LNAV and Circling Cat C/D visibility ¼ mile.</p> <p>▲ Night landing: Rwy 6 NA. Helicopter visibility reduction below 1 SM NA.</p>		

AWOS-3 120.0	MILWAUKEE APP CON 125.35 307.0	CLNC DEL 124.75	UNICOM 123.05 (CTAF) ①
------------------------	--	---------------------------	----------------------------------



ELEV 887	TDZE 887
----------	----------



CATEGORY	A	B	C	D
LNAV MDA	1460-1 573 (600-1)	1460-1 5/8 573 (600-1 5/8)	1460-1 3/4 573 (600-1 3/4)	1460-1 3/4 573 (600-1 3/4)
CIRCLING	1460-1 573 (600-1)	1520-1 633 (700-1)	1560-2 673 (700-2)	1560-2 1/4 673 (700-2 1/4)

REIL Rwy 13 and 31 ①
MIRL Rwy 6-24 and 13-31 ①

EC-3, 26 DEC 2024 to 23 JAN 2025

EC-3, 26 DEC 2024 to 23 JAN 2025