

VOR BJB 109.8	APP CRS 232°	Rwy Idg 3898 TDZE 884 Apt Elev 887
-------------------------	------------------------	---

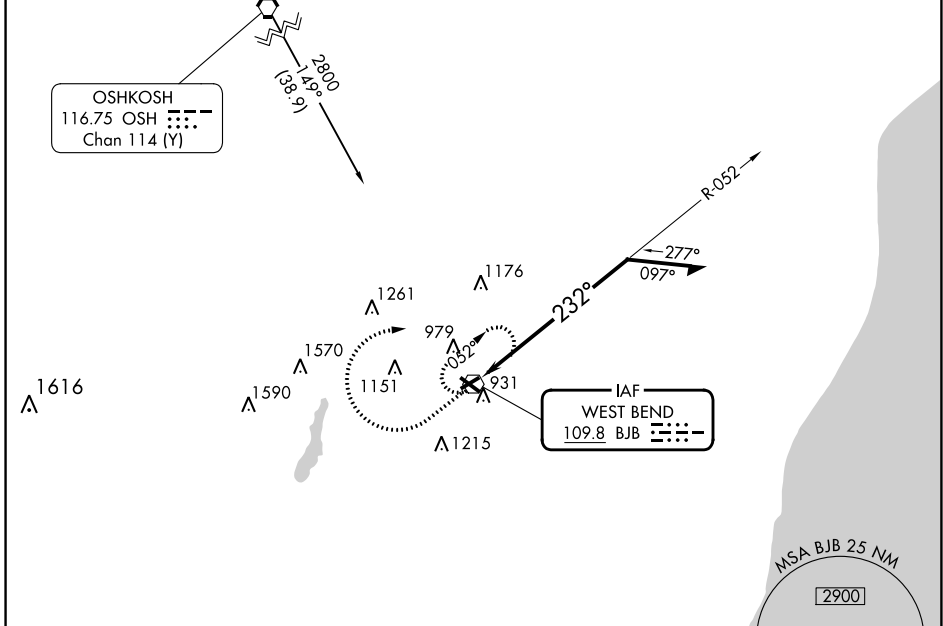
VOR RWY 24

WEST BEND MUNI (E/TB)

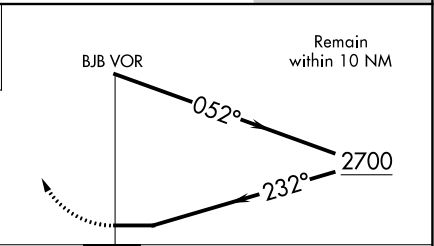
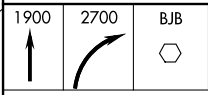
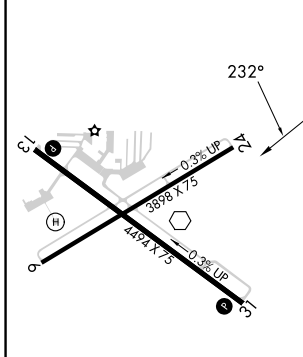
⚠ Helicopter visibility reduction below 1 SM NA. When local altimeter setting not received, use Milwaukee/Lawrence J Timmerman altimeter setting and increase all MDA 80 feet, increase all Cat C/D visibilities ¼ mile. Night landing: Rwy 6, 24 NA.

MISSED APPROACH: Climb to 1900 then climbing right turn 2700 direct BJB VOR and hold, continue climb-in-hold to 2700.

AWOS-3 120.0	MILWAUKEE APP CON 125.35 307.0	CLNC DEL 124.75	UNICOM 123.05 (CTAF) 0
------------------------	--	---------------------------	----------------------------------



ELEV 887	TDZE 884
-----------------	-----------------



CATEGORY	A	B	C	D
S-24	1500-1	616 (700-1)	1500-1¾ 616 (700-1¾)	1500-2 616 (700-2)
CIRCLING	1500-1 613 (700-1)	1520-1 633 (700-1)	1560-2 673 (700-2)	1560-2½ 673 (700-2½)

REIL Rwy 13 and 31 **0**
MIRL Rwy 6-24 and 13-31 **0**

EC-3, 26 DEC 2024 to 23 JAN 2025

EC-3, 26 DEC 2024 to 23 JAN 2025