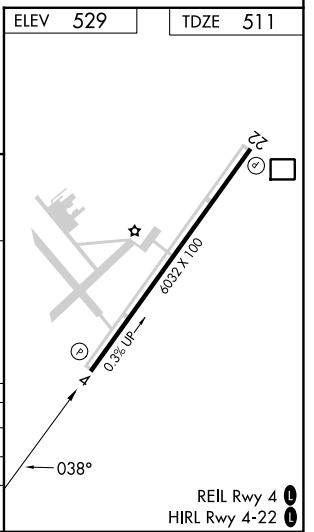
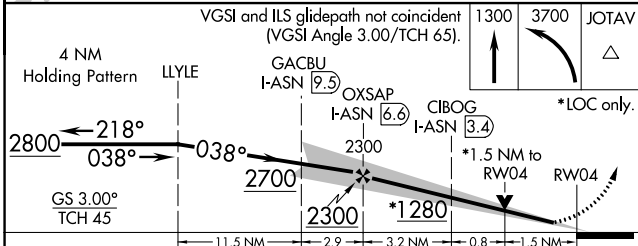
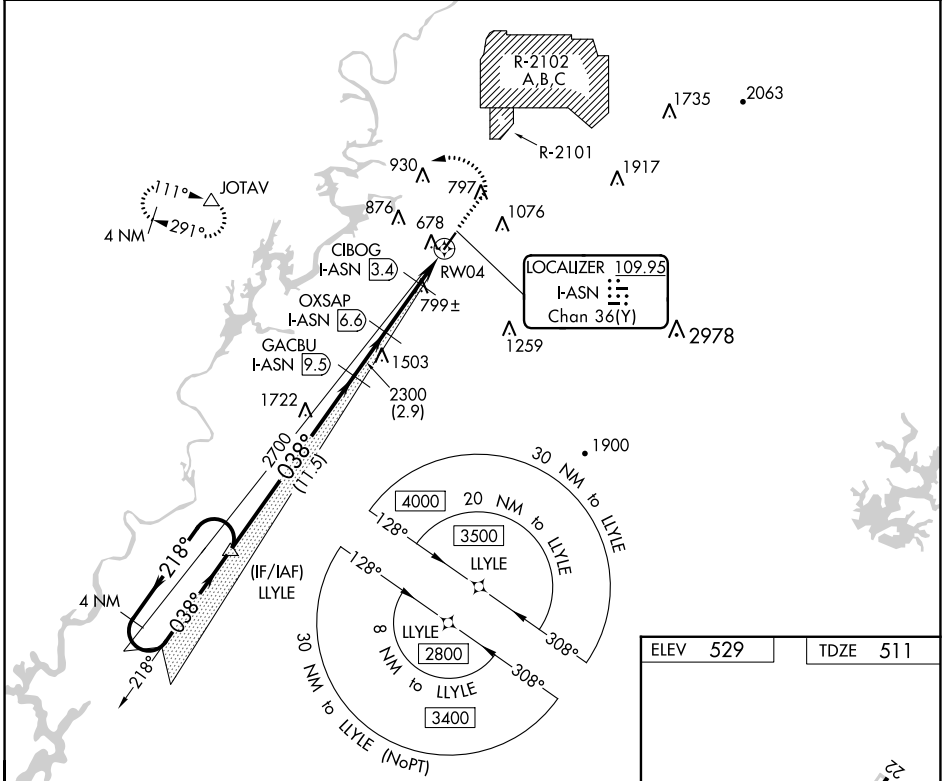


LOC/DME I-ASN 109.95 Chan 36(Y)	APP CRS 038°	Rwy Idg 6032 TDZE 511 Apt Elev 529
--	------------------------	---

ILS Y or LOC Y RWY 4

TALLADEGA MUNI (ASN)

<p>⚠️ NA</p> <p>RNAV 1-GPS required. VDP NA with Anniston altimeter setting. When local altimeter setting not received, use Anniston altimeter setting and increase DA to 746 feet and all MDA 40 feet; increase S-LOC 4 Cats C and D visibility 1/8 SM and Circling Cat C visibility 1/4 SM.</p>	<p>MISSED APPROACH: Climb to 1300 then climbing left turn to 3700 direct JOTAV and hold.</p>	
<p>AWOS-3PT 118.425</p>	<p>BIRMINGHAM APP CON 132.15 285.45</p>	<p>UNICOM 122.8 (CTAF) 0</p>



<p>4 NM Holding Pattern</p> <p>LLYLE</p> <p>2800 ← 218°</p> <p>GS 3.00° TCH 45</p>	<p>VGSI and ILS glidepath not coincident (VGSI Angle 3.00/TCH 65).</p> <p>1300 ↑</p> <p>3700 ↘</p> <p>JOTAV △</p> <p>*LOC only.</p>																				
<p>2700 → 038°</p> <p>2300</p> <p>*1280</p> <p>2300</p> <p>1.5 NM to RW04</p>	<p>GACBU I-ASN 9.5</p> <p>OXSAP I-ASN 6.6</p> <p>CIBOG I-ASN 3.4</p>																				
<p>11.5 NM</p> <p>2.9</p> <p>3.2 NM</p> <p>0.8</p> <p>1.5 NM</p>	<p>30 NM to LLYLE (NoPT)</p> <p>20 NM to LLYLE</p> <p>30 NM to LLYLE</p> <p>8 NM to LLYLE</p> <p>4000</p> <p>3500</p> <p>2800</p> <p>3400</p>																				
<table border="1"> <tr> <th>CATEGORY</th> <th>A</th> <th>B</th> <th>C</th> <th>D</th> </tr> <tr> <td>S-ILS 4</td> <td colspan="4">711-3/4 200 (200-3/4)</td> </tr> <tr> <td>S-LOC 4</td> <td>1060-1</td> <td>549 (600-1)</td> <td>1060-1 3/8</td> <td>549 (600-1 1/8)</td> </tr> <tr> <td>CIRCLING</td> <td>1140-1 611 (700-1)</td> <td>1180-1 651 (700-1)</td> <td>1380-2 1/2 851 (900-2 1/2)</td> <td>1500-3 971 (1000-3)</td> </tr> </table>	CATEGORY	A	B	C	D	S-ILS 4	711-3/4 200 (200-3/4)				S-LOC 4	1060-1	549 (600-1)	1060-1 3/8	549 (600-1 1/8)	CIRCLING	1140-1 611 (700-1)	1180-1 651 (700-1)	1380-2 1/2 851 (900-2 1/2)	1500-3 971 (1000-3)	<p>ELEV 529</p> <p>TDZE 511</p>
CATEGORY	A	B	C	D																	
S-ILS 4	711-3/4 200 (200-3/4)																				
S-LOC 4	1060-1	549 (600-1)	1060-1 3/8	549 (600-1 1/8)																	
CIRCLING	1140-1 611 (700-1)	1180-1 651 (700-1)	1380-2 1/2 851 (900-2 1/2)	1500-3 971 (1000-3)																	

SE-4, 26 DEC 2024 to 23 JAN 2025

SE-4, 26 DEC 2024 to 23 JAN 2025

REIL Rwy 4 0
HIRL Rwy 4-22 0