

WAAS CH <b>93720</b> <b>W22A</b>	APP CRS <b>218°</b>	Rwy Idg TDZE Apt Elev	<b>6032</b> <b>529</b> <b>529</b>
--	------------------------	-----------------------------	---

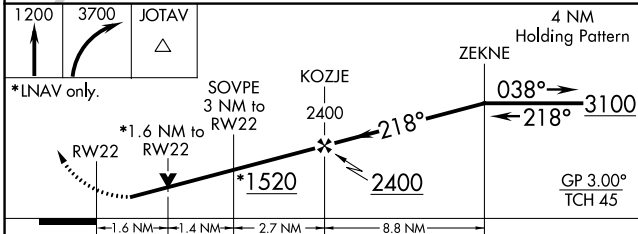
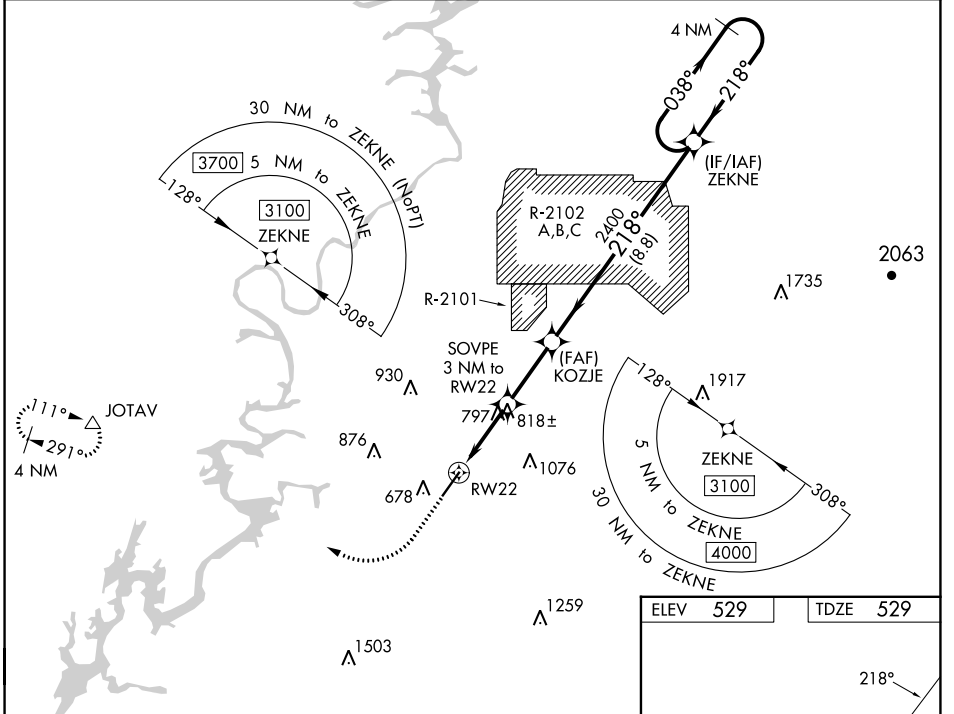
# RNAV (GPS) RWY 22

TALLADEGA MUNI (ASN)

**▼** Baro-VNAV NA when using Anniston altimeter setting. For uncompensated Baro-VNAV systems, LNAV/VNAV NA below -16°C (4°F) or above 54°C (130°F). DME/DME RNP-0.3 NA. VDP NA with Anniston altimeter setting. When local altimeter setting not received, use Anniston altimeter setting and increase LPV DA to 856, LNAV/VNAV DA to 1075, and all MDA 40 feet; increase LPV and LNAV/VNAV all Cats visibility and LNAV Cats C/D visibility 1/8 mile. Increase Circling Cat C visibility 1/4 SM. Rwy 22 Helicopter visibility reduction below 3/4 SM NA.

**▲ NA** MISSED APPROACH: Climb to 1200 then climbing right turn to 3700 direct JOTAV and hold, continue climb in hold to 3700.

AWOS-3PT <b>118.425</b>	BIRMINGHAM APP CON <b>132.15 285.45</b>	UNICOM <b>122.8 (CTAF) 0</b>
----------------------------	--	---------------------------------



CATEGORY	A	B	C	D
LPV DA		821-1	292 (300-1)	
LNAV/VNAV DA		1040-1¾	511 (600-1¾)	
LNAV MDA	1080-1	551 (600-1)	1080-1½	551 (600-1½)
<b>C</b> CIRCLING	1140-1 611 (700-1)	1180-1 651 (700-1)	1380-2½ 851 (900-2½)	1500-3 971 (1000-3)

ELEV 529	TDZE 529
----------	----------

REIL Rwy 4 **0**  
HIRL Rwy 4-22 **0**

SE-4, 26 DEC 2024 to 23 JAN 2025

SE-4, 26 DEC 2024 to 23 JAN 2025