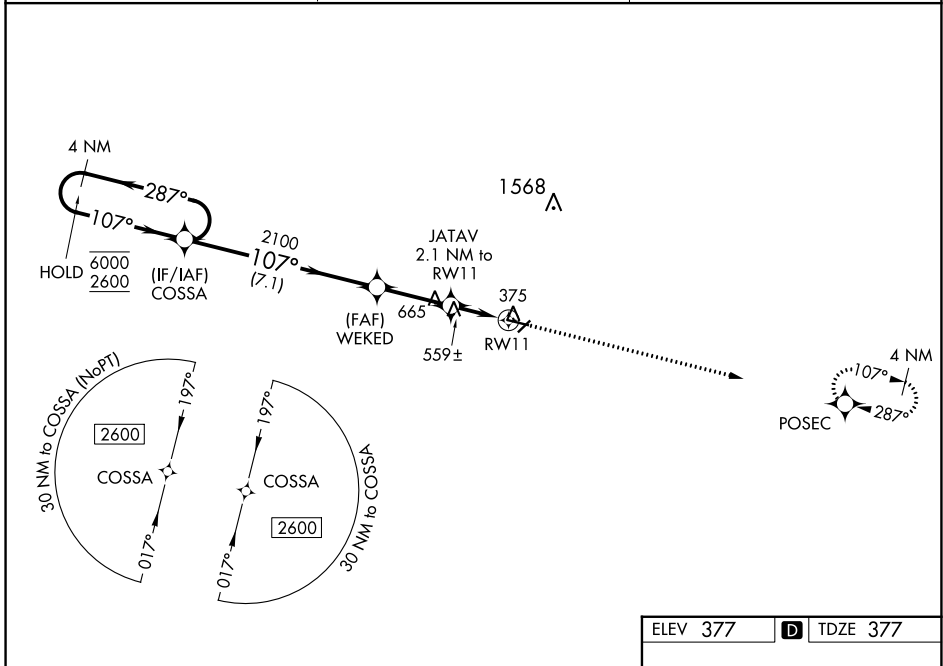


WAAS CH 82521 W11A	APP CRS 107°	Rwy Idg 4400 TDZE 377 Apt Elev 377
--	------------------------	---

RNAV (GPS) RWY 11

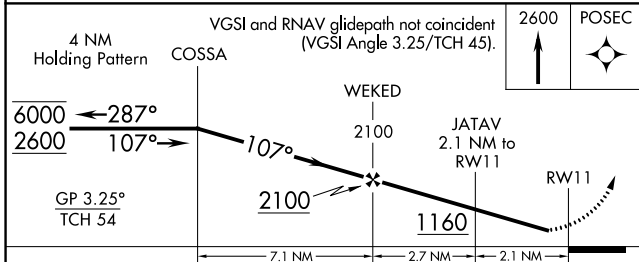
COCHRAN (48A)

RNP APCH - GPS.		MISSED APPROACH: Climb to 2600 direct POSEC and hold.
<p>▽ Rwy 11 helicopter visibility reduction below 1 SM NA. For uncompensated Baro-VNAV systems, LNAV/VNAV NA below -15°C or above 54°C. ▲ Straight-in Rwy 11 NA at night, Circling Rwy 5, 11 and 23 NA at night.</p>		
AWOS-3PT 120.975	ATLANTA APP CON * 124.2 279.6	UNICOM 122.8 (CTAF) 0

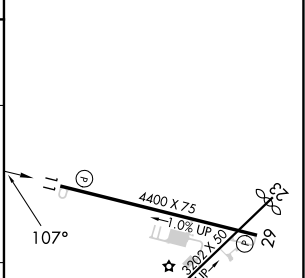


SE-4, 26 DEC 2024 to 23 JAN 2025

SE-4, 26 DEC 2024 to 23 JAN 2025



ELEV 377	D TDZE 377
----------	-------------------



CATEGORY	A	B	C	D
LPV DA	678-1 301 (400-1)			
LNAV/VNAV DA	690-1 313 (400-1)			
LNAV MDA	820-1 443 (500-1)	820-1 ³ / ₈ 443 (500-1 ³ / ₈)		
C CIRCLING	820-1 443 (500-1)	860-1 483 (500-1)	980-1 ³ / ₄ 603 (700-1 ³ / ₄)	980-2 603 (700-2)

MIRL Rwy 11-29 **0**