

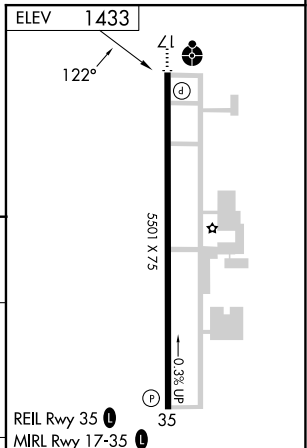
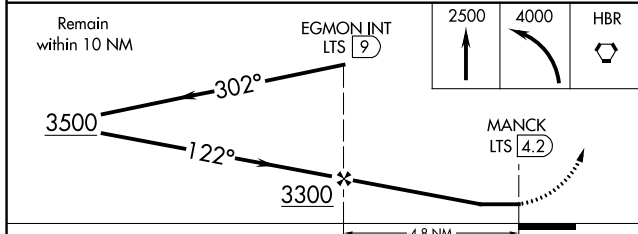
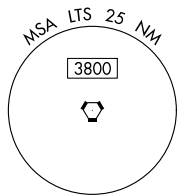
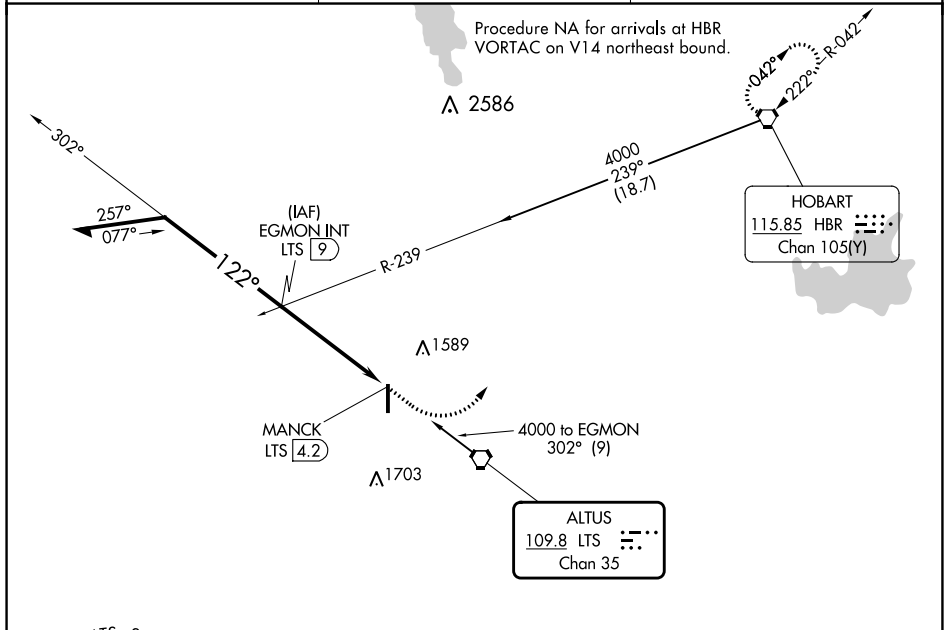
VORTAC LTS <b>109.8</b> Chan <b>35</b>	APP CRS <b>122°</b>	Rwy Idg N/A TDZE N/A Apt Elev <b>1433</b>
--	------------------------	--

**VOR-A**

ALTUS/QUARTZ MOUNTAIN RGNL (A.X.S)

<p><b>⚠</b> When local altimeter setting not received, use Hobart Rgnl altimeter setting and increase all MDA 80 feet. Increase Circling Cat C visibility ¼ mile.</p>	<p>MISSED APPROACH: Climb to 2500 then climbing left turn to 4000 direct HBR VORTAC and hold.</p>
---	---

AWOS-3PT <b>118.825</b>	ALTUS APP CON* <b>125.1 353.7</b>	UNICOM <b>122.8 (CTAF) 0</b>
----------------------------	--------------------------------------	---------------------------------



CATEGORY	A	B	C	D	FAF to MAP 4.8 NM					
<b>C</b> CIRCLING	1920-1	487 (500-1)	2020-1½ 587 (600-1½)	NA	Knots	60	90	120	150	180
					Min:Sec	4:48	3:12	2:24	1:55	1:36

**VOR-A**

SC-1, 26 DEC 2024 to 23 JAN 2025

SC-1, 26 DEC 2024 to 23 JAN 2025