

| | | |
|-------------|----------|-------------|
| APP CRS | Rwy Idg | 4002 |
| 021° | TDZE | 765 |
| | Apt Elev | 765 |

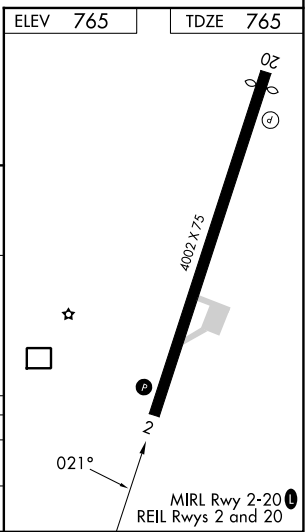
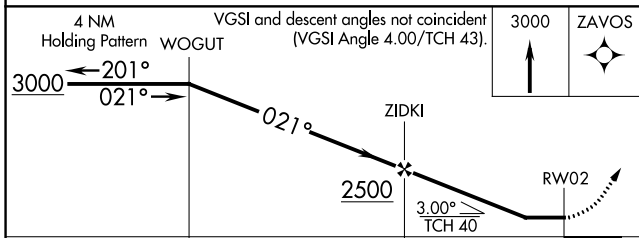
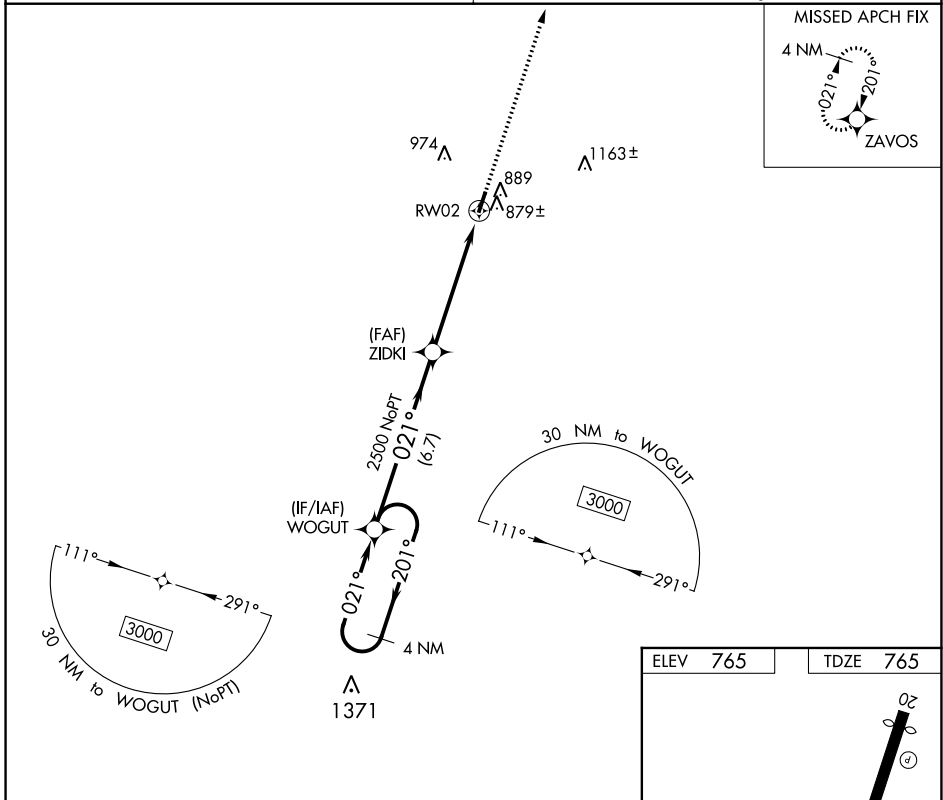
RNAV (GPS) RWY 2

CENTERVILLE MUNI (GHM)

⚠ NA Obtain local altimeter setting on CTAF, when not received, use Columbia/Mount Pleasant altimeter setting and increase all MDA 80 feet. Increase LNAV Cats C and D visibility $\frac{3}{8}$ mile and Circling Cat D $\frac{1}{4}$ mile. DME/DME RNP-0.3 NA. Procedure NA at night. Helicopter visibility reduction below 1 SM NA.

MISSED APPROACH: Climb to 3000 direct ZAVOS and hold.

MEMPHIS CENTER **125.85 379.25** UNICOM **122.8 (CTAF) 0**



| CATEGORY | A | B | C | D |
|-------------------|--------------------|-------------|-------------------------|-------------------------|
| LNAV MDA | 1140-1 375 (400-1) | | | |
| C CIRCLING | 1260-1 | 495 (500-1) | 1280-1½ 515 (600-1½) | 1520-2½ 755 (800-2½) |

SE-1, 26 DEC 2024 to 23 JAN 2025

SE-1, 26 DEC 2024 to 23 JAN 2025