

WAAS CH 82215 W28A	APP CRS 277°	Rwy Idg 4972 TDZE 1134 Apt Elev 1136
--	------------------------	---

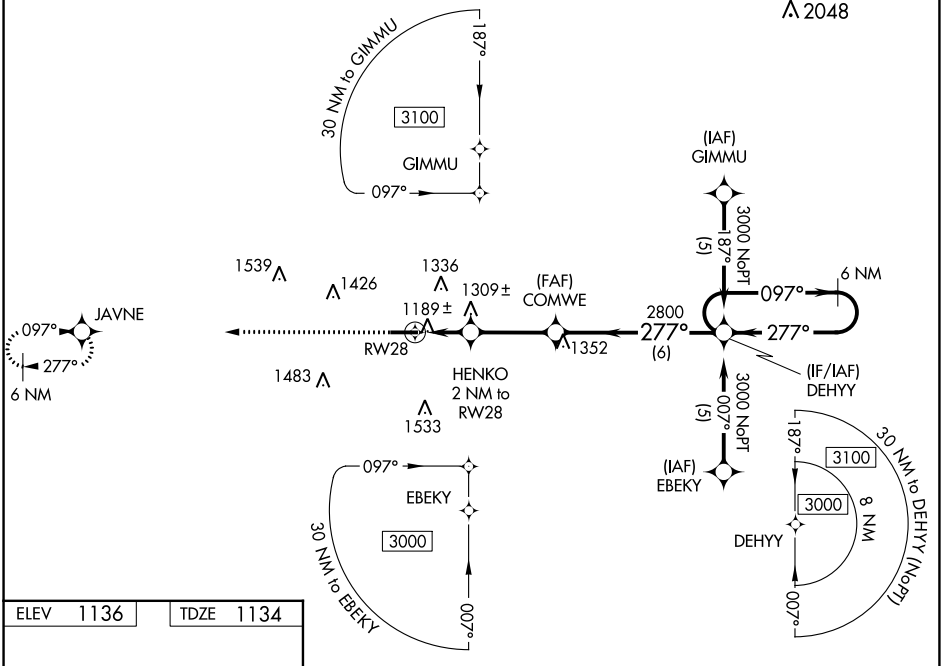
RNAV (GPS) RWY 28

WAYNE COUNTY (BJJ)

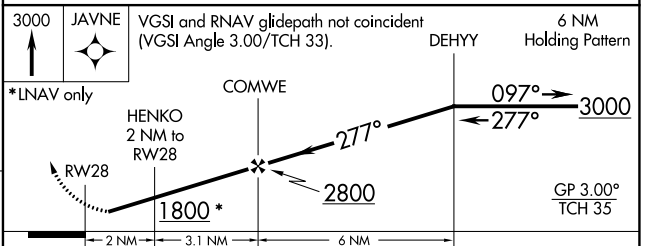
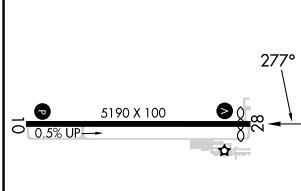
⚠ Baro-VNAV NA when using Akron-Canton Rgnl altimeter setting. For uncompensated Baro-VNAV systems, LNAV/VNAV NA below -17°C (2°F) or above 54°C (130°F). Helicopter visibility reduction below ¼ SM NA. When local altimeter setting not received, use Akron-Canton Rgnl altimeter setting: increase LPV DA to 1458 feet, LNAV/VNAV DA to 1649 feet, and visibility LPV all Cats ¼ SM and LNAV/VNAV all Cats ½ SM; increase all MDA 60 feet and visibility LNAV Cat C/D ½ SM and Circling Cat C/D ¼ SM.

MISSED APPROACH: Climb to 3000 direct JAVNE and hold.

ASOS 118.075	CLEVELAND APP CON * 125.5 371.875	CLNC DEL 121.75	UNICOM 122.975 (CTAF) ①
------------------------	---	---------------------------	-----------------------------------



ELEV 1136	TDZE 1134
-----------	-----------



CATEGORY	A	B	C	D
LPV DA	1398-1 264 (300-1)			
LNAV/ VNAV DA	1589-1½ 455 (500-1½)			
LNAV MDA	1560-1	426 (500-1)	1560-1¼	426 (500-1¼)
CIRCLING	1600-1 464 (500-1)	1700-1 564 (600-1)	1800-1¾ 664 (700-1¾)	1840-2¼ 704 (800-2¼)

REIL Rwy 10 and 28 ①
HIRL Rwy 10-28 ①

40°52'N-81°53'W

WAYNE COUNTY (BJJ)

RNAV (GPS) RWY 28

EC-2, 26 DEC 2024 to 23 JAN 2025

EC-2, 26 DEC 2024 to 23 JAN 2025