

VOR/DME BSV <b>114.05</b> Chan <b>87(Y)</b>	APP CRS <b>296°</b>	Rwy Idg <b>4972</b> TDZE <b>1134</b> Apt Elev <b>1136</b>
---	------------------------	---

# VOR RWY 28

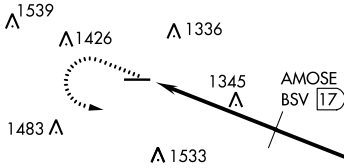
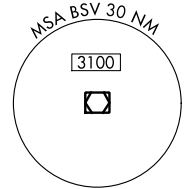
WAYNE COUNTY (BJJ)

**⚠** DME required. Helicopter visibility reduction below 3/4 SM NA.  
**⚠** When local altimeter setting not received, use Akron-Canton Rgnl altimeter setting and increase all MDA 60 feet and visibility Circling Cat C/D 1/4 SM.

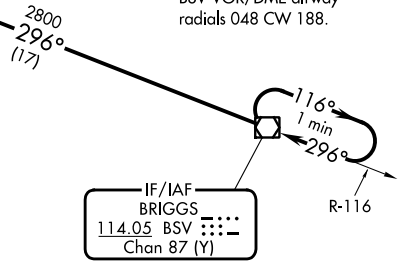
MISSED APPROACH: Climb to 2800 then left turn direct BSV VOR/DME and hold.

ASOS <b>118.075</b>	CLEVELAND APP CON * <b>125.5 371.875</b>	CLNC DEL <b>121.75</b>	UNICOM <b>122.975 (CTAF) 0</b>
------------------------	---	---------------------------	-----------------------------------

## DME REQUIRED



NoPT for arrival on BSV VOR/DME airway radials 048 CW 188.

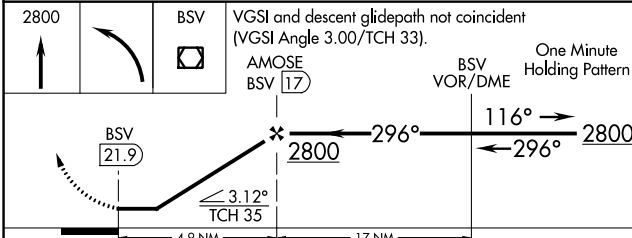


IF/IAF  
BRIGGS  
114.05 BSV  
Chan 87 (Y)

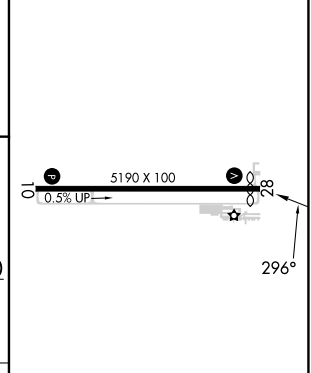
EC-2, 26 DEC 2024 to 23 JAN 2025

EC-2, 26 DEC 2024 to 23 JAN 2025

A 1696



ELEV 1136	TDZE 1134
-----------	-----------



CATEGORY	A	B	C	D
S-28	1660-1 526 (600-1)	1660-1 1/4 526 (600-1 1/4)	1660-1 1/2 526 (600-1 1/2)	1660-1 3/4 526 (600-1 3/4)
CIRCLING	1660-1 524 (600-1)	1700-1 1/4 564 (600-1 1/4)	1800-1 3/4 664 (700-1 3/4)	1840-2 1/4 704 (800-2 1/4)

REIL Rwy 10 and 28 0  
HIRL Rwy 10-28 0

FAF to MAP 4.9 NM

Knots	60	90	120	150	180
Min:Sec	4:54	3:16	2:27	1:58	1:38